



Connells

Hayle Road
Maidstone



Property Description

A well presented, spacious three-bedroom semi-detached family home in a desirable location on Hayle Road. Offering a comfortable blend of period charm and everyday practicality. Inside the home offers an entrance hall, front lounge with a bay window. A separate dining room and kitchen, as well as an additional sitting room that leads to the conservatory.

From the entrance hall, there are stairs leading to a cellar.

The first floor benefits from having all three bedrooms on this floor, a family bathroom as well as a shower room.

To the rear is the spacious garden

The home is in a desirable location by being walking distance to town. Close to the local amenities and Maidstone's train stations.



Ground Floor

Entrance Porch

Entrance Hall

Lounge

Dining Room

Sitting Room

Kitchen

Conservatory

First Floor

Landing

Bedroom One

Bedroom Two

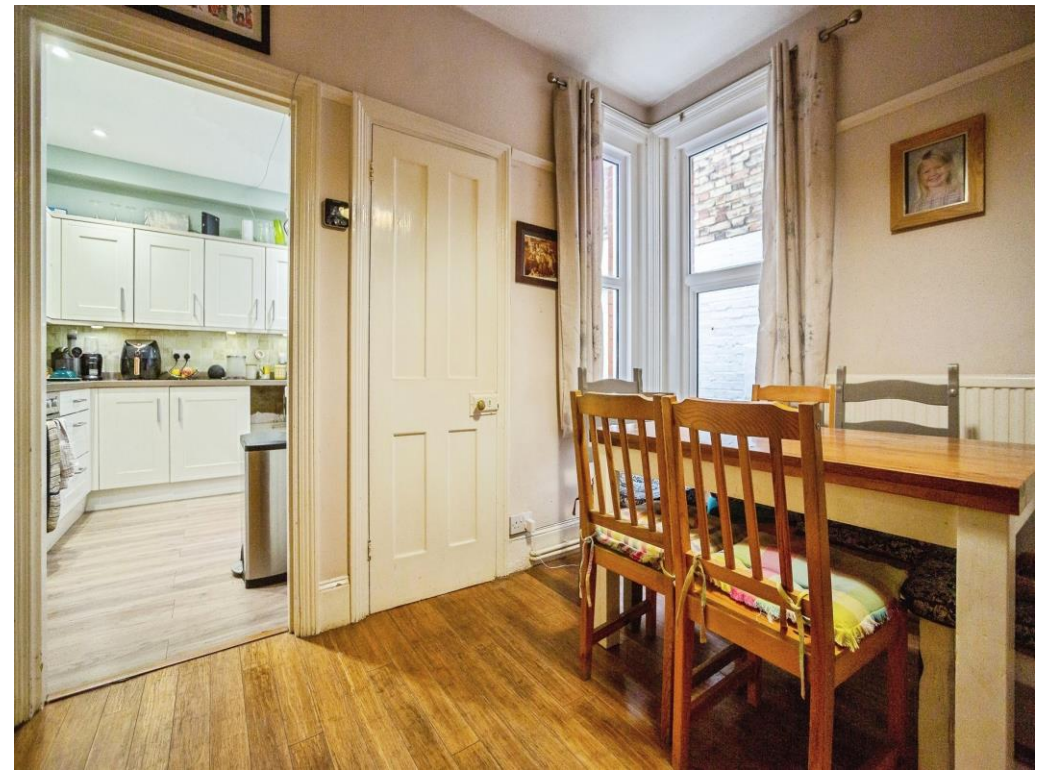
Bedroom Three

Bathroom

Basement

Cellar

Rear Garden









Total floor area 172.0 m² (1,852 sq.ft.) approx

This floor plan is for illustrative purposes only. It is not drawn to scale. Any measurements, floor areas (including any total floor area), openings and orientation are approximate. No details are guaranteed, they cannot be relied upon for any purpose and they do not form part of any agreement. No liability is taken for any error, omission or misstatement. A party must rely upon its own inspection(s). Powered by www.propertybox.io

Connells

To view this property please contact Connells on

T 01622 751034

E maidstone@connells.co.uk

30 King Street
MAIDSTONE ME14 1BS

EPC Rating: E Council Tax
Band: D

Tenure: Freehold

view this property online connells.co.uk/Property/MAI408333



1. MONEY LAUNDERING REGULATIONS Intending purchasers will be asked to produce identification documentation at a later stage and we would ask for your co-operation in order that there will be no delay in agreeing the sale. 2. These particulars do not constitute part or all of an offer or contract. 3. The measurements indicated are supplied for guidance only and as such must be considered incorrect. Potential buyers are advised to recheck measurements before committing to any expense. 4. We have not tested any apparatus, equipment, fixtures, fittings or services and it is in the buyers interest to check the working condition of any appliances.

Connells Residential is registered in England and Wales under company number 1489613, Registered Office is Cumbria House, 16-20 Hockliffe Street, Leighton Buzzard, Bedfordshire, LU7 1GN. VAT Registration Number is 500 2481 05.

See all our properties at www.connells.co.uk | www.rightmove.co.uk | www.zoopla.co.uk

Property Ref: MAI408333 - 0005