







### Property Description

This well-presented two bedroom property offers a perfect blend of comfort and convenience, ideal for first-time buyers, downsizers, or investors. This property benefits from a spacious living area leading through to the generously sized kitchen/diner, with access to the rear garden. This home comprises of two double bedrooms and family bathroom all on the same floor. With the added bonus of a driveway.

Situated in the sought-after Barming/Fant area, this home enjoys excellent connectivity and local amenities such as Maidstone train stations, Easy access to M20/M2 motorways. Close to popular local schools. Access to Maidstone town centre with shops, cafes, and restaurants



## Lounge

11' 11" Max x 11' 11" Into Recess ( 3.63m Max x 3.63m Into Recess )

## Kitchen

11' 11" Max x 11' 11" ( 3.63m Max x 3.63m )

## Landing

## Bedroom One

12' Max x 9' 1" Into Recess ( 3.66m Max x 2.77m Into Recess )

## Bedroom Two

12' 1" Max x 6' 5" Max ( 3.68m Max x 1.96m Max )

## Bathroom

## Agents Note

A public right of way exists, please contact the branch for further detail.



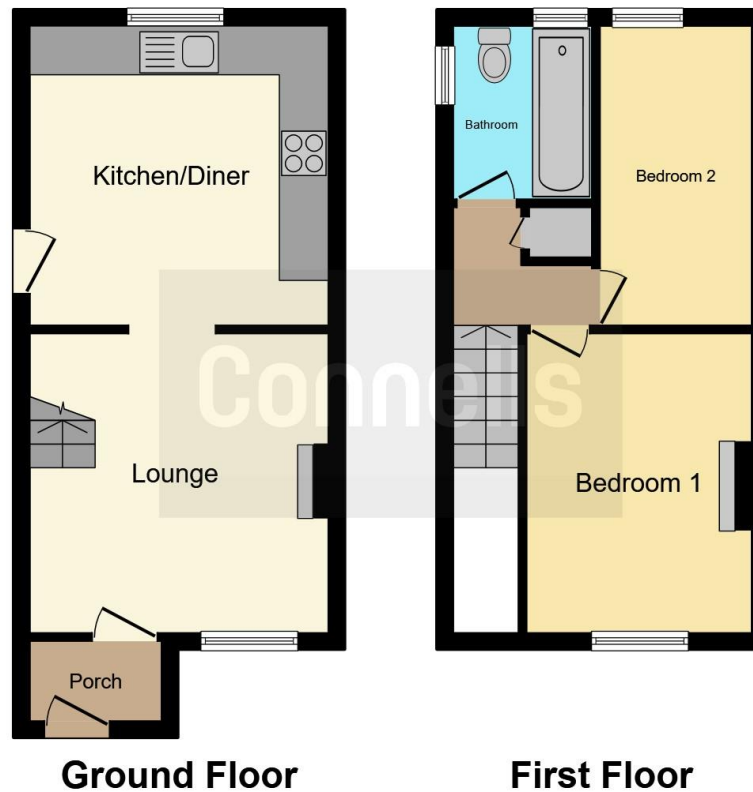












This floor plan is for illustrative purposes only. It is not drawn to scale. Any measurements, floor areas (including any total floor area), openings and orientation are approximate. No details are guaranteed, they cannot be relied upon for any purpose and they do not form part of any agreement. No liability is taken for any error, omission or misstatement. A party must rely upon its own inspection(s). Powered by [www.focalagent.com](http://www.focalagent.com)

To view this property please contact Connells on

**T 01622 751034**  
**E [maidstone@connells.co.uk](mailto:maidstone@connells.co.uk)**

30 King Street  
 MAIDSTONE ME14 1BS

EPC Rating: D Council Tax  
 Band: B

Tenure: Freehold

**view this property online** [connells.co.uk/Property/MAI407893](http://connells.co.uk/Property/MAI407893)



1. MONEY LAUNDERING REGULATIONS Intending purchasers will be asked to produce identification documentation at a later stage and we would ask for your co-operation in order that there will be no delay in agreeing the sale. 2. These particulars do not constitute part or all of an offer or contract. 3. The measurements indicated are supplied for guidance only and as such must be considered incorrect. Potential buyers are advised to recheck measurements before committing to any expense. 4. We have not tested any apparatus, equipment, fixtures, fittings or services and it is in the buyers interest to check the working condition of any appliances.

Connells Residential is registered in England and Wales under company number 1489613, Registered Office is Cumbria House, 16-20 Hockliffe Street, Leighton Buzzard, Bedfordshire, LU7 1GN. VAT Registration Number is 500 2481 05.

**See all our properties at [www.connells.co.uk](http://www.connells.co.uk) | [www.rightmove.co.uk](http://www.rightmove.co.uk) | [www.zoopla.co.uk](http://www.zoopla.co.uk)**

Property Ref: MAI407893 - 0002