



Connells

Hawthorne House Ashford Road
Harrietsham Maidstone



Property Description

A Substantial Family Residence in Harrietsham – Offering Privacy, Space & Potential

Discover the perfect setting for family life at this impressive, detached five-bedroom home in the desirable village of Harrietsham. Situated behind secure, gated access, this property offers a rare blend of privacy, generous accommodation, and a truly wonderful outdoor space.

Inside, you'll find a home designed for comfortable living. The interior boasts spacious rooms throughout, providing ample space for a growing family and relaxed entertaining. Imagine family gatherings in the generously sized living areas, and quiet evenings enjoying the peace and tranquility this home affords.

The real heart of this property lies in its expansive rear garden. Fully private, it's a delightful oasis – ideal for summer parties, children's play, or simply enjoying the outdoors. Picture barbecues with friends, children running freely, and creating lasting memories in your own private haven.

Practicality is also well catered for with a substantial double garage. Beyond simply housing vehicles, this versatile space presents exciting possibilities – perhaps a dedicated workshop for a hobbyist, a convenient home gym, or a creative studio. The choice is yours!

Conveniently located, the property enjoys easy access to both Harrietsham and the neighbouring village of Lenham, with their array of local amenities. Families will appreciate the proximity to well-regarded schools.

Entrance Hall

Lounge

19' 2" x 13' 6" Into Recess (5.84m x 4.11m Into Recess)

Dining Room

14' 10" x 10' 10" (4.52m x 3.30m)

Study

10' 2" x 9' 8" (3.10m x 2.95m)

Kitchen/ Breakfast Room

17' 5" x 10' 4" Max (5.31m x 3.15m Max)

Utility Room

13' 3" x 7' 7" (4.04m x 2.31m)

Cloakroom

Landing

Bedroom One

13' 11" x 11' 11" Into Recess (4.24m x 3.63m Into Recess)

En Suite

Bedroom Two

12' 5" Into Recess x 11' 3" (3.78m Into Recess x 3.43m)

Restricted head height.

Bedroom Three

14' 1" x 12' 4" Into Recess (4.29m x 3.76m Into Recess)

Bedroom Four

13' 3" x 8' 10" Into Recess (4.04m x 2.69m Into Recess)

Bedroom Five

18' 3" x 15' 11" Into Recess (5.56m x 4.85m Into Recess)

Bathroom

Shower Room

Front Garden

Rear Garden

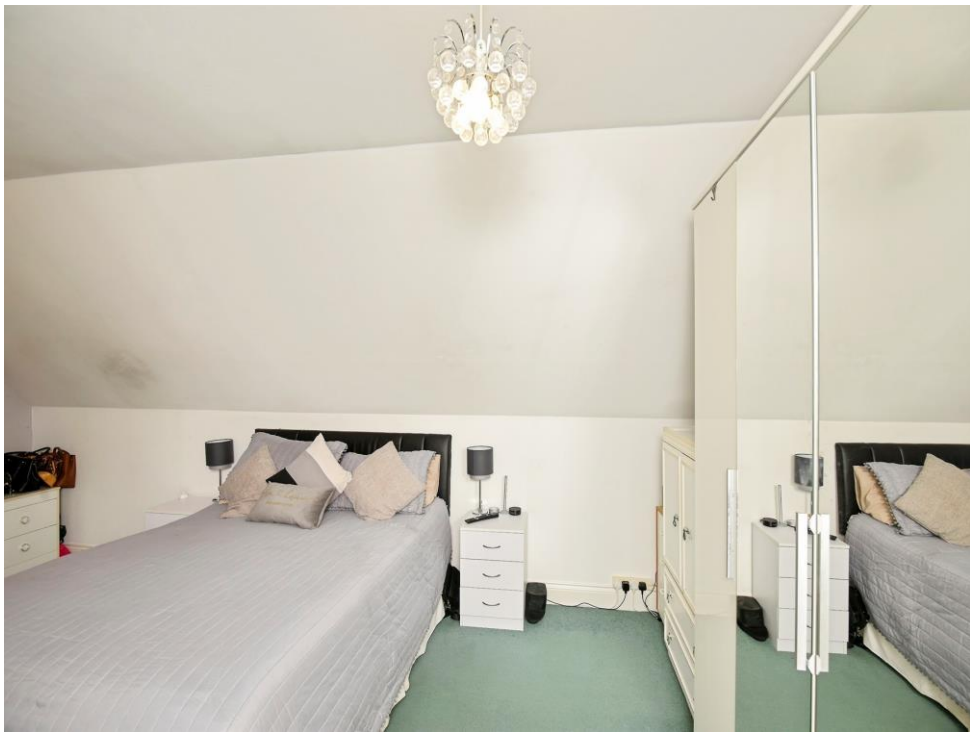
Double Garage

Driveway

Agents Note

A private right of way exists, please contact the branch for further details









This floor plan is for illustrative purposes only. It is not drawn to scale. Any measurements, floor areas (including any total floor area), openings and orientation are approximate. No details are guaranteed, they cannot be relied upon for any purpose and they do not form part of any agreement. No liability is taken for any error, omission or misstatement. A party must rely upon its own inspection(s). Powered by www.focalagent.com

To view this property please contact Connells on

T 01622 751034
E maidstone@connells.co.uk

30 King Street
 MAIDSTONE ME14 1BS

EPC Rating: C Council Tax
 Band: G

Tenure: Freehold

view this property online connells.co.uk/Property/MAI408001



1. MONEY LAUNDERING REGULATIONS Intending purchasers will be asked to produce identification documentation at a later stage and we would ask for your co-operation in order that there will be no delay in agreeing the sale. 2. These particulars do not constitute part or all of an offer or contract. 3. The measurements indicated are supplied for guidance only and as such must be considered incorrect. Potential buyers are advised to recheck measurements before committing to any expense. 4. We have not tested any apparatus, equipment, fixtures, fittings or services and it is in the buyers interest to check the working condition of any appliances.

Connells Residential is registered in England and Wales under company number 1489613, Registered Office is Cumbria House, 16-20 Hockliffe Street, Leighton Buzzard, Bedfordshire, LU7 1GN. VAT Registration Number is 500 2481 05.

See all our properties at www.connells.co.uk | www.rightmove.co.uk | www.zoopla.co.uk

Property Ref: MAI408001 - 0004