



Connells

**Doddington Court
Maidstone**



Property Description

A spacious and exceptionally well presented two double bedroom semi detached property situated in a sought after location close to Maidstone town centre. The property features two double bedrooms, a modern family bathroom, spacious lounge and a modern kitchen/diner. There is a driveway providing off road parking facilities for two vehicles and a pleasant garden to the rear. The property is well placed for all local amenities and internal viewing is highly recommended.

Maidstone is the largest town in Kent and lies 32 miles south east of London, trains run directly into London taking no longer than an hour on the fast train. The popular Bluewater shopping centre is only 20 miles away however if you like a day out to the coast, Whitstable is only 28 miles away.

The town centre boasts two main shopping centres, The Mall and Fremlin Walk, with a mixture of the high streets favourite stores plus some unique stores too. It has a vast selection of restaurants and bars and offers vibrant nightlife.

Maidstone is a fantastic location to reach all attractions Kent has to offer and is perfect for couples, families and groups of friends with a real mixture of different things to do varying for exploring castles, enjoying fresh local food, special events, sport activities, beautiful countryside walks and numerous villages.



Lounge

18' 6" Max x 11' 11" Max (5.64m Max x 3.63m Max)

Kitchen/Diner

11' 11" Max x 8' 1" Max (3.63m Max x 2.46m Max)

Landing

Bedroom One

11' 11" Max x 10' 7" Max (3.63m Max x 3.23m Max)

Bedroom Two

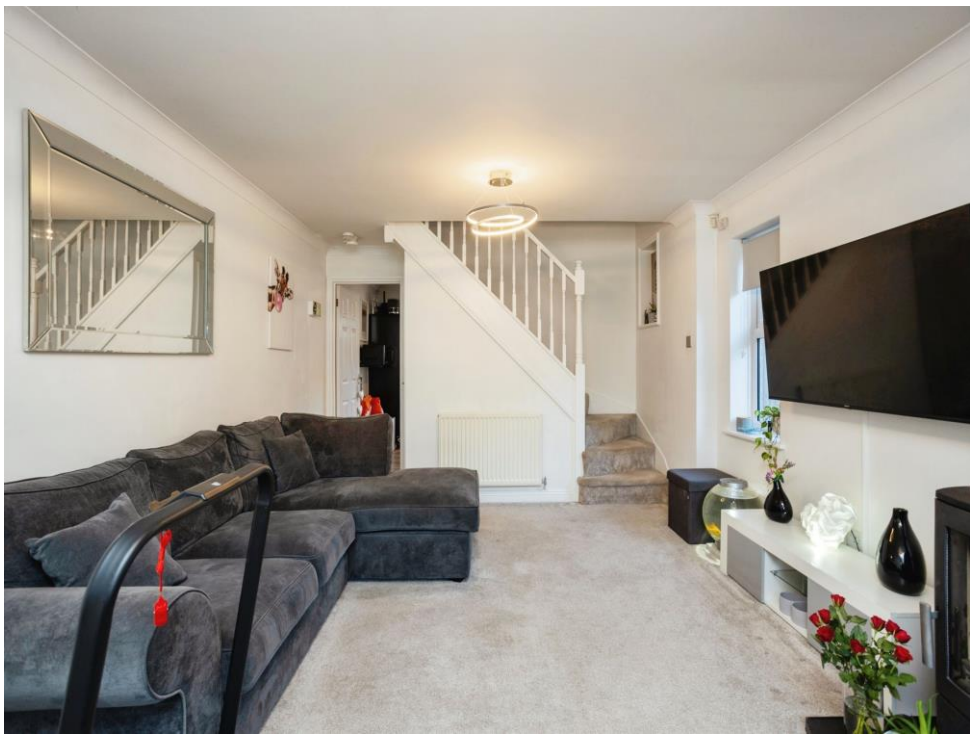
11' 11" Max x 8' 2" Max (3.63m Max x 2.49m Max)

Bathroom

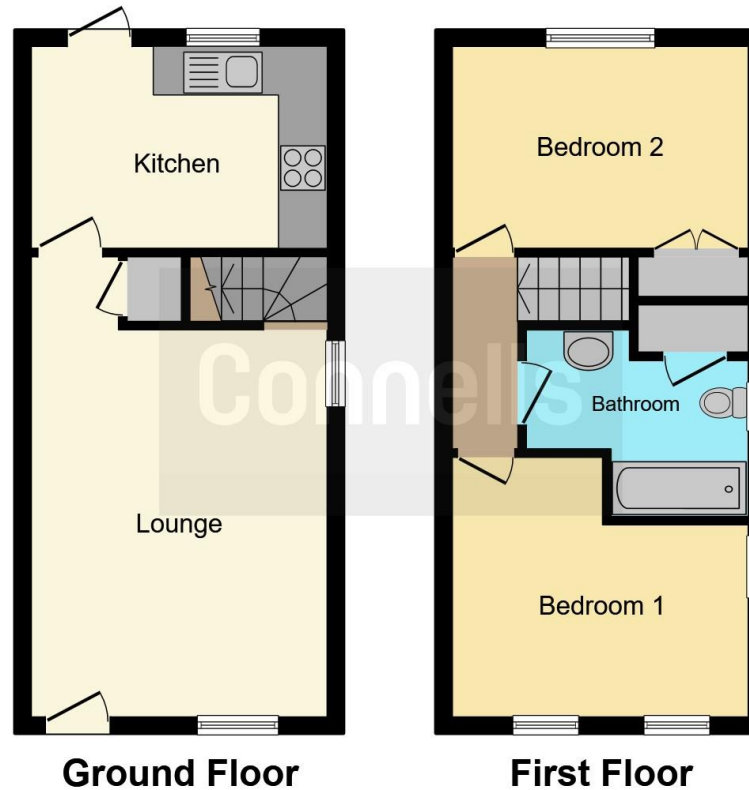
Driveway

Rear Garden









This floor plan is for illustrative purposes only. It is not drawn to scale. Any measurements, floor areas (including any total floor area), openings and orientation are approximate. No details are guaranteed, they cannot be relied upon for any purpose and they do not form part of any agreement. No liability is taken for any error, omission or misstatement. A party must rely upon its own inspection(s). Powered by www.focalagent.com

To view this property please contact Connells on

T 01622 751034
E maidstone@connells.co.uk

30 King Street
 MAIDSTONE ME14 1BS

EPC Rating: C Council Tax
 Band: C

Tenure: Freehold

view this property online connells.co.uk/Property/MAI407934



1. MONEY LAUNDERING REGULATIONS Intending purchasers will be asked to produce identification documentation at a later stage and we would ask for your co-operation in order that there will be no delay in agreeing the sale. 2. These particulars do not constitute part or all of an offer or contract. 3. The measurements indicated are supplied for guidance only and as such must be considered incorrect. Potential buyers are advised to recheck measurements before committing to any expense. 4. We have not tested any apparatus, equipment, fixtures, fittings or services and it is in the buyers interest to check the working condition of any appliances.

Connells Residential is registered in England and Wales under company number 1489613, Registered Office is Cumbria House, 16-20 Hockliffe Street, Leighton Buzzard, Bedfordshire, LU7 1GN. VAT Registration Number is 500 2481 05.

See all our properties at www.connells.co.uk | www.rightmove.co.uk | www.zoopla.co.uk

Property Ref: MAI407934 - 0002