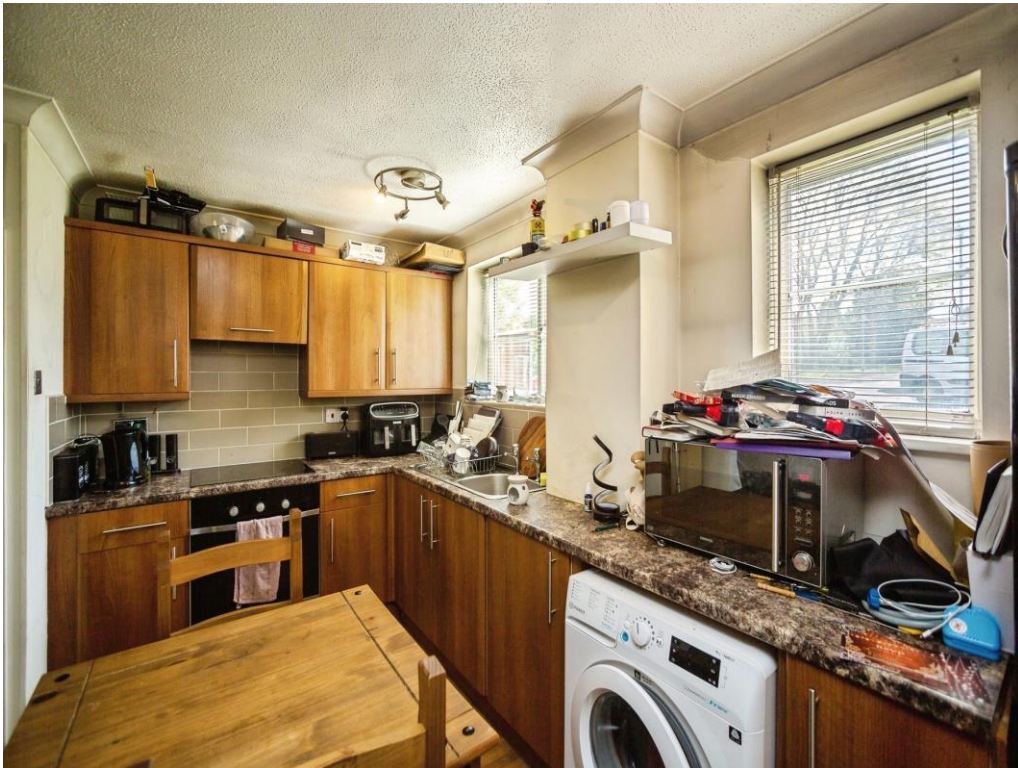




Connells

Mayfair Avenue
Maidstone



Property Description

This modern one bedroom house comes with a detached garden and garage en bloc and is located in the popular area of Loose on the outskirts of Maidstone town centre. The property consists of: Open plan living room with modern fitted kitchen, double bedroom and modern bathroom with shower over bath. The kitchen includes an electric oven and hob, space for a washing machine and space for a fridge freezer. The double bedroom is carpeted and comes complete with fitted wardrobes. The house offers plenty of storage throughout and benefits from gas central heating and double glazing.

Maidstone is the largest town in Kent and lies 32 miles south east of London, trains run directly into London taking no longer than an hour on the fast train. The popular Bluewater shopping centre is only 20 miles away however if you like a day out to the coast, Whitstable is only 28 miles away.

The town centre boasts two main shopping centres, The Mall and Fremlin Walk, with a mixture of the high streets favourite stores plus some unique stores too. It has a vast selection of restaurants and bars and offers vibrant nightlife.

Maidstone is a fantastic location to reach all attractions Kent has to offer and is perfect for couples, families and groups of friends with a real mixture of different things to do varying for exploring castles, enjoying fresh local food, special events, sport activities, beautiful countryside walks and numerous villages.



Lounge/Dining/Kitchen

17' Max x 13' 10" Max (5.18m Max x 4.22m Max)

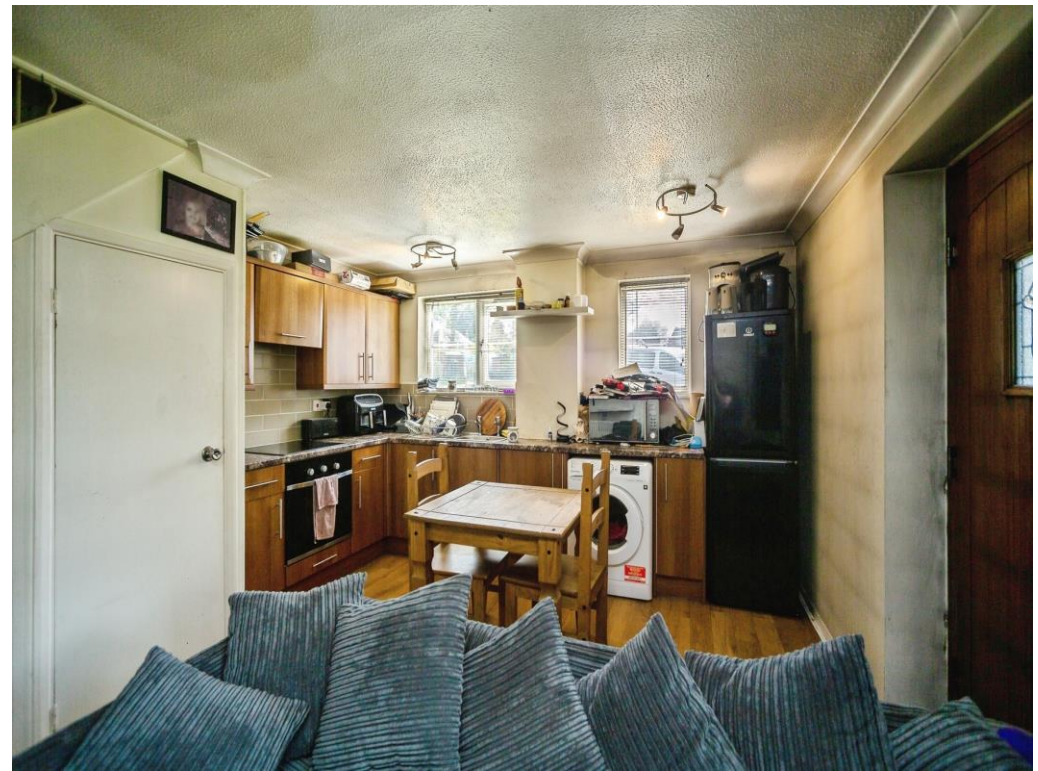
Bedroom

10' Max x 9' 3" Max (3.05m Max x 2.82m Max)

Bathroom

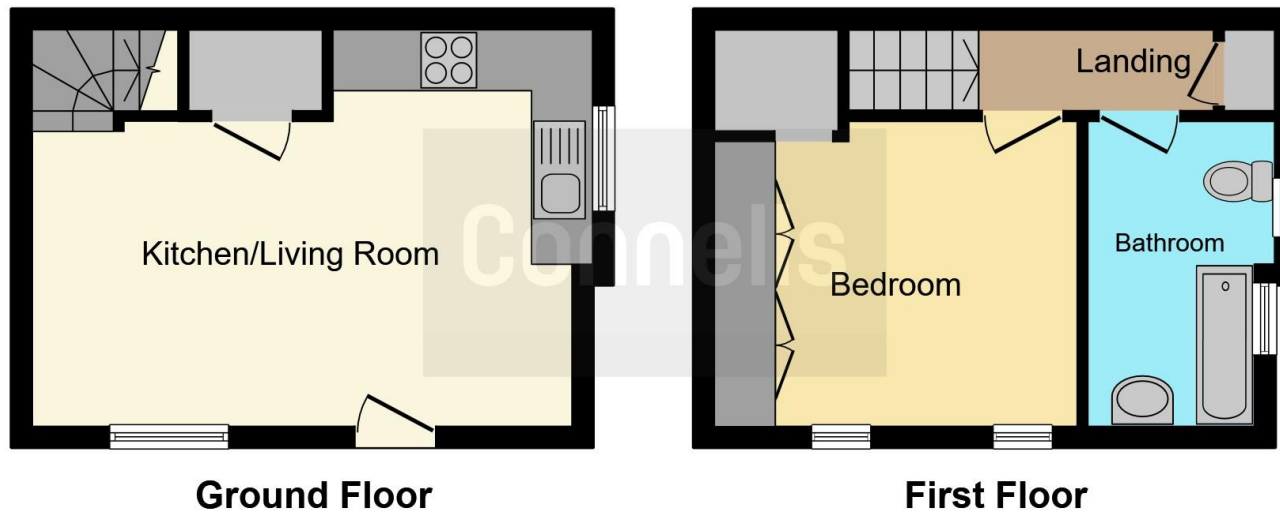
Garage En Bloc

Detached Garden









This floor plan is for illustrative purposes only. It is not drawn to scale. Any measurements, floor areas (including any total floor area), openings and orientation are approximate. No details are guaranteed, they cannot be relied upon for any purpose and they do not form part of any agreement. No liability is taken for any error, omission or misstatement. A party must rely upon its own inspection(s). Powered by www.focalagent.com

To view this property please contact Connells on

T 01622 751034
E maidstone@connells.co.uk

30 King Street
 MAIDSTONE ME14 1BS

EPC Rating: C

Tenure: Freehold

view this property online connells.co.uk/Property/MAI407801



1. MONEY LAUNDERING REGULATIONS Intending purchasers will be asked to produce identification documentation at a later stage and we would ask for your co-operation in order that there will be no delay in agreeing the sale. 2. These particulars do not constitute part or all of an offer or contract. 3. The measurements indicated are supplied for guidance only and as such must be considered incorrect. Potential buyers are advised to recheck measurements before committing to any expense. 4. We have not tested any apparatus, equipment, fixtures, fittings or services and it is in the buyers interest to check the working condition of any appliances.

Connells Residential is registered in England and Wales under company number 1489613, Registered Office is Cumbria House, 16-20 Hockliffe Street, Leighton Buzzard, Bedfordshire, LU7 1GN. VAT Registration Number is 500 2481 05.

See all our properties at www.connells.co.uk | www.rightmove.co.uk | www.zoopla.co.uk

Property Ref: MAI407801 - 0002