



Connells

Cambridge Crescent
Maidstone



Property Description

This two bedroom semi-detached home is located in a sought after location and offered to the market without a chain. The property is very spacious internally with an open plan kitchen/dining room, as well as a separate living room.

On the first floor you have two double bedrooms plus a bathroom. This home also includes benefits from a low maintenance rear garden as well as a driveway.

Maidstone is the largest town in Kent and lies 32 miles south east of London, trains run directly into London taking no longer than an hour on the fast train. The popular Bluewater shopping centre is only 20 miles away however if you like a day out to the coast, Whitstable is only 28 miles away.

The town centre boasts two main shopping centres, The Mall and Fremlin Walk, with a mixture of the high streets favourite stores plus some unique stores too. It has a vast selection of restaurants and bars and offers vibrant nightlife.

Maidstone is a fantastic location to reach all attractions Kent has to offer and is perfect for couples, families and groups of friends with a real mixture of different things to do varying for exploring castles, enjoying fresh local food, special events, sport activities, beautiful countryside walks and numerous villages.

Ground Floor

Entrance Hall

Lounge

14' 11" Max x 10' 8" Max (4.55m Max x 3.25m Max)

Kitchen

18' 2" Max x 8' 10" Max (5.54m Max x 2.69m Max)

Landing

Bedroom One

14' 11" Max x 9' 8" Max (4.55m Max x 2.95m Max)

Bedroom Two

10' 10" Max x 10' 3" Max (3.30m Max x 3.12m Max)

Bathroom

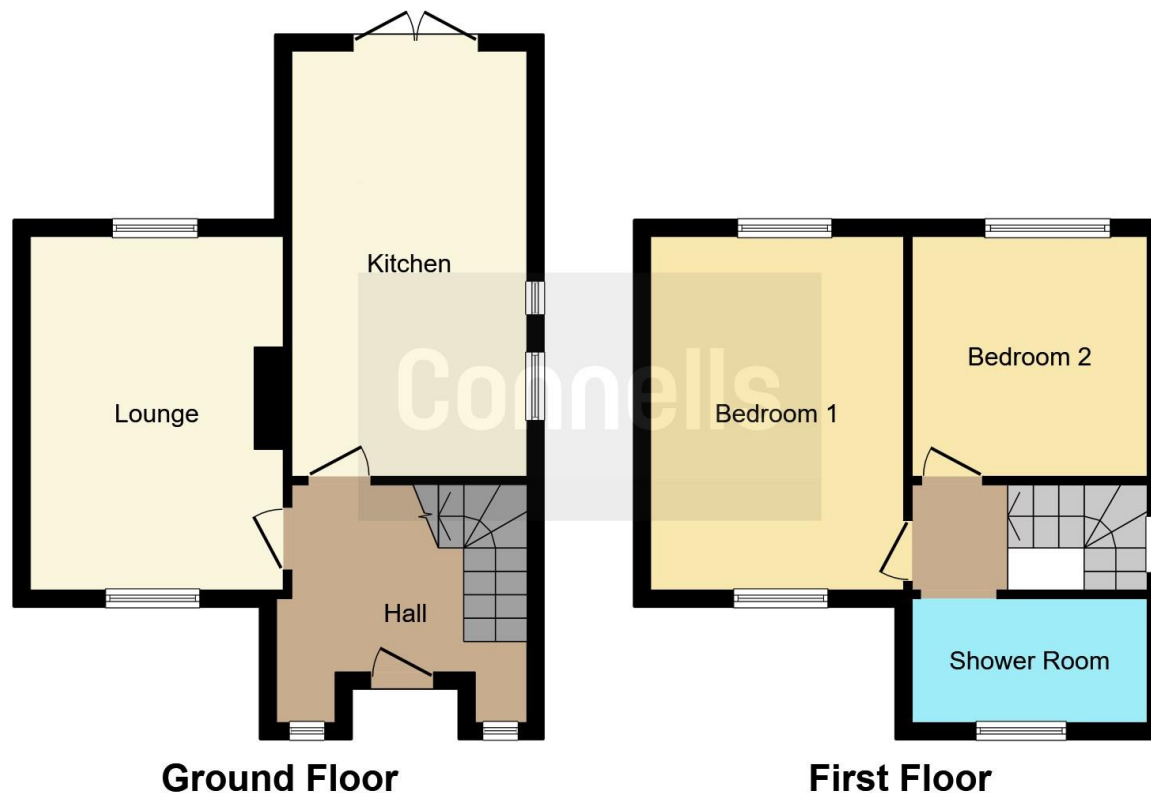
Driveway

Rear Garden









This floor plan is for illustrative purposes only. It is not drawn to scale. Any measurements, floor areas (including any total floor area), openings and orientation are approximate. No details are guaranteed, they cannot be relied upon for any purpose and they do not form part of any agreement. No liability is taken for any error, omission or misstatement. A party must rely upon its own inspection(s). Powered by www.focalagent.com

To view this property please contact Connells on

T 01622 751034
E maidstone@connells.co.uk

30 King Street
 MAIDSTONE ME14 1BS

EPC Rating: C

view this property online connells.co.uk/Property/MAI407823

Tenure: Freehold



1. MONEY LAUNDERING REGULATIONS Intending purchasers will be asked to produce identification documentation at a later stage and we would ask for your co-operation in order that there will be no delay in agreeing the sale. 2. These particulars do not constitute part or all of an offer or contract. 3. The measurements indicated are supplied for guidance only and as such must be considered incorrect. Potential buyers are advised to recheck measurements before committing to any expense. 4. We have not tested any apparatus, equipment, fixtures, fittings or services and it is in the buyers interest to check the working condition of any appliances.

Connells Residential is registered in England and Wales under company number 1489613, Registered Office is Cumbria House, 16-20 Hockliffe Street, Leighton Buzzard, Bedfordshire, LU7 1GN. VAT Registration Number is 500 2481 05.

See all our properties at www.connells.co.uk | www.rightmove.co.uk | www.zoopla.co.uk

Property Ref: MAI407823 - 0006