



Connells

Birkdale Court
Buckland Road Maidstone

Birkdale Court Buckland Road Maidstone ME16 0UH

for sale
£160,000



Property Description

A beautifully presented two bedroom apartment in a small development within walking distance of the county town. This immaculate property further comprises of entrance hall, large reception room, separate modern kitchen and bathroom. You really can leave your car at home, as everything great about the area is on your doorstep.

Maidstone is a heritage town with surrounding villages in the heart of the Kent Countryside. Leeds Castle, Kent Event Centre, The Hop Farm, Mote Park and Brands Hatch hold major events throughout the year. Maidstone holds a vibrant nightlife with a good selection of restaurants, bars, nightclubs, 3 shopping centres, selection of shops, music events, multiplex cinema with a bowling alley, Saturday market, charity runs, sporting events and football stadium. It has three stations - Maidstone East, Maidstone West and Maidstone Barracks. The Maidstone East line runs between Ashford and London Victoria, Maidstone West offers services to London St Pancras via Gravesend/Strood as well as Paddock Wood.

Call Connells now to arrange your viewing.



Entrance Hall

Lounge

19' 5" x 10' 10" (5.92m x 3.30m)

Kitchen

9' 9" x 7' 6" (2.97m x 2.29m)

Bedroom One

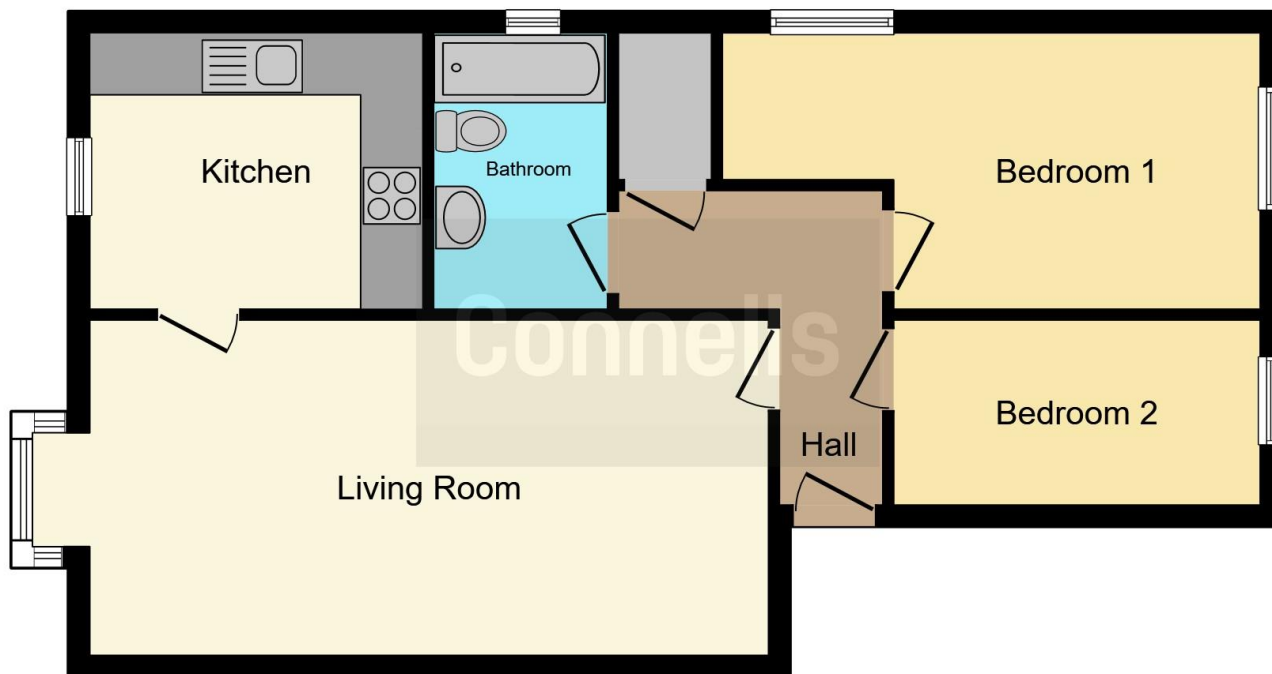
15' 10" x 9' 4" (4.83m x 2.84m)

Bedroom Two

11' x 5' 10" (3.35m x 1.78m)

Bathroom





This floor plan is for illustrative purposes only. It is not drawn to scale. Any measurements, floor areas (including any total floor area), openings and orientation are approximate. No details are guaranteed, they cannot be relied upon for any purpose and they do not form part of any agreement. No liability is taken for any error, omission or misstatement. A party must rely upon its own inspection(s). Powered by www.focalagent.com

To view this property please contact Connells on

T 01622 751034
E maidstone@connells.co.uk

30 King Street
 MAIDSTONE ME14 1BS

EPC Rating: D

view this property online connells.co.uk/Property/MAI407074

This is a Leasehold property with details as follows; Term of Lease 125 years from 29 Sep 1987. Should you require further information please contact the branch. Please Note additional fees could be incurred for items such as Leasehold packs.



Tenure: Leasehold



1. MONEY LAUNDERING REGULATIONS Intending purchasers will be asked to produce identification documentation at a later stage and we would ask for your co-operation in order that there will be no delay in agreeing the sale. 2. These particulars do not constitute part or all of an offer or contract. 3. The measurements indicated are supplied for guidance only and as such must be considered incorrect. Potential buyers are advised to recheck measurements before committing to any expense. 4. We have not tested any apparatus, equipment, fixtures, fittings or services and it is in the buyers interest to check the working condition of any appliances.

Connells Residential is registered in England and Wales under company number 1489613, Registered Office is Cumbria House, 16-20 Hockliffe Street, Leighton Buzzard, Bedfordshire, LU7 1GN. VAT Registration Number is 500 2481 05.

See all our properties at www.connells.co.uk | www.rightmove.co.uk | www.zoopla.co.uk

Property Ref: MAI407074 - 0003