



Connells

Bournewood Close
Downswood Maidstone

Bournewood Close Downswood Maidstone ME15 8TJ

for sale offers over
£450,000



Property Description

Been searching for that ideal property in the right location? Look no further!!

Impress your friends by inviting them in and showing them round this immaculate family home. The size of the hallway will instantly impress and the tasteful decor found throughout this home means you can put away your paint brushes and relax.

An ideal family home that boasts great accommodation and has those extra features, a downstairs cloakroom, fitted kitchen and bathrooms, all of which makes life just that bit more enjoyable.

An adjacent driveway and garage makes unloading those trips to the supermarket less of a chore and what better after a long day than to relax in a secluded and sunny back garden.

Maidstone is the largest town in Kent and lies 32 miles south east of London, trains run directly into London taking no longer than an hour on the fast train. The popular Bluewater shopping centre is only 20 miles away however if you like a day out to the coast, Whitstable is only 28 miles away.

The town centre boasts two main shopping centres, The Mall and Fremlin Walk, with a mixture of the high streets favourite stores plus some unique stores too. It has a vast selection of restaurants and bars and offers vibrant nightlife.

Maidstone is a fantastic location to reach all attractions Kent has to offer and is perfect for couples, families and groups of friends with a real mixture of different things to do varying for exploring castles, enjoying fresh local food, special events,

Entrance Hall

Cloakroom

Lounge

13' 11" Max x 10' 4" Max (4.24m Max x 3.15m Max)

Dining Room

13' 8" x 9' 2" (4.17m x 2.79m)

Kitchen

11' Max x 7' 6" Max (3.35m Max x 2.29m Max)

Landing

Bedroom One

12' 3" Max x 9' 8" Max (3.73m Max x 2.95m Max)

Bedroom Two

11' 8" Max x 10' 3" Max (3.56m Max x 3.12m Max)

Bedroom Three

9' 4" Max x 6' 10" Max (2.84m Max x 2.08m Max)

Bathroom

Front Garden

Rear Garden

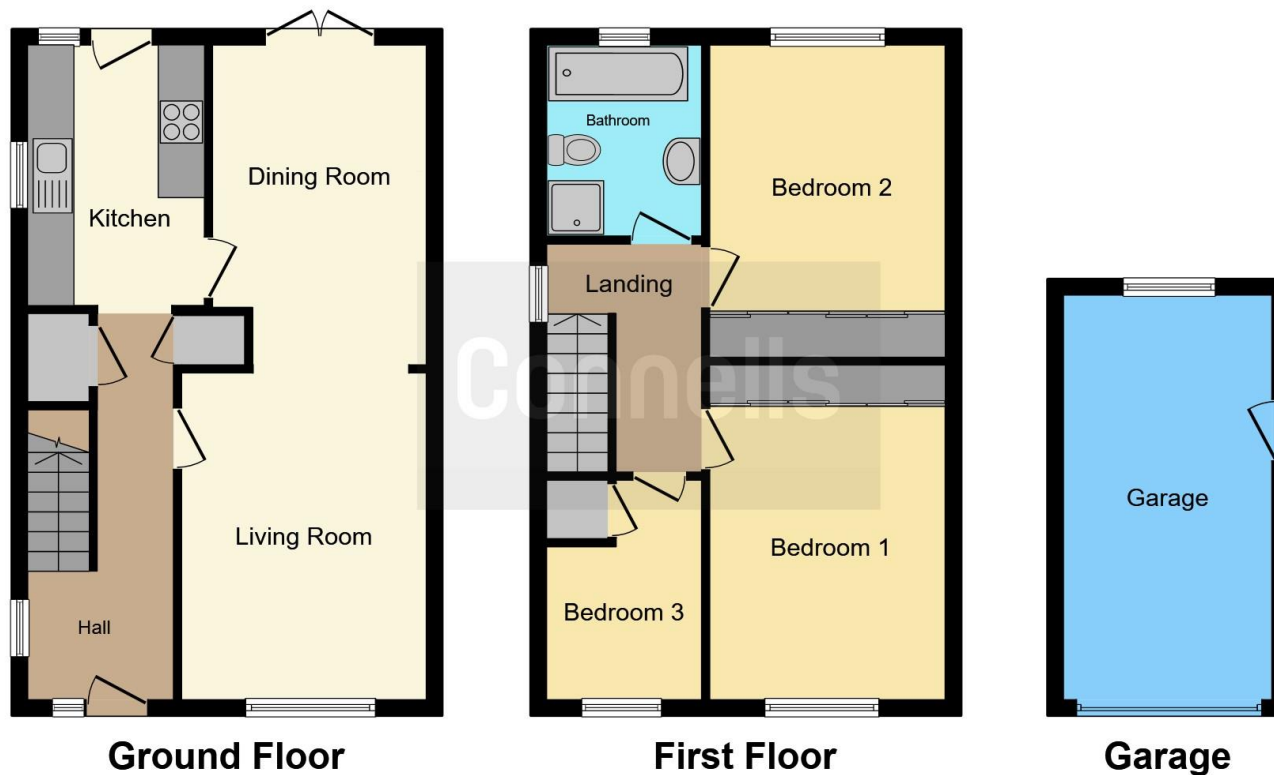
Double Drive

Garage









This floor plan is for illustrative purposes only. It is not drawn to scale. Any measurements, floor areas (including any total floor area), openings and orientation are approximate. No details are guaranteed, they cannot be relied upon for any purpose and they do not form part of any agreement. No liability is taken for any error, omission or misstatement. A party must rely upon its own inspection(s). Powered by www.focalagent.com

To view this property please contact Connells on

T 01622 751034
E maidstone@connells.co.uk

30 King Street
 MAIDSTONE ME14 1BS

EPC Rating: C

Tenure: Freehold

[check out more properties at connells.co.uk](http://connells.co.uk)



1. MONEY LAUNDERING REGULATIONS Intending purchasers will be asked to produce identification documentation at a later stage and we would ask for your co-operation in order that there will be no delay in agreeing the sale. 2. These particulars do not constitute part or all of an offer or contract. 3. The measurements indicated are supplied for guidance only and as such must be considered incorrect. Potential buyers are advised to recheck measurements before committing to any expense. 4. We have not tested any apparatus, equipment, fixtures, fittings or services and it is in the buyers interest to check the working condition of any appliances.

Connells Residential is registered in England and Wales under company number 1489613, Registered Office is Cumbria House, 16-20 Hockliffe Street, Leighton Buzzard, Bedfordshire, LU7 1GN. VAT Registration Number is 500 2481 05.

See all our properties at www.connells.co.uk | www.rightmove.co.uk | www.zoopla.co.uk

Property Ref: MAI407707 - 0008