



**Connells**

Weaving Street  
Weaving Maidstone



# Weaving Street Weaving Maidstone ME14 5JF

for sale  
**£425,000**



## Property Description

This Victorian end of terrace property benefits from 4 bedrooms. There is a large side extension, lounge, dining room and ground floor bathroom. The accommodation is split over 3 floors and the property is well presented. The windows are uPVC double glazed and the heating is gas central heating. There is off road parking to the front and a large south facing garden to the side. The garden is mainly laid to lawn with an attractive stone patio and flower borders.

Located in sought after Weaving Street. This property is ideally situated for Mote Park and other local amenities including, a Tesco supermarket, excellent schools and several public houses. Maidstone and Bearsted railway stations are in walking distance with a service to London and Ashford International. Maidstone Town Centre is a short walk with it's leisure facilities, restaurants and shops. There is good access to the M20 motorway.



Ground Floor

Lounge/Diner

25' 6" Max x 11' 10" Max ( 7.77m Max x 3.61m Max )

Kitchen

13' 6" Max x 10' 8" Max ( 4.11m Max x 3.25m Max )

Bathroom

First Floor

Landing

Bedroom One

11' 7" x 11' 5" ( 3.53m x 3.48m )

Bedroom Two

10' 11" x 10' 7" ( 3.33m x 3.23m )

Second Floor

Landing

Bedroom Three

10' 6" Max x 8' 1" Max ( 3.20m Max x 2.46m Max )

Restricted head height

Bedroom Four

10' 5" Max x 7' 5" Max ( 3.17m Max x 2.26m Max )

Restricted head height

Front

Rear Garden

Parking



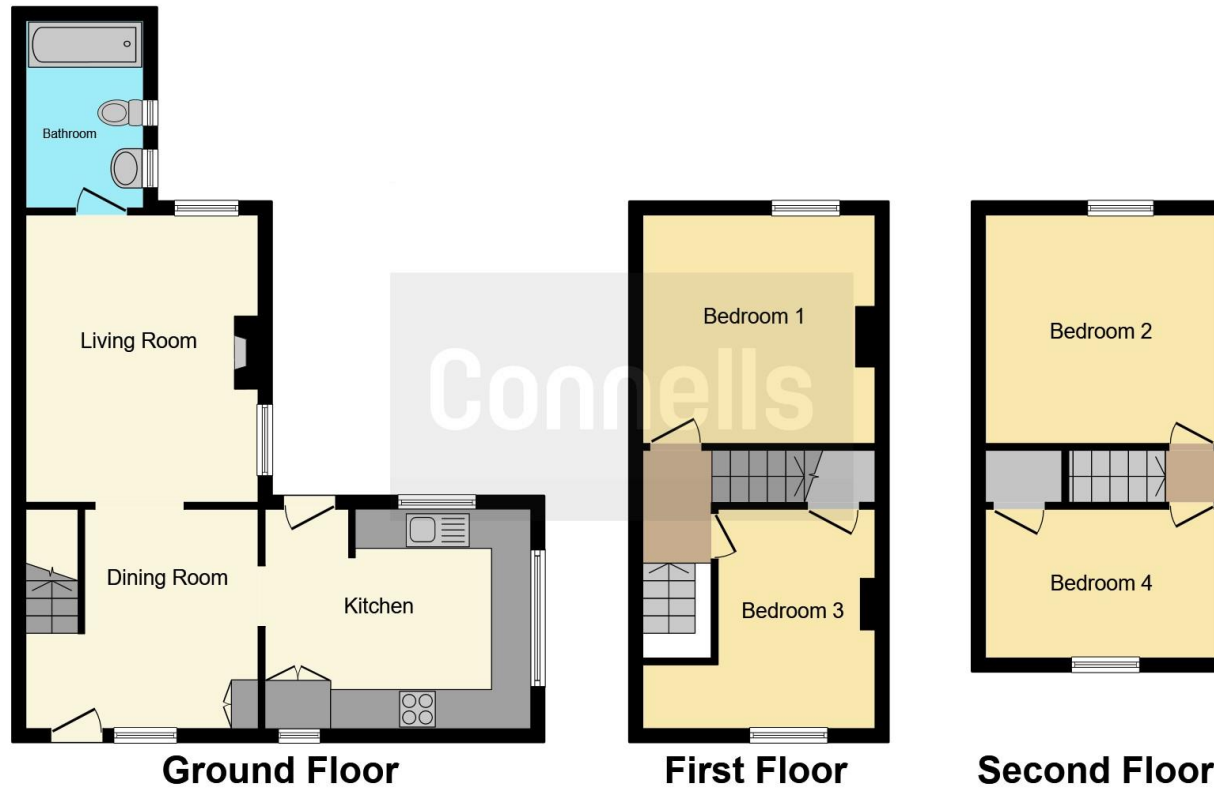












This floor plan is for illustrative purposes only. It is not drawn to scale. Any measurements, floor areas (including any total floor area), openings and orientation are approximate. No details are guaranteed, they cannot be relied upon for any purpose and they do not form part of any agreement. No liability is taken for any error, omission or misstatement. A party must rely upon its own inspection(s). Powered by [www.focalagent.com](http://www.focalagent.com)

To view this property please contact Connells on

**T 01622 751034**  
**E [maidstone@connells.co.uk](mailto:maidstone@connells.co.uk)**

30 King Street  
 MAIDSTONE ME14 1BS

**EPC Rating: E**

Tenure: Freehold

**view this property online** [connells.co.uk/Property/MAI407504](http://connells.co.uk/Property/MAI407504)



1. MONEY LAUNDERING REGULATIONS Intending purchasers will be asked to produce identification documentation at a later stage and we would ask for your co-operation in order that there will be no delay in agreeing the sale. 2. These particulars do not constitute part or all of an offer or contract. 3. The measurements indicated are supplied for guidance only and as such must be considered incorrect. Potential buyers are advised to recheck measurements before committing to any expense. 4. We have not tested any apparatus, equipment, fixtures, fittings or services and it is in the buyers interest to check the working condition of any appliances.

Connells Residential is registered in England and Wales under company number 1489613, Registered Office is Cumbria House, 16-20 Hockliffe Street, Leighton Buzzard, Bedfordshire, LU7 1GN. VAT Registration Number is 500 2481 05.

**See all our properties at [www.connells.co.uk](http://www.connells.co.uk) | [www.rightmove.co.uk](http://www.rightmove.co.uk) | [www.zoopla.co.uk](http://www.zoopla.co.uk)**

Property Ref: MAI407504 - 0002