



Connells

Matthews Avenue
Harrietsham Maidstone

Matthews Avenue
Harrietsham Maidstone ME17 1GJ

for sale offers over
£350,000



Property Description

Situated on this popular development, the home benefits from a serene location while still being convenient to the amenities of Harrietsham. Residents will enjoy easy access to the nearby train station, facilitating seamless travel to London and other major destinations. Families will appreciate the proximity to reputable school. Furthermore, a diverse array of local shops, pubs and restaurants, provide convenience for everyday needs. Harrietsham is a popular village with a primary school, railway station, two shops, post office and gastro pub. The large village of Lenham is only a short drive and the M20 and Maidstone are easily accessed.



Entrance Hall

Cloakroom

Lounge/Diner

15' 1" Max x 14' 5" Max (4.60m Max x 4.39m Max)

Kitchen

12' 3" Max x 8' 1" Max (3.73m Max x 2.46m Max)

Landing

Bedroom One

13' 9" Max x 8' 6" Max (4.19m Max x 2.59m Max)

En Suite

Bedroom Two

10' 1" Max x 8' 6" Max (3.07m Max x 2.59m Max)

Bedroom Three

8' 9" x 6' 4" (2.67m x 1.93m)

Bathroom

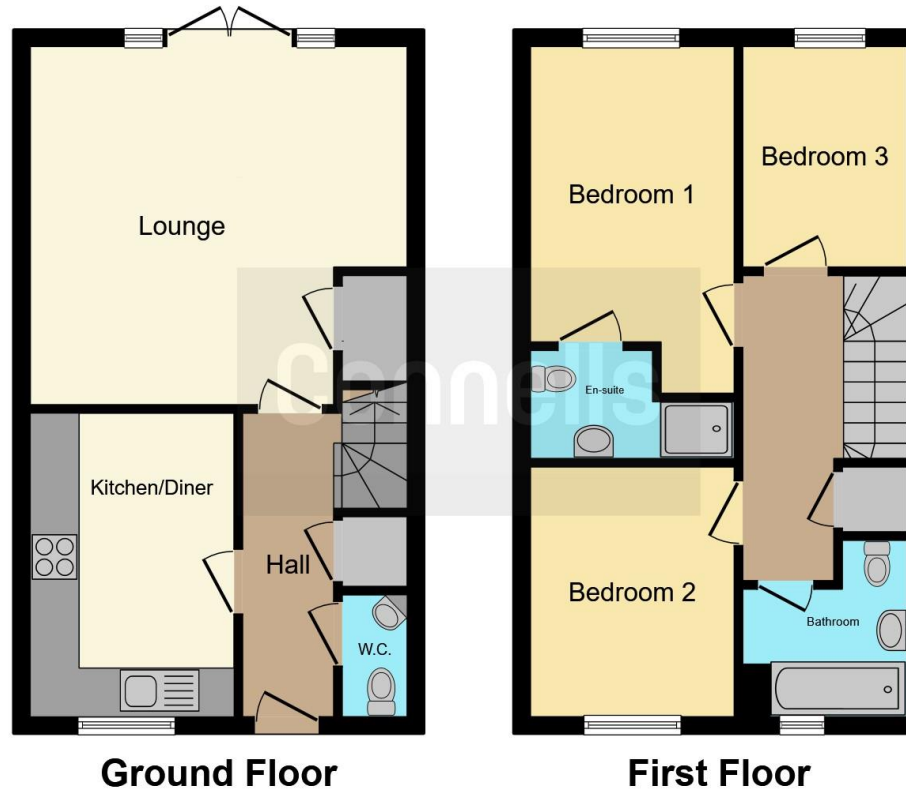
Rear Garden

Parking









This floor plan is for illustrative purposes only. It is not drawn to scale. Any measurements, floor areas (including any total floor area), openings and orientation are approximate. No details are guaranteed, they cannot be relied upon for any purpose and they do not form part of any agreement. No liability is taken for any error, omission or misstatement. A party must rely upon its own inspection(s). Powered by www.focalagent.com

To view this property please contact Connells on

T 01622 751034
E maidstone@connells.co.uk

30 King Street
 MAIDSTONE ME14 1BS

EPC Rating: B

Tenure: Freehold

view this property online connells.co.uk/Property/MAI407216



1. MONEY LAUNDERING REGULATIONS Intending purchasers will be asked to produce identification documentation at a later stage and we would ask for your co-operation in order that there will be no delay in agreeing the sale. 2. These particulars do not constitute part or all of an offer or contract. 3. The measurements indicated are supplied for guidance only and as such must be considered incorrect. Potential buyers are advised to recheck measurements before committing to any expense. 4. We have not tested any apparatus, equipment, fixtures, fittings or services and it is in the buyers interest to check the working condition of any appliances.

Connells Residential is registered in England and Wales under company number 1489613, Registered Office is Cumbria House, 16-20 Hockliffe Street, Leighton Buzzard, Bedfordshire, LU7 1GN. VAT Registration Number is 500 2481 05.

See all our properties at www.connells.co.uk | www.rightmove.co.uk | www.zoopla.co.uk

Property Ref: MAI407216 - 0005