



Connells

St. Lawrence Crescent
Coxheath Maidstone



Property Description

Three bedroom house benefits from spacious accommodation throughout to include a downstairs WC, en-suite to master bedroom, with additional off street parking and lovely rear gardens. Located in the popular village of Coxheath and well within easy access to local shops, schools and amenities. Maidstone town centre is approximately 3.7 miles away and offers a vast array of shops, restaurants and leisure facilities.



Entrance Hall

Cloakroom

Lounge

16' 8" x 13' 8" (5.08m x 4.17m)

Kitchen

7' 4" x 9' 6" (2.24m x 2.90m)

Bedroom 1

13' 9" x 9' 7" (4.19m x 2.92m)

En Suite

Bedroom 2

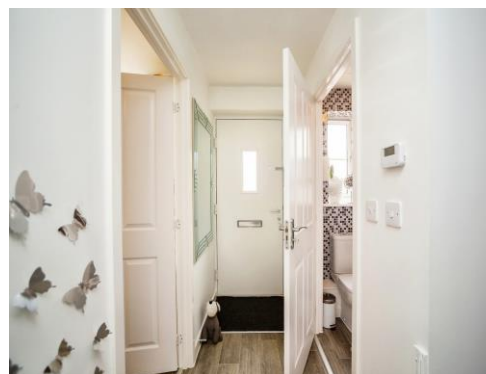
9' 11" x 9' 7" (3.02m x 2.92m)

Bedroom 3

6' 11" x 10' 3" (2.11m x 3.12m)

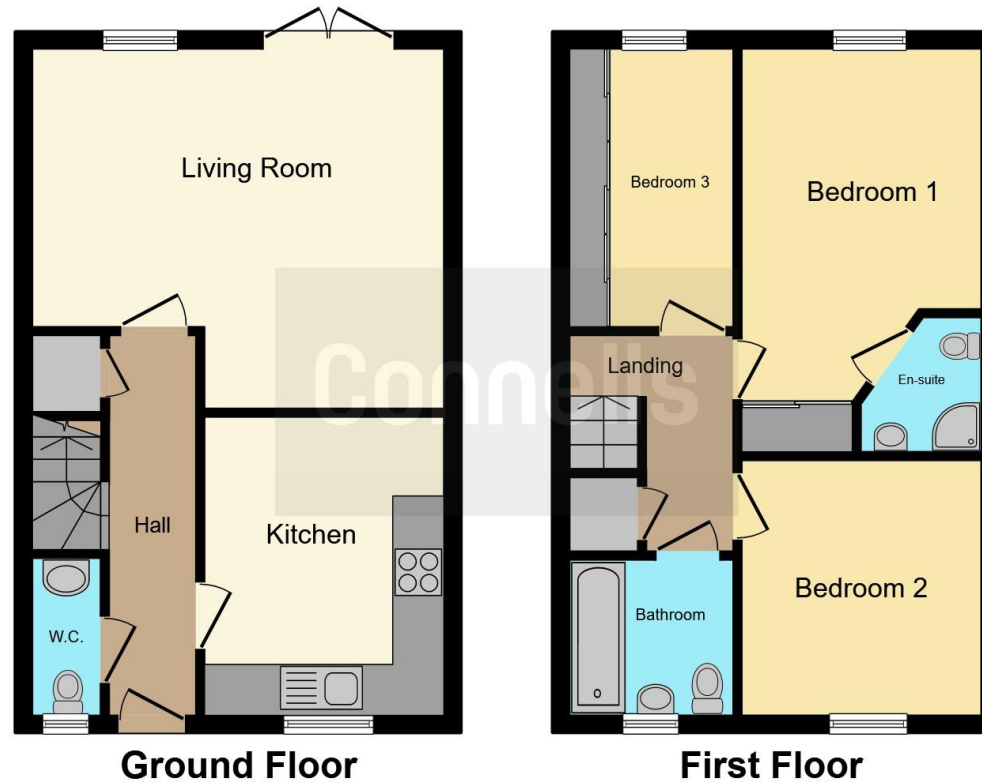
Landing

Bathroom









This floor plan is for illustrative purposes only. It is not drawn to scale. Any measurements, floor areas (including any total floor area), openings and orientation are approximate. No details are guaranteed, they cannot be relied upon for any purpose and they do not form part of any agreement. No liability is taken for any error, omission or misstatement. A party must rely upon its own inspection(s). Powered by www.focalagent.com

To view this property please contact Connells on

T 01622 751034
E maidstone@connells.co.uk

30 King Street
 MAIDSTONE ME14 1BS

EPC Rating: B

view this property online connells.co.uk/Property/MAI407417

Tenure: Freehold



1. MONEY LAUNDERING REGULATIONS Intending purchasers will be asked to produce identification documentation at a later stage and we would ask for your co-operation in order that there will be no delay in agreeing the sale. 2. These particulars do not constitute part or all of an offer or contract. 3. The measurements indicated are supplied for guidance only and as such must be considered incorrect. Potential buyers are advised to recheck measurements before committing to any expense. 4. We have not tested any apparatus, equipment, fixtures, fittings or services and it is in the buyers interest to check the working condition of any appliances.

Connells Residential is registered in England and Wales under company number 1489613, Registered Office is Cumbria House, 16-20 Hockliffe Street, Leighton Buzzard, Bedfordshire, LU7 1GN. VAT Registration Number is 500 2481 05.

See all our properties at www.connells.co.uk | www.rightmove.co.uk | www.zoopla.co.uk

Property Ref: MAI407417 - 0003