



Connells

Churchfields
Harrietsham Maidstone



Property Description

This well proportioned bungalow features a spacious entrance hallway, open plan living room and beautiful fitted kitchen/diner with fully integrated appliances, two double bedrooms, a family bathroom and additional ensuite bathroom to the main bedroom. Externally the enclosed rear garden can be accessed from the dining area and side gate and there is off road parking to the front. The popular village of Harrietsham offers a well regarded Primary School, Medical Centre as well as Post Office, village hall and local pub. Commuters are well served, with Harrietsham mainline train station just 1/2 mile away with regular links to London Victoria. The County Town of Maidstone town centre is approximately 8 miles away, with its wide range of shopping and leisure and transport facilities.



Entrance Hall

Lounge/Kitchen/Dining Area

21' 6" Max x 17' 8" Max (6.55m Max x 5.38m Max)

Bedroom One

11' 4" Max x 10' 5" Max (3.45m Max x 3.17m Max)

Ensuite

Bedroom Two

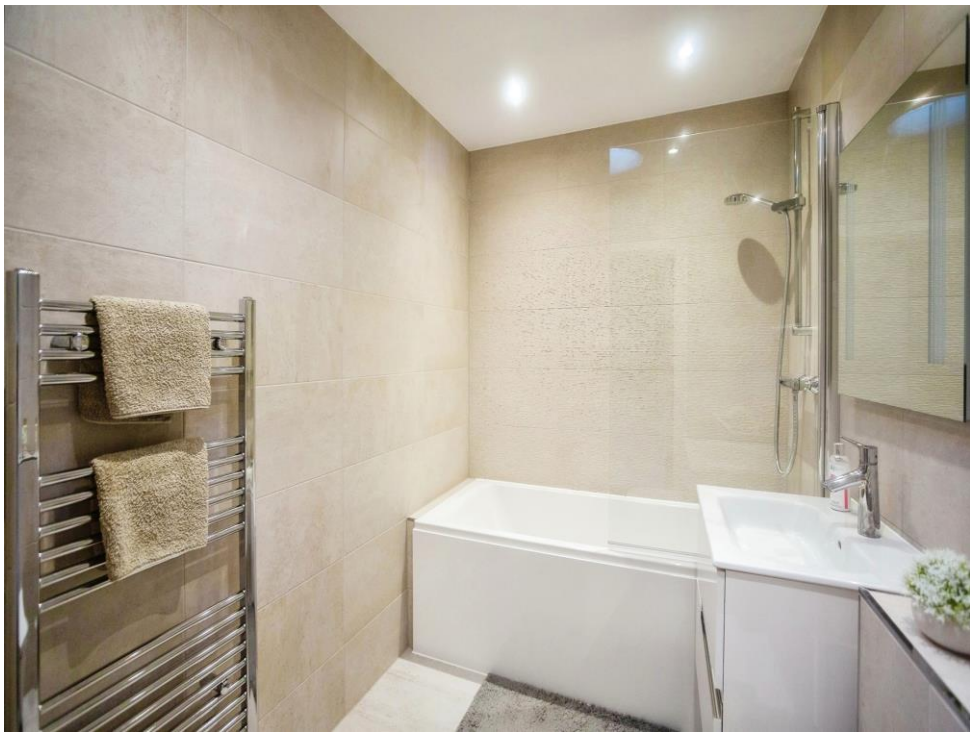
10' 5" Max x 9' 8" Max (3.17m Max x 2.95m Max)

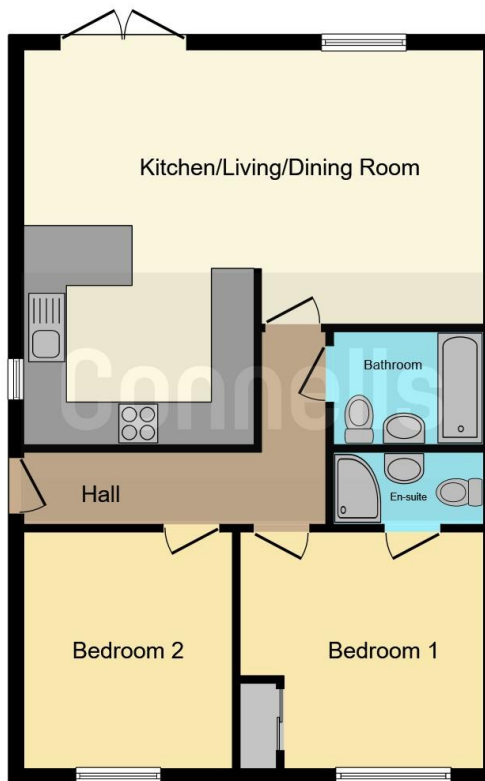
Bathroom

Rear Garden

Parking







This floor plan is for illustrative purposes only. It is not drawn to scale. Any measurements, floor areas (including any total floor area), openings and orientation are approximate. No details are guaranteed, they cannot be relied upon for any purpose and they do not form part of any agreement. No liability is taken for any error, omission or misstatement. A party must rely upon its own inspection(s). Powered by www.focalagent.com

To view this property please contact Connells on

T 01622 751034
E maidstone@connells.co.uk

30 King Street
MAIDSTONE ME14 1BS

EPC Rating: B

Tenure: Freehold

view this property online connells.co.uk/Property/MAI407341



1. MONEY LAUNDERING REGULATIONS Intending purchasers will be asked to produce identification documentation at a later stage and we would ask for your co-operation in order that there will be no delay in agreeing the sale. 2. These particulars do not constitute part or all of an offer or contract. 3. The measurements indicated are supplied for guidance only and as such must be considered incorrect. Potential buyers are advised to recheck measurements before committing to any expense. 4. We have not tested any apparatus, equipment, fixtures, fittings or services and it is in the buyers interest to check the working condition of any appliances.

Connells Residential is registered in England and Wales under company number 1489613, Registered Office is Cumbria House, 16-20 Hockliffe Street, Leighton Buzzard, Bedfordshire, LU7 1GN. VAT Registration Number is 500 2481 05.

See all our properties at www.connells.co.uk | www.rightmove.co.uk | www.zoopla.co.uk

Property Ref: MAI407341 - 0003