



Connells

Farleigh Hill
Tovil Maidstone



Property Description

This spacious three double bedroom family home situated over three floors is offered to the market with no onward chain and viewings are strongly advised to fully appreciate everything this home has to offer. Benefits include a recently added modern fitted kitchen with integrated appliances, downstairs w.c, separate lounge, three generous sized bedrooms with the master benefitting from an ensuite shower room, jack and jill bathroom, low maintenance rear garden and off road parking to the rear for two vehicles. Conveniently located close to local shops, schools and close to Maidstone town centre with mainline train links to London.

Maidstone is the largest town in Kent and lies 32 miles south east of London, trains run directly into London taking no longer than an hour on the fast train. The popular Bluewater shopping centre is only 20 miles away however if you like a day out to the coast, Whitstable is only 28 miles away.

The town centre boasts two main shopping centres, The Mall and Fremlin Walk, with a mixture of the high streets favourite stores plus some unique stores too. It has a vast selection of restaurants and bars and offers vibrant nightlife.

Maidstone is a fantastic location to reach all attractions Kent has to offer and is perfect for couples, families and groups of friends with a real mixture of different things to do varying for exploring castles, enjoying fresh local food, special events, sport activities, beautiful countryside walks & numerous villages



Ground Floor

Entrance Hall

Cloakroom

Lounge

16' 8" x 13' 1" (5.08m x 3.99m)

Kitchen

11' 5" Max x 9' 7" Max (3.48m Max x 2.92m Max)

First Floor

Landing

Bedroom Two

16' 8" Max x 11' 11" Max (5.08m Max x 3.63m Max)

Bedroom Three

13' 4" x 7' 11" (4.06m x 2.41m)

Bathroom

Second Floor

Bedroom One

18' 5" Max x 9' 7" Max (5.61m Max x 2.92m Max)

Restricted head height

En Suite

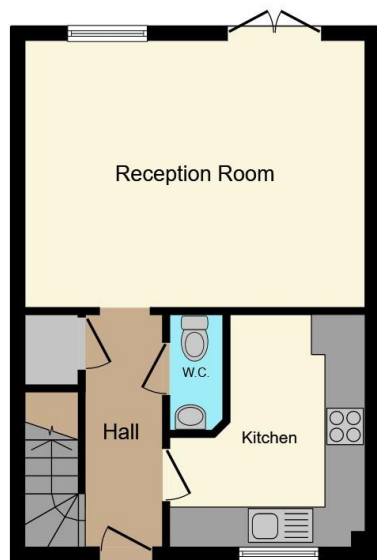
Car Port

Rear Garden

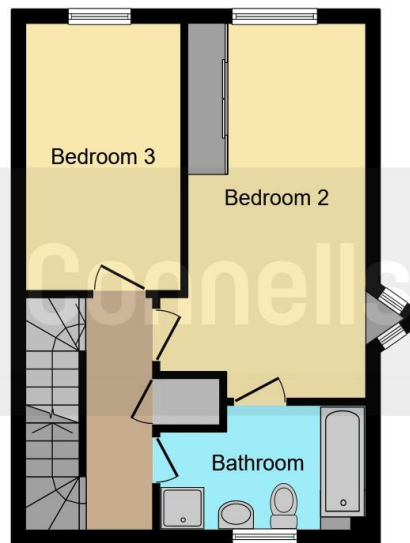








Ground Floor



First Floor



Second Floor

This floor plan is for illustrative purposes only. It is not drawn to scale. Any measurements, floor areas (including any total floor area), openings and orientation are approximate. No details are guaranteed, they cannot be relied upon for any purpose and they do not form part of any agreement. No liability is taken for any error, omission or misstatement. A party must rely upon its own inspection(s). Powered by www.focalagent.com

To view this property please contact Connells on

T 01622 751034
E maidstone@connells.co.uk

30 King Street
MAIDSTONE ME14 1BS

EPC Rating: C

Tenure: Freehold

view this property online connells.co.uk/Property/MAI407277



1. MONEY LAUNDERING REGULATIONS Intending purchasers will be asked to produce identification documentation at a later stage and we would ask for your co-operation in order that there will be no delay in agreeing the sale. 2. These particulars do not constitute part or all of an offer or contract. 3. The measurements indicated are supplied for guidance only and as such must be considered incorrect. Potential buyers are advised to recheck measurements before committing to any expense. 4. We have not tested any apparatus, equipment, fixtures, fittings or services and it is in the buyers interest to check the working condition of any appliances.

Connells Residential is registered in England and Wales under company number 1489613, Registered Office is Cumbria House, 16-20 Hockliffe Street, Leighton Buzzard, Bedfordshire, LU7 1GN. VAT Registration Number is 500 2481 05.

See all our properties at www.connells.co.uk | www.rightmove.co.uk | www.zoopla.co.uk

Property Ref: MAI407277 - 0004