



Connells

Cherry Tree House Plough Wents Road
Chart Sutton Maidstone

Cherry Tree House Plough Wents Road Chart Sutton Maidstone ME17 3RY

for sale offers in excess of
£625,000



Property Description

This immaculately presented four double bedroom detached family home boasts spacious living accommodation throughout and viewings are strongly advised to truly appreciate everything this home has to offer. Ground floor boasts a large entrance hall with downstairs w.c, a sizeable separate lounge area with brick built feature fire place leading through to the heart of the home in the form of an exceptional modern fitted kitchen/diner complete with integrated appliances and large central island with fitted breakfast area and bi-fold patio doors leading out to the rear garden.

First floor boasts four generous sized double bedrooms and a modern fitted family bathroom with a large walk in shower.

Externally you have a large private rear garden mainly laid to lawn with patio area ideal for outdoor dining and entertaining along with off road driveway parking and detached garage. This property has a magnificent blend of historical features including exposed brickwork, beams and fireplace amongst a mixed of modern technology and decoration throughout.



Entrance Hall

Cloakroom

Lounge

20' 5" Max x 11' 3" Max (6.22m Max x 3.43m Max)

Kitchen/Diner

23' 11" Max x 20' 11" Max (7.29m Max x 6.38m Max)

Landing

Bedroom One

15' 1" Max x 11' 9" Max (4.60m Max x 3.58m Max)

Bedroom Two

13' 11" Max x 11' 8" Max (4.24m Max x 3.56m Max)

Bedroom Three

11' 2" Max x 10' 4" Max (3.40m Max x 3.15m Max)

Bedroom Four

11' 4" Max x 7' 4" Max (3.45m Max x 2.24m Max)

Bathroom

Rear Garden

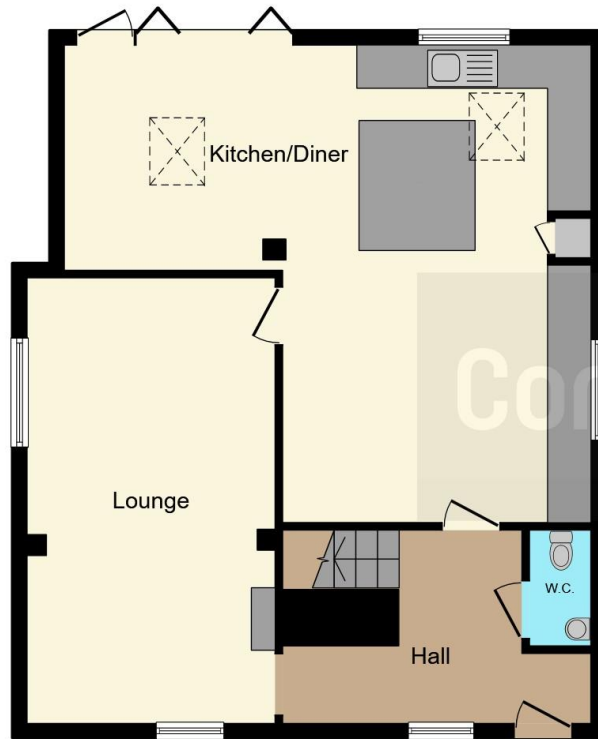
Driveway

Garage

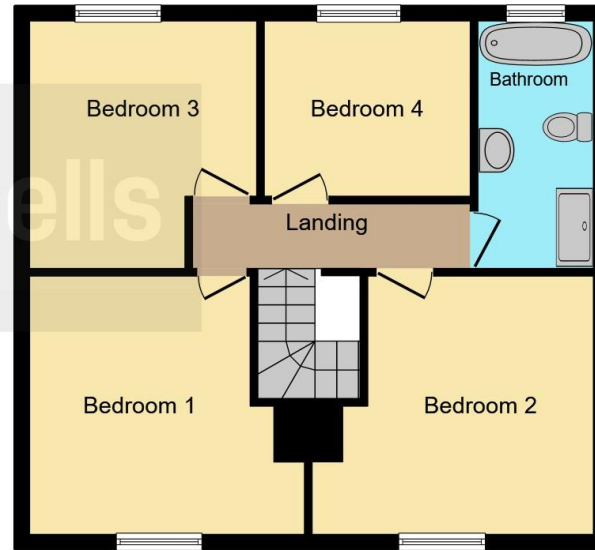








Ground Floor



First Floor

This floor plan is for illustrative purposes only. It is not drawn to scale. Any measurements, floor areas (including any total floor area), openings and orientation are approximate. No details are guaranteed, they cannot be relied upon for any purpose and they do not form part of any agreement. No liability is taken for any error, omission or misstatement. A party must rely upon its own inspection(s). Powered by www.focalagent.com

To view this property please contact Connells on

T 01622 751034
E maidstone@connells.co.uk

30 King Street
 MAIDSTONE ME14 1BS

EPC Rating: D

view this property online connells.co.uk/Property/MAI407268

Tenure: Freehold



1. MONEY LAUNDERING REGULATIONS Intending purchasers will be asked to produce identification documentation at a later stage and we would ask for your co-operation in order that there will be no delay in agreeing the sale. 2. These particulars do not constitute part or all of an offer or contract. 3. The measurements indicated are supplied for guidance only and as such must be considered incorrect. Potential buyers are advised to recheck measurements before committing to any expense. 4. We have not tested any apparatus, equipment, fixtures, fittings or services and it is in the buyers interest to check the working condition of any appliances.

Connells Residential is registered in England and Wales under company number 1489613, Registered Office is Cumbria House, 16-20 Hockliffe Street, Leighton Buzzard, Bedfordshire, LU7 1GN. VAT Registration Number is 500 2481 05.

See all our properties at www.connells.co.uk | www.rightmove.co.uk | www.zoopla.co.uk

Property Ref: MAI407268 - 0006