



Connells

Alkham Road
Maidstone



Property Description

This two bedroom maisonette perfect for first time buyers and investment buyers, with lots to offer such as two double bedrooms. An open planned living/dining room with access to the balcony. Plus a spacious kitchen. This maisonette also comes with a private garden.

Maidstone is a heritage town with surrounding villages in the heart of the Kent Countryside. Leeds Castle, Kent Event Centre, The Hop Farm, Mote Park and Brands Hatch hold major events throughout the year. Maidstone holds a vibrant nightlife with a good selection of restaurants, bars, nightclubs, shopping centres, selection of shops, music events, multiplex cinema with a bowling alley, Saturday market, charity runs, sporting events and football stadium. It has three stations - Maidstone East, Maidstone West and Maidstone Barracks. The Maidstone East line runs between Ashford and London Victoria, Maidstone West offers services to London St Pancras via Gravesend/ Strood as well as Paddock Wood.



Lounge

17' 10" x 9' 11" (5.44m x 3.02m)

Kitchen

10' x 6' 11" (3.05m x 2.11m)

Bedroom One

14' 3" x 11' 11" (4.34m x 3.63m)

Bedroom Two

10' x 9' 4" (3.05m x 2.84m)

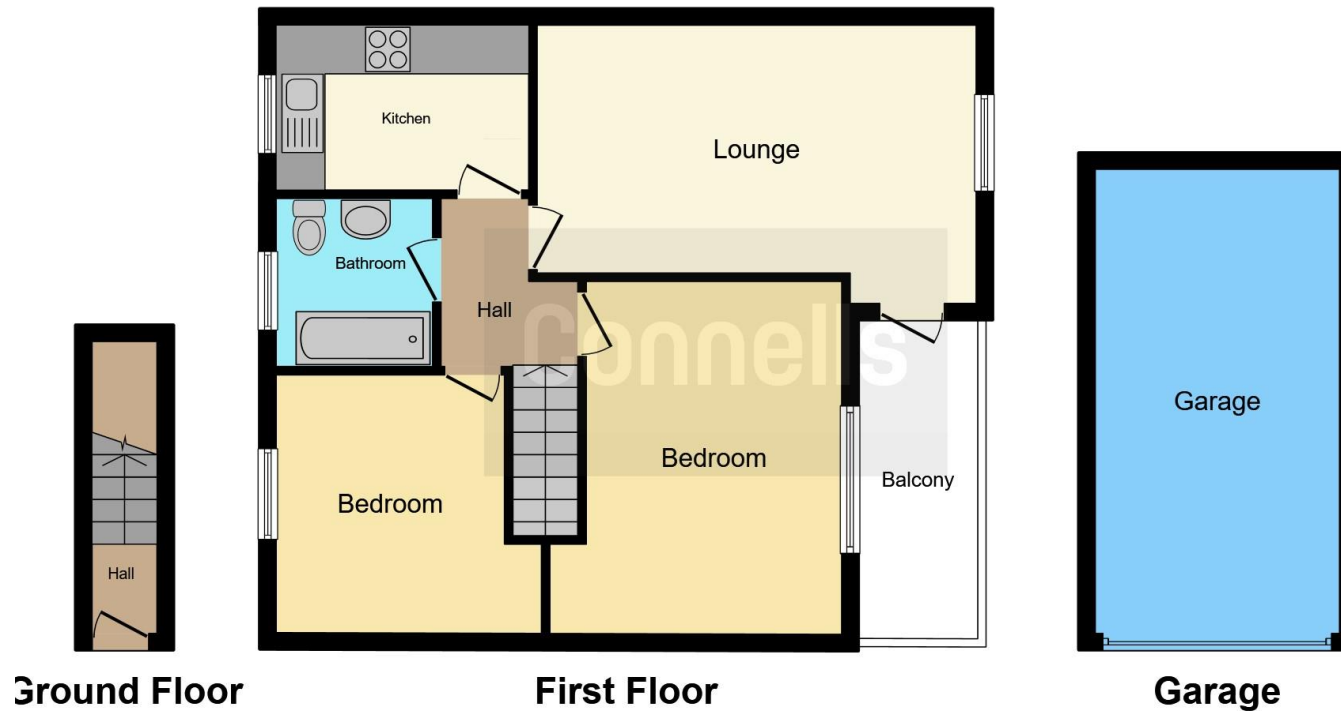
Bathroom

Garage









This floorplan is for illustrative purposes only and is not drawn to scale. Measurements, floor-areas, openings and orientations are approximate. They should not be relied upon for any purpose and do not form any part of an agreement. No liability is taken for any error or mis-statement. All parties must rely on their own inspections.

To view this property please contact Connells on

T 01622 751034
E maidstone@connells.co.uk

30 King Street
 MAIDSTONE ME14 1BS

EPC Rating: C

Tenure: Leasehold

view this property online connells.co.uk/Property/MAI407309

This is a Leasehold property. We are awaiting further details about the Term of the lease. For further information please contact the branch. Please note additional fees could be incurred for items such as Leasehold packs.



1. MONEY LAUNDERING REGULATIONS Intending purchasers will be asked to produce identification documentation at a later stage and we would ask for your co-operation in order that there will be no delay in agreeing the sale. 2. These particulars do not constitute part or all of an offer or contract. 3. The measurements indicated are supplied for guidance only and as such must be considered incorrect. Potential buyers are advised to recheck measurements before committing to any expense. 4. We have not tested any apparatus, equipment, fixtures, fittings or services and it is in the buyers interest to check the working condition of any appliances.

Connells Residential is registered in England and Wales under company number 1489613, Registered Office is Cumbria House, 16-20 Hockliffe Street, Leighton Buzzard, Bedfordshire, LU7 1GN. VAT Registration Number is 500 2481 05.

See all our properties at www.connells.co.uk | www.rightmove.co.uk | www.zoopla.co.uk

Property Ref: MAI407309 - 0002