



**Connells**

Shepherds Way  
Langley Maidstone





### Property Description

This extended detached chalet bungalow with a large drive & ample amounts of outside space in our opinion makes an ideal purchase. The property also includes a self-contained annex with kitchen area. Upon entering the property you will find an entrance porch leading to a large entrance hall giving access into the garage, living room, dining room, toilet / shower room, and Annex. The Annex has a large sized lounge with a small fitted kitchen area, one bedroom, and a shower room making this the ideal space for staying guests or family members. The living room is a large size and one of the focal points of the house with plenty of natural light and has a fireplace, the living room leads into the conservatory which gives you plenty of flexible entertaining space no matter the weather! The dining room is a large size and leads into the kitchen but also provides access to the lounge and has the staircase leading to the first floor.

On the first floor you will find bedroom one with en-suite, bedroom two with a good size dressing area and bedroom three as well as an additional shower room. At the rear of the house there is a mature and secluded garden with a patio area, ideal for entertaining.

Langley village, is ideal for anyone looking to escape to a village life, and offers plenty of local amenities including supermarket, doctor's surgery, schools, church and inns. Located a short distance from the M20 & mainline stations can be found in Headcorn, Hollingbourne & Bearsted.





**Ground Floor**

**Entrance Hall**

**Bathroom**

**Kitchen/diner**

16' 1" Max x 11' 9" Max ( 4.90m Max x 3.58m Max )

**Dining Room**

18' 3" Max x 15' 8" Max ( 5.56m Max x 4.78m Max )

**Lounge**

21' 5" Max x 15' Max ( 6.53m Max x 4.57m Max )

**Conservatory**

**First Floor**

**Landing**

**Bedroom One**

21' 3" Max x 8' 8" ( 6.48m Max x 2.64m )  
Restricted head height

**En Suite**

Restricted head height

**Bedroom Two**

18' 1" Max x 15' 8" Max ( 5.51m Max x 4.78m Max )  
Restricted head height

**Dressing Room**

**Bedroom Three**

18' 3" Max x 11' 1" Max ( 5.56m Max x 3.38m Max )

Restricted head height.

**Shower Room**

Restricted head height

**Annexe**

**Annexe Lounge**

14' 10" x 12' ( 4.52m x 3.66m )

**Ensuite**

**Annexe Bedroom Four**

10' 2" Max x 8' 11" Max ( 3.10m Max x 2.72m Max )

**Exterior**

**Front**

**Garage**

**Rear Garden**

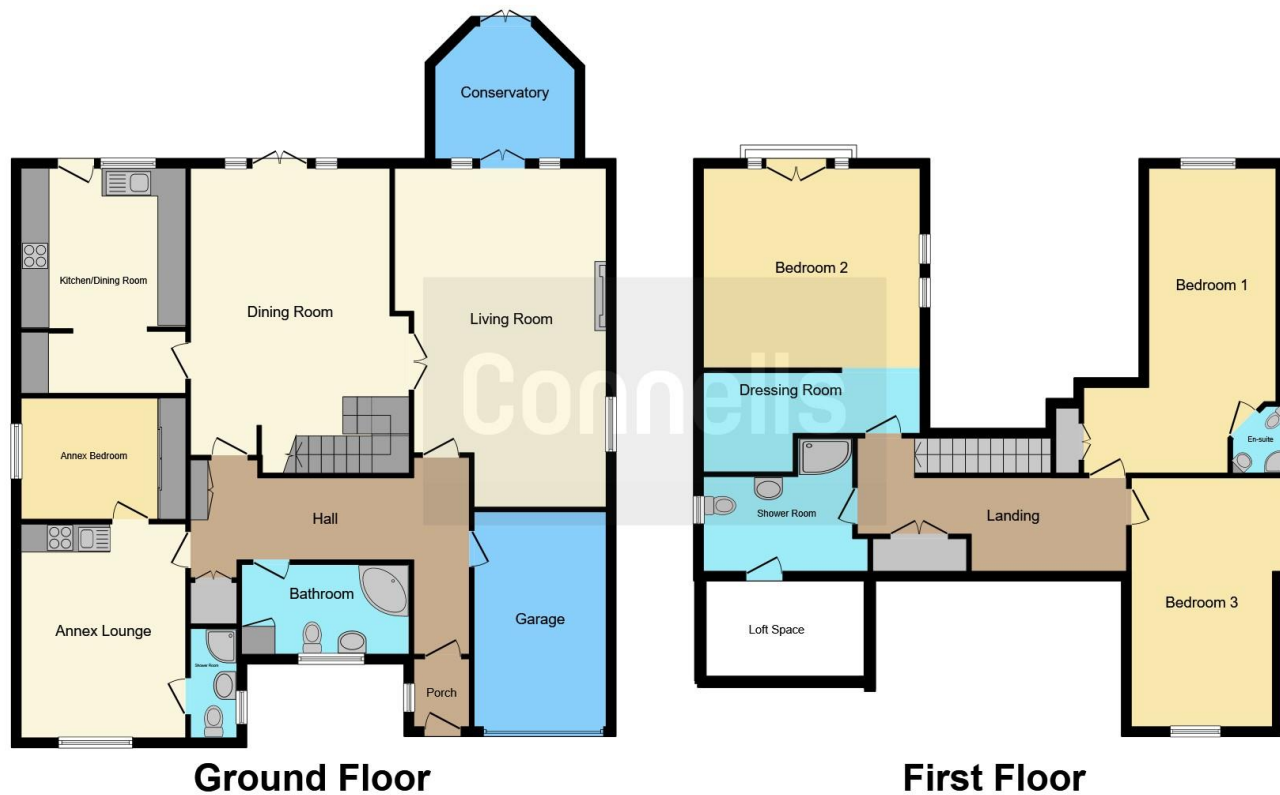












This floorplan is for illustrative purposes only and is not drawn to scale. Measurements, floor-areas, openings and orientations are approximate. They should not be relied upon for any purpose and do not form part of an agreement. No liability is taken for any error or mis-statement. All parties must rely on their own inspections.

To view this property please contact Connells on

**T 01622 751034**  
**E [maidstone@connells.co.uk](mailto:maidstone@connells.co.uk)**

30 King Street  
 MAIDSTONE ME14 1BS

**EPC Rating: C**

Tenure: Freehold

**view this property online [connells.co.uk/Property/MAI406545](https://connells.co.uk/Property/MAI406545)**



1. MONEY LAUNDERING REGULATIONS Intending purchasers will be asked to produce identification documentation at a later stage and we would ask for your co-operation in order that there will be no delay in agreeing the sale. 2. These particulars do not constitute part or all of an offer or contract. 3. The measurements indicated are supplied for guidance only and as such must be considered incorrect. Potential buyers are advised to recheck measurements before committing to any expense. 4. We have not tested any apparatus, equipment, fixtures, fittings or services and it is in the buyers interest to check the working condition of any appliances.

Connells Residential is registered in England and Wales under company number 1489613, Registered Office is Cumbria House, 16-20 Hockliffe Street, Leighton Buzzard, Bedfordshire, LU7 1GN. VAT Registration Number is 500 2481 05.

**See all our properties at [www.connells.co.uk](http://www.connells.co.uk) | [www.rightmove.co.uk](http://www.rightmove.co.uk) | [www.zoopla.co.uk](http://www.zoopla.co.uk)**

Property Ref: MAI406545 - 0022