

# YARROW

Designed with flexible family living in mind, the Yarrow is a four-bedroom, three-storey property with a carport for two cars.

142 sq m (1,529 sq ft)

## CHILMINGTON RISE KENT

ASHFORD KENT TN23 3DN

[www.chilmington-rise.co.uk](http://www.chilmington-rise.co.uk)



Connells

# YARROW

Designed with flexible family living in mind, the Yarrow is a four-bedroom, three-storey property with a carport for two cars.

**142 sq m (1,529 sq ft)**

The ground floor features an open plan living space wrapped around the entrance and hall. This clever design creates individual areas for the kitchen, dining area and living room.

The first floor features an en-suite bedroom and a family bathroom, with the Master Bedroom and bedroom 4 on the second floor.

## GROUND FLOOR

### Living Area

5.33m x 4.89m 17'6" x 16'1"

### Kitchen

4.37m x 2.56m 14'4" x 8'5"

## FIRST FLOOR

### Bedroom 3 with en-suite

3.59m x 2.83m 11'10" x 9'3"

### Bedroom 4

4.89m max x 3.01m max 16'1" max x 9'10" max

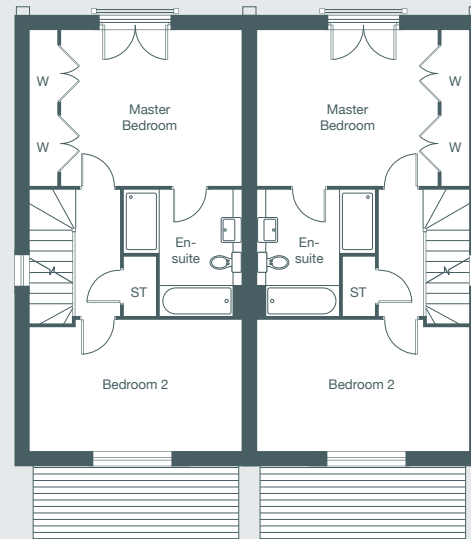
## SECOND FLOOR

### Master Bedroom with en-suite

4.18m x 3.59m x 13'9" x 11'10"

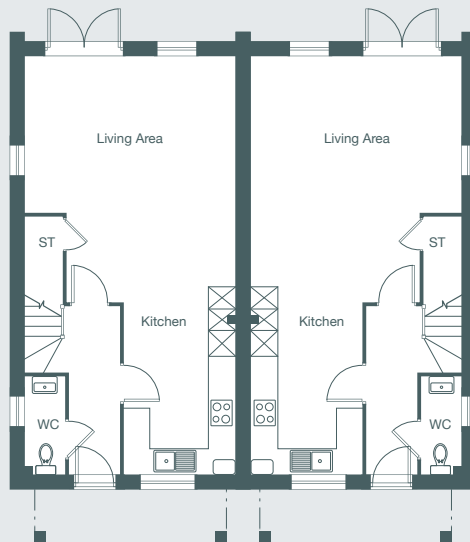
### Bedroom 2

4.89m max x 3.01m max 16'1" max x 9'10" max



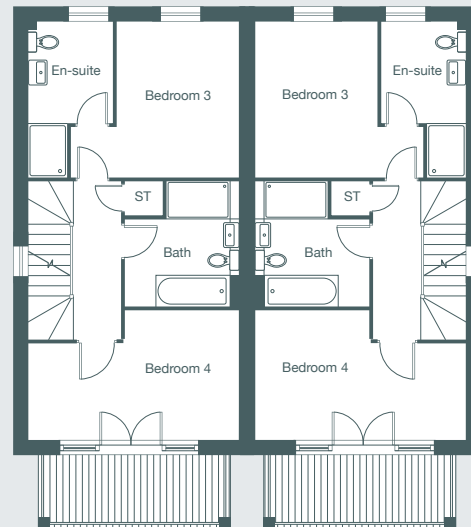
Second Floor Plan Left

Second Floor Plan Right



Ground Floor Plan Left

Ground Floor Plan Right



First Floor Plan Left

First Floor Plan Right

Each set of floor plans may be reproduced at a different scale to others within the brochure. Floor plans, dimensions and CGI illustrations are indicative only and can be liable to change during construction. Please check with the sales agent if you require further information.

**Connells**

### Sales Suite

Open Daily

Monday to Sunday 10am-5pm

### Telephone

01233 622 206

01233 502 020

### YARROW

Plots 198,199.