

FARMER & DYER

RESIDENTIAL SALES & LETTINGS



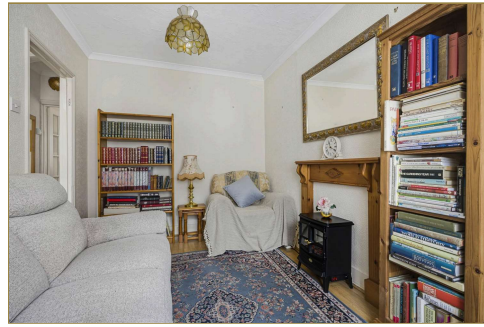
**WYKEHAM ROAD,
READING, RG6 1PW
Price Guide £265,000**

Situated on a quiet Victorian terrace street, close to local amenities and local schools, stands this 2 bedroom Victorian terrace home. The property offers, two good size reception rooms, and a secluded back garden, kitchen to the rear of the property with two double bedrooms upstairs

No.1 Prospect Street, Caversham, Reading, Berkshire RG4 8JB
T 0118 946 1800 W www.farmeranddyer.com
E info@farmeranddyer.com

LIVING ROOM

Bay fronted 14ft living room



DINING ROOM

11ft by 10ft dining room with understairs storage and access to kitchen and garden



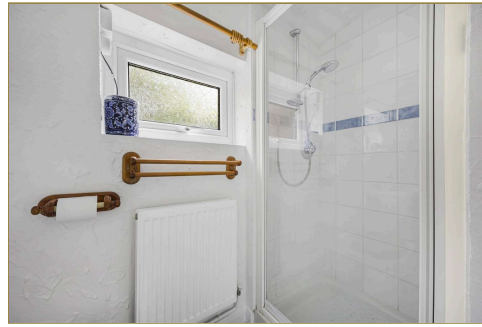
KITCHEN

Kitchen with gas hob, space for fridge freezer, and washing machine



BATHROOM (SHOWER ROOM)

Off the kitchen with large shower, W.C. and sink unit



BEDROOM ONE

Main bedroom to the front of property, 11ft by 11ft with above stairs cupboard



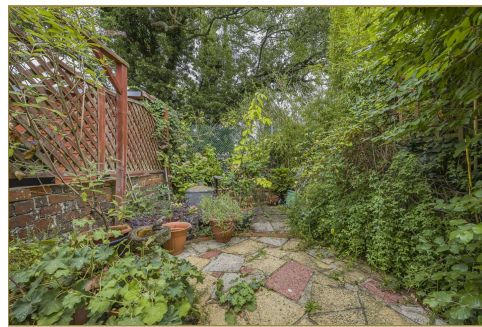
BEDROOM TWO

11ft by 10ft double bedroom to the rear of the property looking over the garden



REAR GARDEN

Lovely mature secluded back garden





TENURE

Freehold

COUNCIL TAX

Band B

SCHOOL CATCHMENT

Earley St. Peters CE Primary School

FREE MORTGAGE ADVICE

We are pleased to be able to offer the services of an Independent Mortgage Adviser who can access a variety of mortgage rates from leading Banks and Building Societies. For a free, no obligation discussion or quote, please contact Stuart Milton, our mortgage adviser, on 0118 9461800

ENERGY EFFICIENCY & ENVIRONMENTAL IMPACT

Energy Rating D

To view the full EPC for this property, you can access the national database with the following web address: <https://find-energy-certificate.service.gov.uk/energy-certificate/3835-0228-2500-0949-3202>

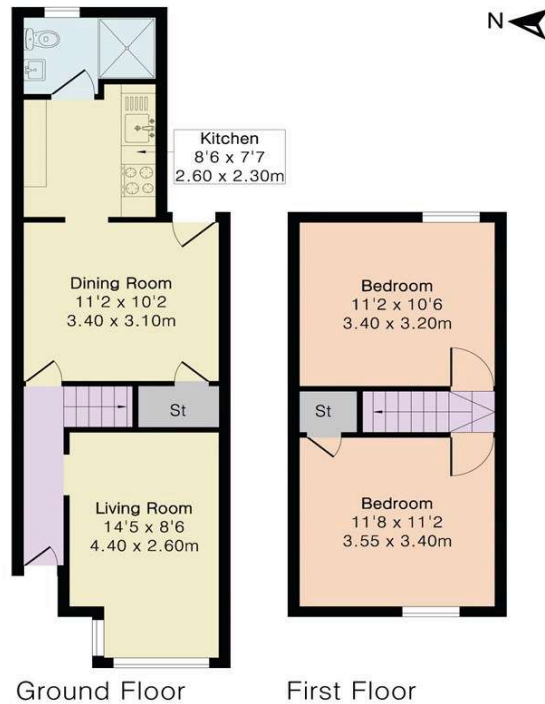
FLOOR PLAN

These floor plans are for guidance purposes only and are not to scale

Approximate Gross Internal Area 662 sq ft - 62 sq m

Ground Floor Area 388 sq ft – 36 sq m

First Floor Area 274 sq ft – 26 sq m



LOCATION

This image is for indicative purposes and cannot be relied upon as wholly correct

