

FARMER & DYER

RESIDENTIAL SALES & LETTINGS



GALSWORTHY DRIVE, CAVERSHAM PARK READING, RG4 6PD

£425,000

Situated in a popular family area of Caversham Park, with access to local schools, stands this extended three bedroom semi-detached family home. The property has a 29ft living/dining room, a 13ft kitchen, South East facing rear garden which is not over looked and includes a garage with off road parking for two cars

No.1 Prospect Street, Caversham, Reading, Berkshire RG4 8JB
T 0118 946 1800 W www.farmeranddyer.com
E info@farmeranddyer.com

LIVING/DINING ROOM

Unlike many properties on Caversham Park, this property has been extended to create a lounge diner of 29ft.



KITCHEN

Extended 13ft x 9ft kitchen, with electric hob and rear door to the garden



BEDROOM ONE

Double bedroom with built in wardrobes to the front of home



BEDROOM TWO

Double bedroom over looking the back garden



BEDROOM THREE

Small double bedroom to the front of the property



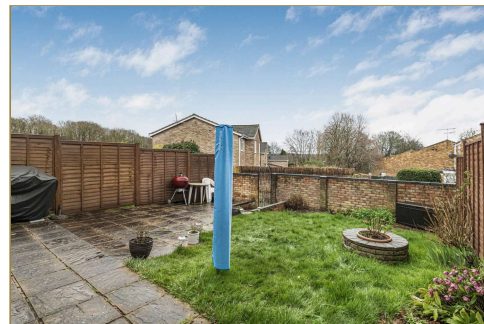
BATHROOM

Refitted family bathroom with an addition of shower cubical



REAR GARDEN

South east facing garden, which is not over looked by neighbouring properties



GARAGE

With off road parking



TENURE

Freehold

COUNCIL TAX

Band C

Micklands Primary School
Highdown School and Sixth Form Centre

FREE MORTGAGE ADVICE

We are pleased to be able to offer the services of an Independent Mortgage Adviser who can access a variety of mortgage rates from leading Banks and Building Societies. For a free, no obligation discussion or quote, please contact Stuart Milton, our mortgage adviser, on 0118 9461800

ENERGY EFFICIENCY & ENVIRONMENTAL IMPACT

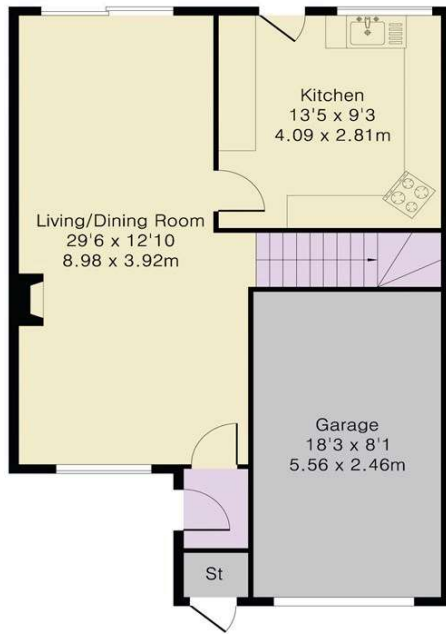
Energy Rating D

To view the full EPC for this property, you can access the national database with the following web address: <https://find-energy-certificate.service.gov.uk/energy-certificate/7908-8093-7247-4636-6900>

FLOOR PLAN

These floor plans are for guidance purposes only and are not to scale

Approximate Gross Internal Area 1204 sq ft – 112 sq m
Ground Floor Area 720 sq ft – 67 sq m
First Floor Area 484 sq ft – 45 sq m



Ground Floor



First Floor



LOCATION

This image is for indicative purposes and cannot be relied upon as wholly correct

