

# FARMER & DYER

## RESIDENTIAL SALES & LETTINGS



**MAYFIELD DRIVE, CAVERSHAM  
READING, RG4 5JT**

**£500,000**

UNEXPECTEDLY RE-AVAILABLE - Offered to the market stands this well presented three bedroom semi detached house, which has the added benefit of not being over looked and with views from the rear over the Mayfield Drive allotments. The current owners have recently refurbished the majority of the house to make it a welcoming family home.

No.1 Prospect Street, Caversham, Reading, Berkshire RG4 8JB  
T 0118 946 1800 W [www.farmeranddyer.com](http://www.farmeranddyer.com)  
E [info@farmeranddyer.com](mailto:info@farmeranddyer.com)

**Lounge**

A cosy lounge with gas fire place.



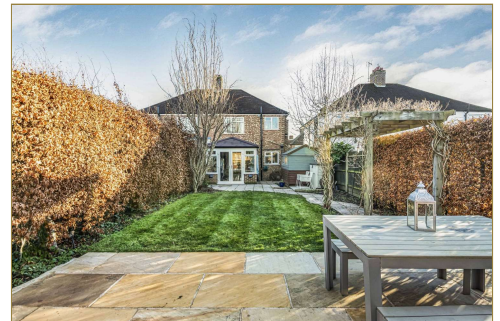
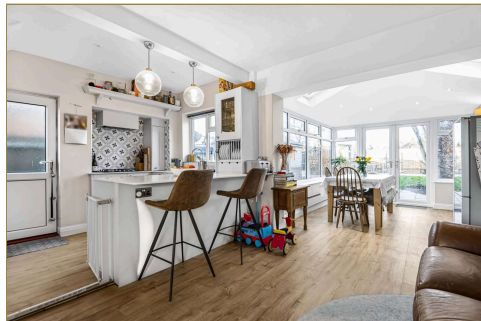
**Reception**

Large reception room, opens up into the kitchen diner, which has recently been refurbished.



**Kitchen**

Recently refurbished, with built oven and microwave, gas hob and built in dishwasher.



**Bedroom 1**

Lovely double bedroom, with built in wardrobes



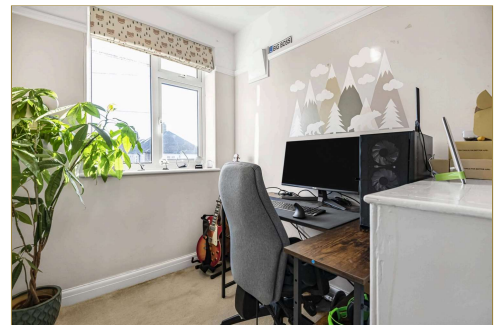
**Bedroom 2**

Double bedroom to the rear of the home with views over the garden and allotments



**Bedroom 3**

Single bedroom, currently being utilised as a study, perfect for home working.



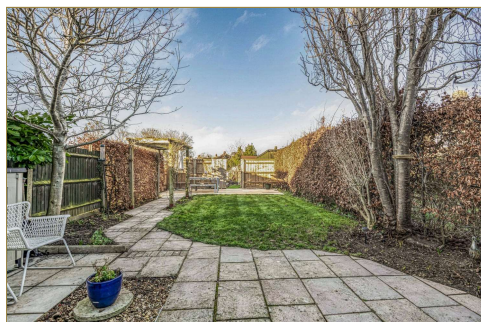
**Bathroom**

Family bathroom with shower over bath.



**Garden**

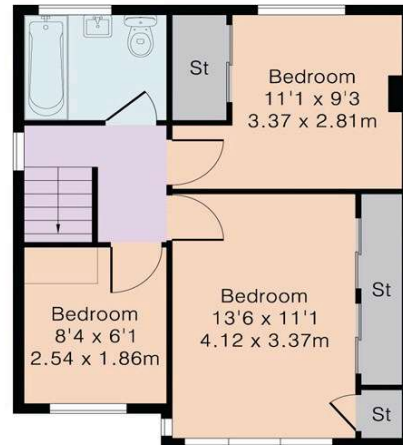
Private garden with patio areas and access to the allotments at the rear.



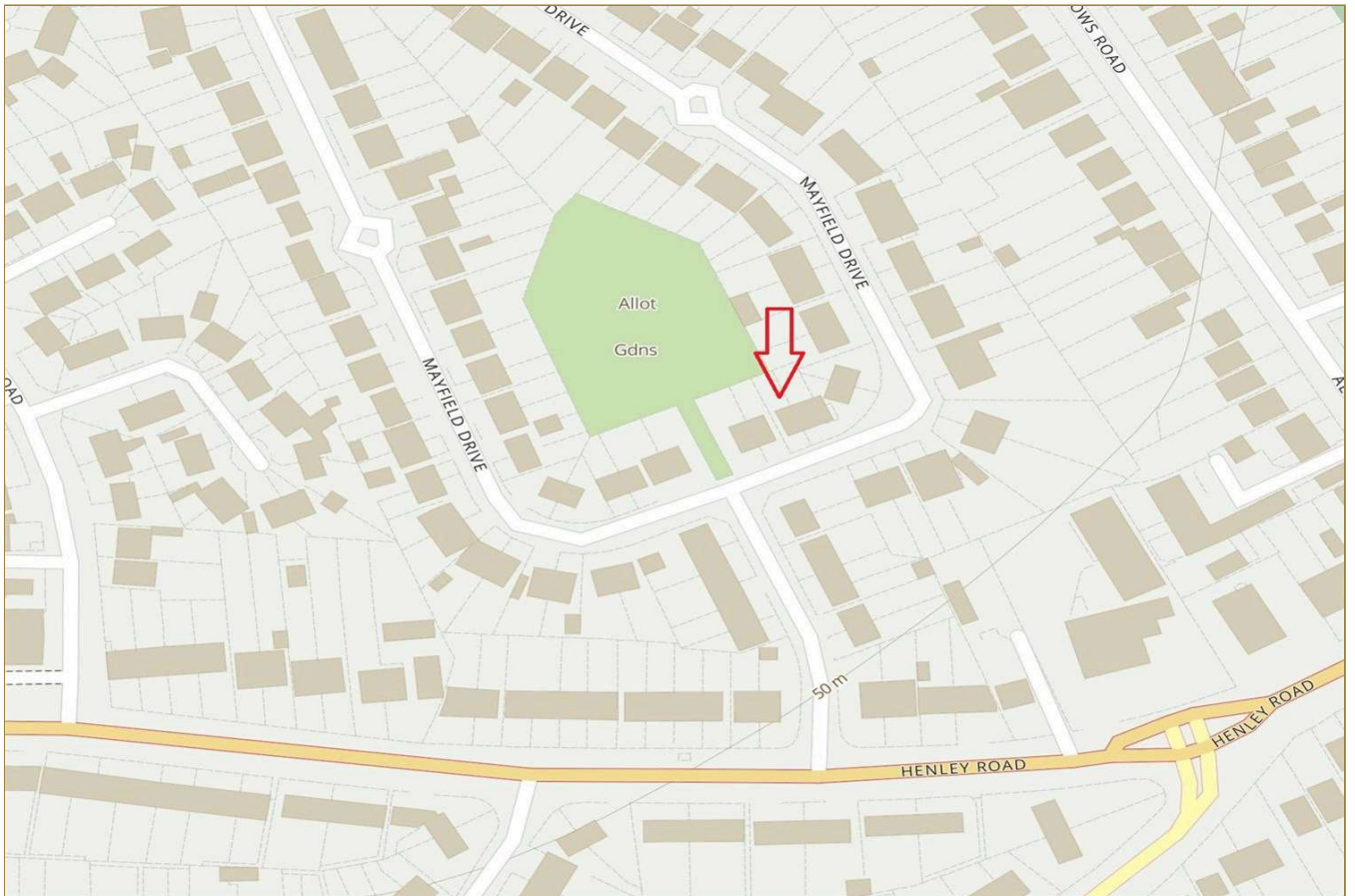
Approximate Gross Internal Area 935 sq ft – 86 sq m  
Ground Floor Area 532 sq ft – 49 sq m  
First Floor Area 403 sq ft – 37 sq m



Ground Floor



First Floor



**COUNCIL TAX**

Band C

**FREE MORTGAGE ADVICE**

We are pleased to be able to offer the services of an Independent Mortgage Adviser who can access a variety of mortgage rates from leading Banks and Building Societies. For a free, no obligation discussion or quote, please contact Stuart Milton, our mortgage adviser, on 0118 9461800

**ENERGY EFFICIENCY & ENVIRONMENTAL IMPACT**

To view the full EPC for this property, you can access the national database with the following web address: <https://find-energy-certificate.service.gov.uk/energy-certificate/2834-1629-7300-0670-3292>