



Upper Brentwood Road, Gidea Park RM2 6LD

welcome to

Upper Brentwood Road, Gidea Park

****THREE BEDROOM EXTENDED FAMILY HOME****

Located just 0.7 miles from Gidea Park Elizabeth Line Station and within easy reach of M25 is this fantastic extended three bedroom family home.

Entrance Hall

UPVC Double Glazed Frosted Front Door, Tiled Floor, Radiator

Lounge

18' 8" x 9' 10" Max (5.69m x 3.00m Max)
UPVC Double glazed Window to Front Aspect,
French Doors to Conservatory, Carpet, Feature
Fireplace, Radiator

Study

10' 3" Max x 8' 4" Into Door Recess (3.12m Max x 2.54m
Into Door Recess)
UPVC Double Glazed Door & Window to Side
Aspect, Carpet, Radiator, Built in Storage

Rear Lounge

13' 10" Into Bay x 13' 9" Max (4.22m Into Bay x 4.19m
Max)
UPVC Double Glazed Window to Rear Aspect, UPVC
Double Glazed French Doors to Conservatory,
Carpet, 2 x Radiators

Kitchen

13' 11" Into Bay x 9' 2" (4.24m Into Bay x 2.79m)
UPVC Bay Window to Front Aspect, Tiled Flooring,
Wooden Worktops, Series of High & Low Level
Units, Range Oven, Dishwasher, Extractor, Fridge

Conservatory

14' 10" Max x 11' 6" Max (4.52m Max x 3.51m Max)
UPVC Double Glazed Windows & French Doors To
Garden, Tiled Floor, Electric Radiators

Shower Room

UPVC Double Glazed Frosted Window to Rear
Aspect, Laminate Flooring, Part Tiled Walls, Cubicle
with Mains Shower, Vanity Sink, Low Level Flush WC,
Radiator

Landing

UPVC Double Glazed Window to Rear Aspect,
Carpet, Access via Loft Ladder to Half Boarded Loft

Bedroom One

13' 9" Max x 12' 3" Into Wardrobes (4.19m Max x 3.73m
Into Wardrobes)
2 X UPVC Double Glazed Windows to Front Aspect,
Carpet, Radiator, Built in Wardrobes

Bedroom Two

11' 5" x 9' 10" Into Wardrobe (3.48m x 3.00m Into
Wardrobe)
UPVC Double Glazed Window to Front Aspect,
Carpet, Radiator, Built in Wardrobes

Bedroom Three

10' 2" x 9' 11" (3.10m x 3.02m)
UPVC Double Glazed Window to Rear Aspect,
Carpet, Radiator, Built in Wardrobe

Bathroom

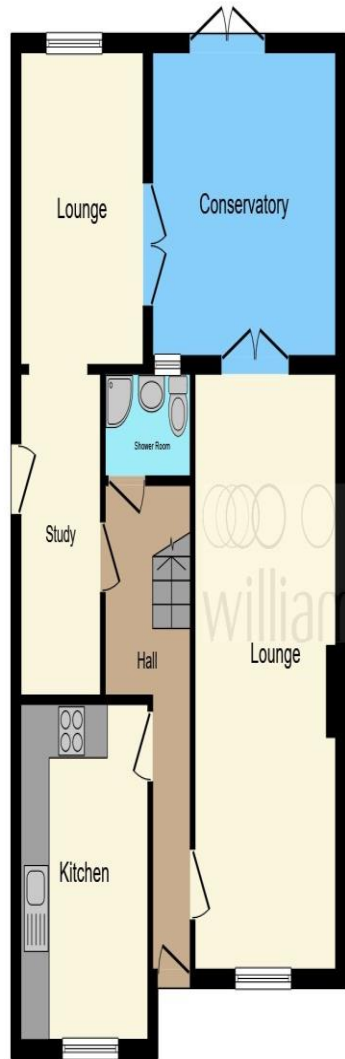
UPVC Double Glazed Frosted Window to Rear &
Side Aspect, Fully Tiled Walls & Floor, Spot Lights,
Corner Bath with Mixer Taps & Shower Attachment,
Cubicle with Power Shower & Rainfall Head,
Pedestal Sink, Low Level Flush WC, Bidet, Radiator,
Airing Cupboard

Front Garden

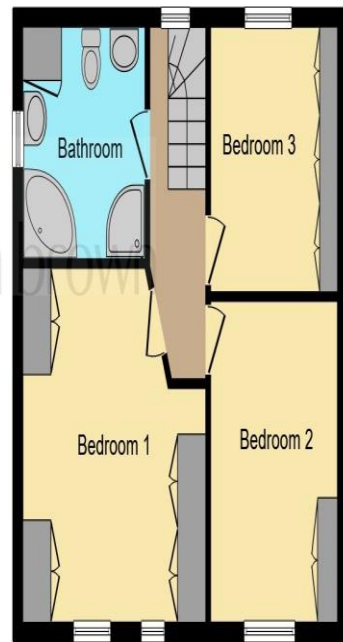
Block Paved Driveway, Off Road Parking via
Dropped Kerb, Flower Beds

Rear Garden

Paved Patio Area, Laid to Lawn, Brick BBQ, Side
Access, Outside Tap, Utility Cupboard



Ground Floor



First Floor

This floor plan is for illustrative purposes only. It is not drawn to scale. Any measurements, floor areas (including any total floor area), openings and orientation are approximate. No details are guaranteed, they cannot be relied upon for any purpose and they do not form part of any agreement. No liability is taken for any error, omission or misstatement. A party must rely upon its own inspection(s). Powered by www.focalagent.com



welcome to
Upper Brentwood Road,
Gidea Park

- THREE BEDROOMS
- SEMI DETACHED
- EXTENDED
- CONSERVATORY
- TWO BATHROOMS

Tenure: Freehold EPC Rating: D

offers over

£650,000



view this property online williamhbrown.co.uk/Property/GDP101261



Property Ref:
GDP101261 - 0003

1. MONEY LAUNDERING REGULATIONS Intending purchasers will be asked to produce identification documentation at a later stage and we would ask for your co-operation in order that there is no delay in agreeing the sale. 2. These particulars do not constitute part or all of an offer or contract. 3. The measurements indicated are supplied for guidance only and as such must be considered incorrect. Potential buyers are advised to recheck measurements before committing to any expense. 4. We have not tested any apparatus, equipment, fixtures or services and it is in the buyers interest to check the working condition of any appliances. 5. Where an EPC, or a Home Report (Scotland only) is held for this property, it is available for inspection at the branch by appointment. If you require a printed version of a Home Report, you will need to pay a reasonable production charge reflecting printing and other costs. 6. We are not able to offer an opinion either written or verbal on the content of these reports and this must be obtained from your legal representative. 7. Whilst we take care in preparing these reports, a buyer should ensure that his/her legal representative confirms as soon as possible all matters relating to title including the extent and boundaries of the property and other important matters before exchange of contracts.

William H Brown is a trading name of Sequence (UK) Limited which is registered in England and Wales under company number 4268443, Registered Office is Cumbria House, 16-20 Hockliffe Street, Leighton Buzzard, Bedfordshire, LU7 1GN. VAT Registration Number is 500 2481 05.

 **william h brown**
Incorporating
**Porter
Glenny**



01708 764418



gideapark@williamhbrown.co.uk



77 Main Road, ROMFORD, Essex, RM2 5EL



williamhbrown.co.uk