



**Kendal, Purfleet-On-Thames RM19 1LL**

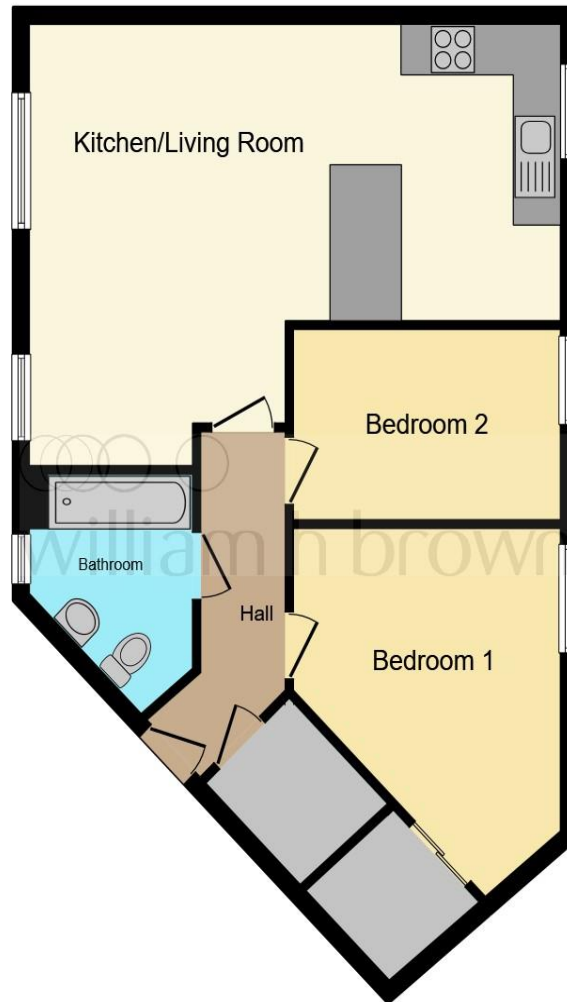


**welcome to**

## **Kendal, Purfleet-On-Thames**

A two bedroom apartment located on a popular modern development approximately 0.5 miles from Purfleet C2C train station. Being on the second floor with views towards the river Thames from the living room the open plan design living area has been enhanced by the addition of a breakfast bar.





### Entrance Hall

### Lounge

22' 2" x 17' 2" narrowing to 11' 6" ( 6.76m x 5.23m narrowing to 3.51m )

### Kitchen

### Bedroom One

11' 9" max x 12' 4" max ( 3.58m max x 3.76m max )

### Bedroom Two

11' 1" x 7' ( 3.38m x 2.13m )

### Bathroom

### Allocated Parking

### Visitors Parking

This floor plan is for illustrative purposes only. It is not drawn to scale. Any measurements, floor areas (including any total floor area), openings and orientation are approximate. No details are guaranteed, they cannot be relied upon for any purpose and they do not form part of any agreement. No liability is taken for any error, omission or misstatement. A party must rely upon its own inspection(s). Powered by [www.focalagent.com](http://www.focalagent.com)

welcome to

## Kendal, Purfleet-On-Thames

- TWO BEDROOM APARTMENT
- VIEWS TOWARDS THE RIVER THAMES
- BEDROOM ONE WITH FITTED WARDROBES
- 0.5 MILES FROM PURFLEET C2C STATION
- ALLOCATED PARKING

Tenure: Leasehold EPC Rating: C

Council Tax Band: C Service Charge: 1923.18

Ground Rent: 300.00

This is a Leasehold property with details as follows; Term of Lease 125 years from 01 Jan 2005.  
Should you require further information please contact the branch. Please Note additional fees could be incurred for items such as Leasehold packs.

offers over

**£220,000**



Please note the marker reflects the postcode not the actual property

**view this property online** [williamhbrown.co.uk/Property/GRA105236](http://williamhbrown.co.uk/Property/GRA105236)



Property Ref:  
GRA105236 - 0003

1. MONEY LAUNDERING REGULATIONS Intending purchasers will be asked to produce identification documentation at a later stage and we would ask for your co-operation in order that there is no delay in agreeing the sale. 2. These particulars do not constitute part or all of an offer or contract. 3. The measurements indicated are supplied for guidance only and as such must be considered incorrect. Potential buyers are advised to recheck measurements before committing to any expense. 4. We have not tested any apparatus, equipment, fixtures or services and it is in the buyers interest to check the working condition of any appliances. 5. Where an EPC, or a Home Report (Scotland only) is held for this property, it is available for inspection at the branch by appointment. If you require a printed version of a Home Report, you will need to pay a reasonable production charge reflecting printing and other costs. 6. We are not able to offer an opinion either written or verbal on the content of these reports and this must be obtained from your legal representative. 7. Whilst we take care in preparing these reports, a buyer should ensure that his/her legal representative confirms as soon as possible all matters relating to title including the extent and boundaries of the property and other important matters before exchange of contracts.

William H Brown is a trading name of Sequence (UK) Limited which is registered in England and Wales under company number 4268443, Registered Office is Cumbria House, 16-20 Hockliffe Street, Leighton Buzzard, Bedfordshire, LU7 1GN. VAT Registration Number is 500 2481 05.

 **william h brown**  
Incorporating  
**Porter  
Glenny**



**01375 374444**



[grays@williamhbrown.co.uk](mailto:grays@williamhbrown.co.uk)



1 Orsett Road, GRAYS, Essex, RM17 5DA



**[williamhbrown.co.uk](http://williamhbrown.co.uk)**