



Southland Terrace, London Road, Purfleet-On-Thames RM19 1RA

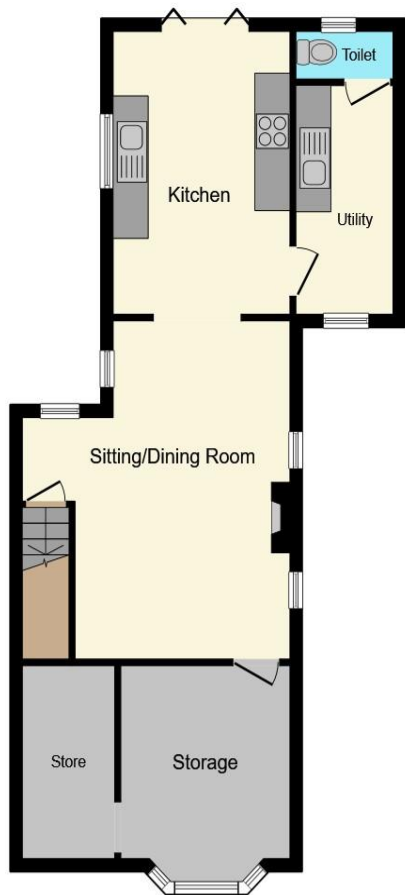
welcome to

Southland Terrace, London Road Purfleet-On-Thames

<https://my.matterport.com/show/?m=K8FB9mVhxFV>

CHAIN FREE, OFF ROAD PARKING & EXTENDED TO THE REAR! Welcome to the market this large FIVE BEDROOM home that offers a variety of living options due to it being spread across 3 floors with multiple entrances!

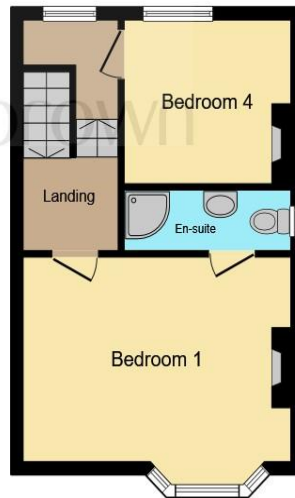




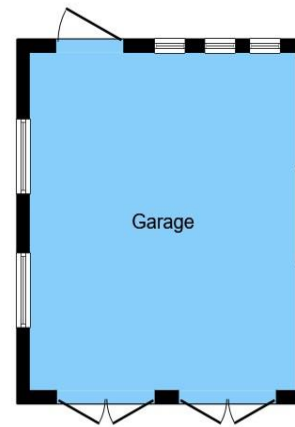
Lower Ground Floor



Ground Floor



First Floor



Garage

Lower Ground Floor

Sitting/Dining Room

15' max x 17' 8" max (4.57m max x 5.38m max)

Kitchen

9' 11" x 14' 9" (3.02m x 4.50m)

Utility Room

5' 4" x 12' 3" (1.63m x 3.73m)

Cloakroom/Wc

Basement

Ground Floor

Entrance Hallway

Living Room/Bedroom 5

12' x 12' 6" into bay (3.66m x 3.81m into bay)

Bedroom Three

9' 1" max x 11' 11" max (2.77m max x 3.63m max)

Bathroom/Wc

Bedroom Two

11' 1" x 9' 8" into recess (3.38m x 2.95m into recess)

First Floor Landing

Bedroom One

12' 8" into bay x 15' 10" into recess (3.86m into bay x 4.83m into recess)

En-Suite

Bedroom Four

9' 7" x 8' 3" (2.92m x 2.51m)

Garage

16' 4" x 18' 4" (4.98m x 5.59m)

Rear Garden

This floor plan is for illustrative purposes only. It is not drawn to scale. Any measurements, floor areas (including any total floor area), openings and orientation are approximate. No details are guaranteed, they cannot be relied upon for any purpose and they do not form part of any agreement. No liability is taken for any error, omission or misstatement. A party must rely upon its own inspection(s). Powered by www.focalagent.com

welcome to

Southland Terrace, London Road Purfleet-On-Thames

- FIVE BEDROOMS PLUS BASEMENT
- TWO RECEPTIONS PLUS UTILITY ROOM
- EXTENDED TO THE REAR
- VARIETY OF LIVING OPTIONS ACROSS THREE FLOORS
- DOUBLE GARAGE

Tenure: Freehold EPC Rating: D

offers in excess of

£475,000



Awaiting Photograph



Please note the marker reflects the postcode not the actual property

view this property online williamhbrown.co.uk/Property/GRA104291



Property Ref:
GRA104291 - 0008

1. MONEY LAUNDERING REGULATIONS Intending purchasers will be asked to produce identification documentation at a later stage and we would ask for your co-operation in order that there is no delay in agreeing the sale. 2. These particulars do not constitute part or all of an offer or contract. 3. The measurements indicated are supplied for guidance only and as such must be considered incorrect. Potential buyers are advised to recheck measurements before committing to any expense. 4. We have not tested any apparatus, equipment, fixtures or services and it is in the buyers interest to check the working condition of any appliances. 5. Where an EPC, or a Home Report (Scotland only) is held for this property, it is available for inspection at the branch by appointment. If you require a printed version of a Home Report, you will need to pay a reasonable production charge reflecting printing and other costs. 6. We are not able to offer an opinion either written or verbal on the content of these reports and this must be obtained from your legal representative. 7. Whilst we take care in preparing these reports, a buyer should ensure that his/her legal representative confirms as soon as possible all matters relating to title including the extent and boundaries of the property and other important matters before exchange of contracts.

William H Brown is a trading name of Sequence (UK) Limited which is registered in England and Wales under company number 4268443, Registered Office is Cumbria House, 16-20 Hockliffe Street, Leighton Buzzard, Bedfordshire, LU7 1GN. VAT Registration Number is 500 2481 05.

 **william h brown**
Incorporating
**Porter
Glenny**



01375 374444



grays@williamhbrown.co.uk



1 Orsett Road, GRAYS, Essex, RM17 5DA



williamhbrown.co.uk