



Commercial

4 Catherine Hill, Frome,
Somerset, BA11 1BY

Rent £12,000 per annum

Ratable Value £8,500.00

(this property is awarded Small Business Rates Relief)

A Pretty 2 storey retail/office space within a prominent site in the heart of Frome.

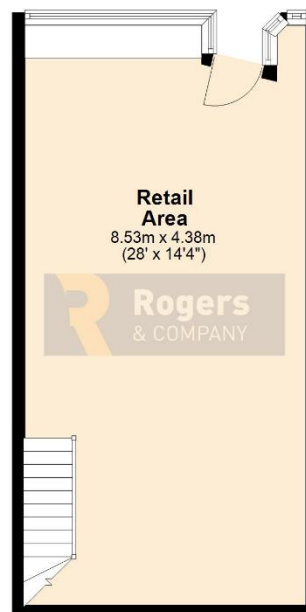
Raised window display leading to open plan and level retail space. the first floor has a kitchenette, WC with storage area and a further beautiful front retail/office space.

Available by way of a new fully internally repairing and insuring lease.

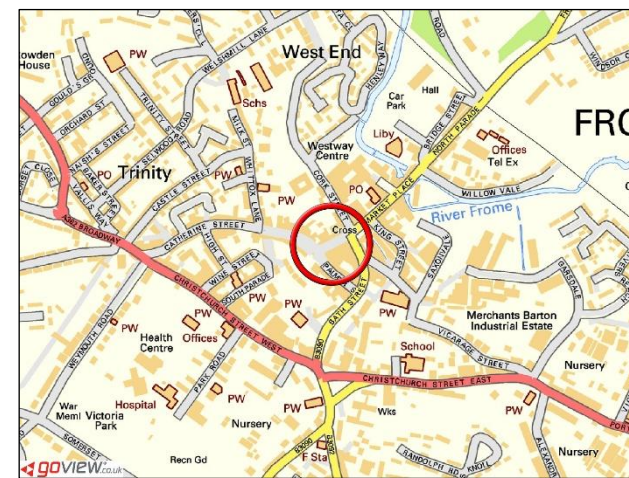
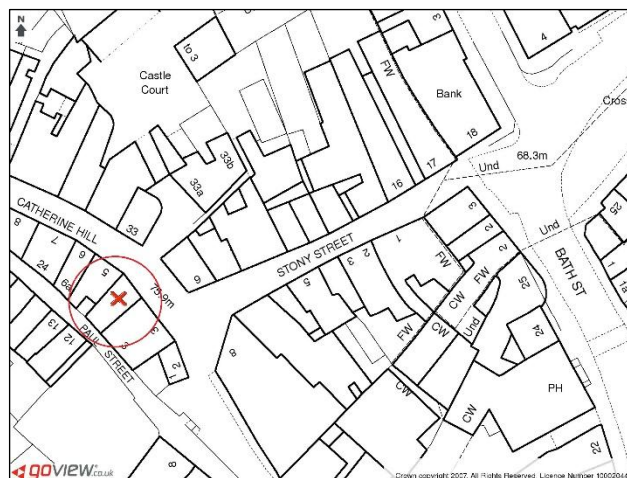
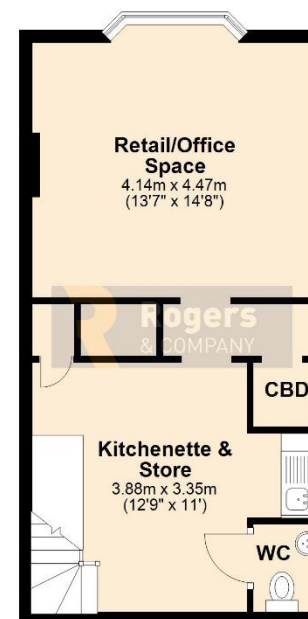
Subject to three month rent deposit and rent payable quarterly in advance.

Proportional legal costs applicable

Ground Floor Catherine Hill



1st Floor Catherine Hill



IMPORTANT: we would like to inform prospective purchasers that these sales particulars have been prepared as a general guide only. A detailed survey has not been carried out, nor the services, appliances and fittings tested. Room sizes should not be relied upon for furnishing purposes and are approximate. If floor plans are included, they are for guidance only and illustration purposes only and may not be to scale. If there are any important matters likely to affect your decision to buy, please contact us before viewing the property.

24 Bath Street, Frome, Somerset, BA11 1DJ

T 01373 454 335

E info@rogersandcompany.co.uk

rogersandcompany.co.uk

