

Commercial
J12 Jenson Court
Frome
BA11 2FQ

Rent £5,500 per annum
Ratable Value - £12,250
(this is not the amount you pay)
You may be entitled to small business
rate relief

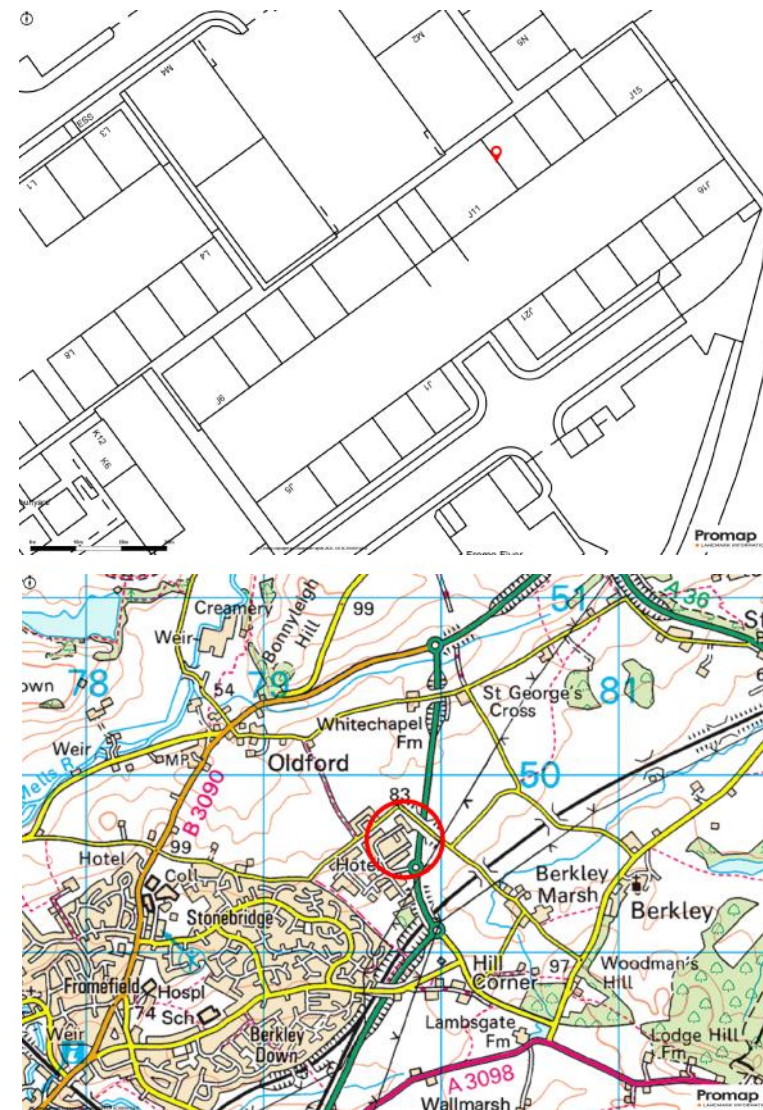
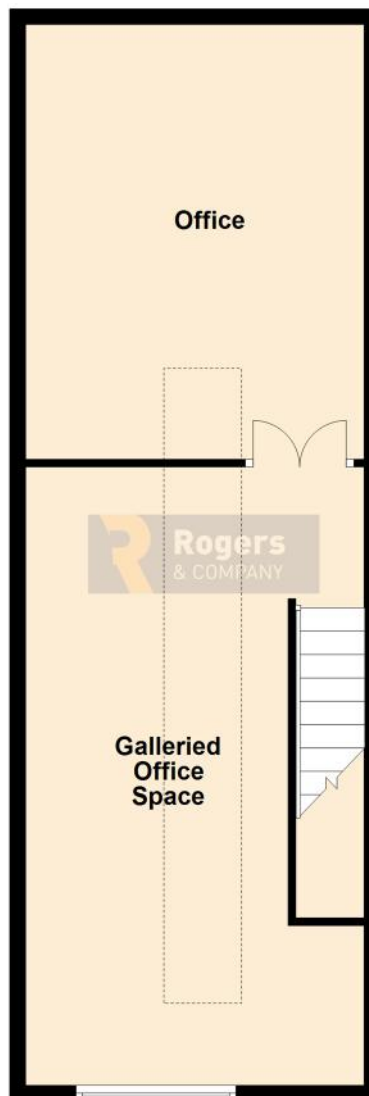
The first floor enclosed mezzanine of this smart, modern industrial unit on Commerce Park. Shared access into the building with the owner. Use of kitchen and WC facilities with just over 600sqft of secure and usable office/storage space. Fairly open minded when it comes to proposed businesses/uses.

Outside there are two parking spaces at the front.

Services will be billed separately.

Available by way of license agreement.

First Floor
Approx. 59.7 sq. metres (642.4 sq. feet)



IMPORTANT: we would like to inform prospective purchasers that these sales particulars have been prepared as a general guide only. A detailed survey has not been carried out, nor the services, appliances and fittings tested. Room sizes should not be relied upon for furnishing purposes and are approximate. If floor plans are included, they are for guidance only and illustration purposes only and may not be to scale. If there are any important matters likely to affect your decision to buy, please contact us before viewing the property.

24 Bath Street, Frome, Somerset, BA11 1DJ
T 01373 454 335
E info@rogersandcompany.co.uk
rogersandcompany.co.uk

