



Old Park Road South, Enfield, EN2 7DB

welcome to
Old Park Road South, Enfield

Barnfields are delighted to offer for sale this spacious and extended four bedroom semi-detached family house in this most sought after cul-de-sac location within walking distance of Enfield Chase Rail Station (Moorgate Line) and Enfield Town Shopping Centre plus Oakwood Underground Station (Piccadilly Line) and good schools are within easy reach.

The property is offered in good condition throughout and must be viewed to be fully appreciated.



Entrance Hall

Via double glazed composite door, wood flooring, panelling to dado height, understairs cupboard, radiator.

Downstairs WC

Low level WC, wall mounted hand basin with tiled splashbacks and cupboards beneath, wood flooring.

Front Reception Room

14' 6" x 12' 7" (4.42m x 3.84m)

Wood flooring, open fireplace with wooden surround and slate hearth, double glazed bay window to front, spotlights, radiator.

Rear Reception Room

14' 4" x 11' 6" (4.37m x 3.51m)

Wood flooring, sliding double glazed doors opening to the conservatory, radiator, spotlights.

Conservatory

11' 4" x 9' 3" (3.45m x 2.82m)

Laminate flooring, double glazed French doors to garden, radiator.

Kitchen / Breakfast Room

24' 10" x 16' 6" (7.57m x 5.03m)

A spacious room with a range of cream fitted wall and base units with granite worktops and splashbacks, sink and drainer, electric induction hob with extractor above and oven beneath, integrated dishwasher, washing machine and microwave, space for an American Style fridge/freezer, slate tiled floor, double glazed windows to rear and side, double glazed door to garden.

First Floor

Landing

Double glazed window to side, wood flooring, panelling to dado height, loft hatch opening to loft storage space.

Bedroom One

14' 5" x 11' 7" (4.39m x 3.53m)

Wood flooring, radiator, double glazed windows to rear, spotlights, door to:-



En-Suite / Wet Room

With fully tiled walls and floor, shower attachment and drainage to floor, low level WC, hand basin with cupboards beneath, double glazed window to rear, chrome heated towel rail.

Bedroom Two

15' x 12' 9" (4.57m x 3.89m)

Wood flooring, double glazed bay window to front, radiator.

Bedroom Three

14' 1" x 7' 7" (4.29m x 2.31m)

Wood flooring, double glazed windows to front and side, radiator.

Bedroom Four

9' 11" x 7' 7" at widest (3.02m x 2.31m at widest)

Wood flooring, double glazed window to front , radiator.

Bathroom

Freestanding bath, step in shower unit, low level WC with concealed cistern, hand basin with cupboards beneath, fully tiled walls and floor, spotlights.

Outside

Rear Garden

A superb landscaped rear garden with patio area to front and pathway leading to side gate, central lawn with pathway leading to a dining area beneath a wooden pergola, mature tree and shrub borders.

Garage

18' 3" x 9' (5.56m x 2.74m)

Single garage with up and over door accessed from the front driveway.

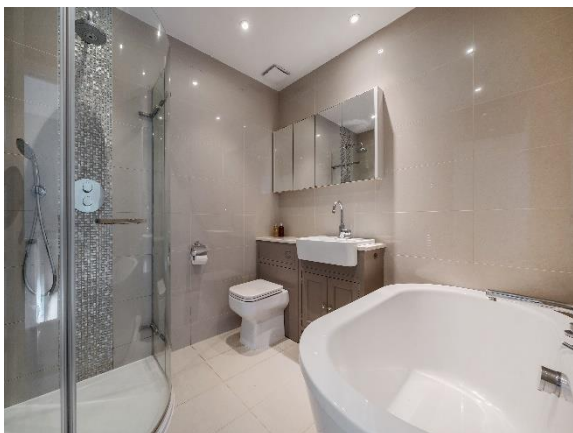
Off-Street Parking To Front

Resin driveway with space for two/three cars and wall mounted EV charger.



view this property online barnfields.co.uk/Property/ENF105374









welcome to

Old Park Road South, Enfield

- Four Bedrooms
- Two Bathrooms
- Two Reception Rooms
- 24ft Kitchen / Breakfast Room
- Conservatory

Tenure: Freehold EPC Rating: C
Council Tax Band: F

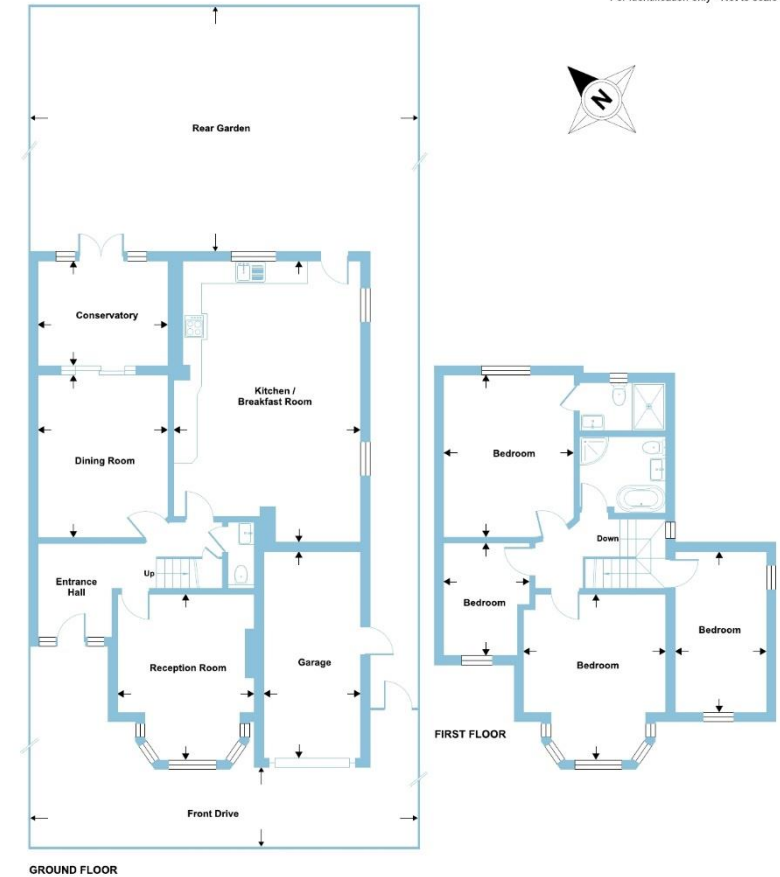
£1,215,000



Please note the marker reflects the postcode not the actual property

Old Park Road South, Enfield, EN2

Approximate Area = 1682 sq ft / 156.2 sq m
Garage = 156 sq ft / 14.4 sq m
Total = 1838 sq ft / 170.6 sq m
For identification only - Not to scale



check out more properties at barnfields.co.uk



Property Ref:
ENF105374 - 0004

1. MONEY LAUNDERING REGULATIONS Intending purchasers will be asked to produce identification documentation at a later stage and we would ask for your co-operation in order that there is no delay in agreeing the sale. 2. These particulars do not constitute part or all of an offer or contract. 3. The measurements indicated are supplied for guidance only and as such must be considered incorrect. Potential buyers are advised to recheck measurements before committing to any expense. 4. We have not tested any apparatus, equipment, fixtures or services and it is in the buyers interest to check the working condition of any appliances. 5. Where an EPC, or a Home Report (Scotland only) is held for this property, it is available for inspection at the branch by appointment. If you require a printed version of a Home Report, you will need to pay a reasonable production charge reflecting printing and other costs. 6. We are not able to offer an opinion either written or verbal on the content of these reports and this must be obtained from your legal representative. 7. Whilst we take care in preparing these reports, a buyer should ensure that his/her legal representative confirms as soon as possible all matters relating to title including the extent and boundaries of the property and other important matters before exchange of contracts.

Barnfields is a trading name of Sequence (UK) Limited which is registered in England and Wales under company number 4268443, Registered Office is Cumbria House, 16-20 Hockliffe Street, Leighton Buzzard, Bedfordshire, LU7 1GN. VAT Registration Number is 500 2481 05.

Floor plan produced in accordance with RICS Property Measurement 2nd Edition, Incorporating International Property Measurement Standards (IPMS2 Residential). © richcom 2025. Produced for Barnard Marcus. REF: 1354435



020 8363 3394



info@barnfields.com



1a Windmill Hill, Enfield, Middlesex, EN2 6SE



barnfields.co.uk