



Lavender Hill, Enfield, EN2 8NP

welcome to

Lavender Hill, Enfield

Spacious two bedroom top floor apartment with south facing garden, situated in this popular residential location, built approximately 17 years ago and within minutes of local shops, Gordon Hill Station (Moorgate Line) and within easy access of Enfield Town with its multiple shopping facilities, the A10 retail parks, the M25 Motorway and greenbelt countryside.

The property has been maintained to a high standard throughout and has many pleasing features.



Entrance Hall

Fitted carpet, double radiator, access to loft, airing cupboard with gas central heating boiler.

Dual Aspect Lounge

13' 7" x 13' 2" (4.14m x 4.01m)

Wood effect floor, double radiator, vaulted ceiling with feature window, sunken spotlights to ceiling, open planned to:-

Kitchen / Breakfast Room

14' 5" x 9' 5" (4.39m x 2.87m)

Comprises a range of gloss white base and wall cupboards with granite worksurface over, single bowl stainless steel sink and drainer, electric hob with electric oven and grill, chrome extractor fan over, tiled splashback, space for fridge-freezer, sunken spotlights to ceiling, wood effect floor, open planned to lounge, vaulted ceiling.

Triple Aspect Bedroom One

13' 3" x 13' 4" max (4.04m x 4.06m max)

Fitted carpet, double radiator, vaulted ceiling with feature window to rear aspect.

Bedroom Two

10' 3" x 6' 10" (3.12m x 2.08m)

Fitted carpet, velux window, double radiator.

Bathroom

Beautifully appointed in a modern white suite, comprising panelled bath with mixer tap and shower attachment, glass shower screen, low flush WC with concealed cistern, vanity basin with tiled splashback, part tiled walls, heated towel rail, tiled floor, Velux window to side aspect, sunken spotlights to ceiling, extractor fan.

Outside

Rear Garden

South facing rear garden, laid to lawn, shared timber shed. Pedestrian access to allocated parking space. Allocated parking space is accessed via Acorn Close.



view this property online barnfields.co.uk/Property/ENF105112





welcome to

Lavender Hill, Enfield

- South Facing Rear Garden
- Large Lounge / Kitchen Diner
- Own Parking Space
- Modern Fitted Bathroom
- Long Lease

Tenure: Leasehold EPC Rating: C

Service Charge: 1200.00

Ground Rent: 250.00

This is a Leasehold property with details as follows; Term of Lease 125 years from 01 Jan 2008. Should you require further information please contact the branch. Please Note additional fees could be incurred for items such as Leasehold packs.

£340,000



Please note the marker reflects the postcode not the actual property



Lavender Hill, Enfield, EN2

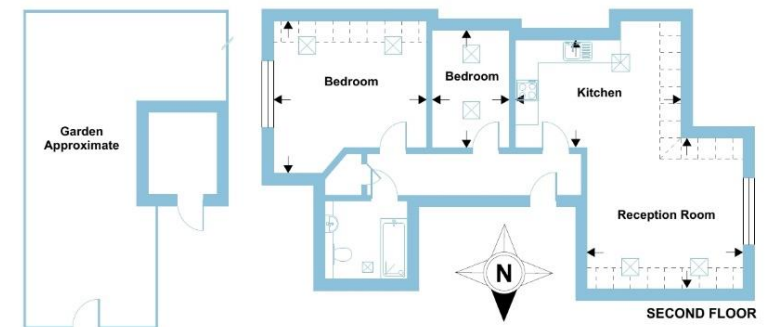
Approximate Area = 613 sq ft / 56.9 sq m

Limited Use Area(s) = 64 sq ft / 5.9 sq m

Outbuilding = 32 sq ft / 3.1 sq m

Total = 709 sq ft / 65.9 sq m

For identification only - Not to scale



check out more properties at [barnfields.co.uk](https://www.barnfields.co.uk)



Property Ref:

ENF105112 - 0003

1. MONEY LAUNDERING REGULATIONS Intending purchasers will be asked to produce identification documentation at a later stage and we would ask for your co-operation in order that there is no delay in agreeing the sale. 2. These particulars do not constitute part or all of an offer or contract. 3. The measurements indicated are supplied for guidance only and as such must be considered incorrect. Potential buyers are advised to recheck measurements before committing to any expense. 4. We have not tested any apparatus, equipment, fixtures or services and it is in the buyers interest to check the working condition of any appliances. 5. Where an EPC, or a Home Report (Scotland only) is held for this property, it is available for inspection at the branch by appointment. If you require a printed version of a Home Report, you will need to pay a reasonable production charge reflecting printing and other costs. 6. We are not able to offer an opinion either written or verbal on the content of these reports and this must be obtained from your legal representative. 7. Whilst we take care in preparing these reports, a buyer should ensure that his/her legal representative confirms as soon as possible all matters relating to title including the extent and boundaries of the property and other important matters before exchange of contracts.

Barnfields is a trading name of Sequence (UK) Limited which is registered in England and Wales under company number 4268443, Registered Office is Cumbria House, 16-20 Hockliffe Street, Leighton Buzzard, Bedfordshire, LU7 1GN. VAT Registration Number is 500 2481 05.

Floor plan produced in accordance with RICS Property Measurement 2nd Edition, Incorporating International Property Measurement Standards (IPMS2 Residential). © nchecom 2025. Produced for Barnard Marcus. REF: 1286573




barnfields



020 8363 3394



info@barnfields.com



1a Windmill Hill, Enfield, Middlesex, EN2 6SE



[barnfields.co.uk](https://www.barnfields.co.uk)