



Vermont Close, Waverley Road, Enfield, EN2 7BF



welcome to

Vermont Close, Waverley Road, Enfield

A superb one bedroom modern first floor purpose built flat, delightfully located in a quiet cul-de-sac, just off Waverley Road, within easy walking distance of Enfield Chase Rail Station (Moorgate Line) and Enfield Town shopping centre.

The cosy well presented accommodation features:-





Communal Entrance Hall

With easy rising staircase to first floor, entryphone.

L Shaped Inner Entrance Hall

Fitted cupboard, deep airing cupboard housing wall mounted combination gas central heating boiler, very deep storage cupboard, radiator, entryphone system.

Lounge

12' 9" into bay x 11' 6" (3.89m into bay x 3.51m)
Fitted carpet, radiator, views, open planned to kitchen.

Kitchen

8' x 6' (2.44m x 1.83m)
Comprehensively fitted in modern units, comprising base units with worktops, matching wall cabinets, inset gas hob unit, built-in oven, plumbing for washing machine, integrated fridge-freezer, vinyl floor, part tiled walls.

Bedroom

10' 2" x 8' 8" (3.10m x 2.64m)
Fitted carpet, radiator, range of mirror wardrobes.

Bathroom / WC

Panelled bath, pedestal wash hand basin, low flush WC (white suite), vinyl floor, radiator, fully tiled walls.

Outside

Pleasant communal gardens and ample parking facilities for guests with one allocated parking space.



view this property online barnfields.co.uk/Property/ENF104542



welcome to

Vermont Close, Waverley Road

- Share Of Freehold
- No Chain
- Bright Lounge With Bay Window
- Allocated Parking Space
- Small Double Bedroom

Tenure: Leasehold EPC Rating: C

This is a Leasehold property. We are awaiting further details about the Term of the lease. For further information please contact the branch. Please note additional fees could be incurred for items such as Leasehold packs.

£275,000



Please note the marker reflects the postcode not the actual property

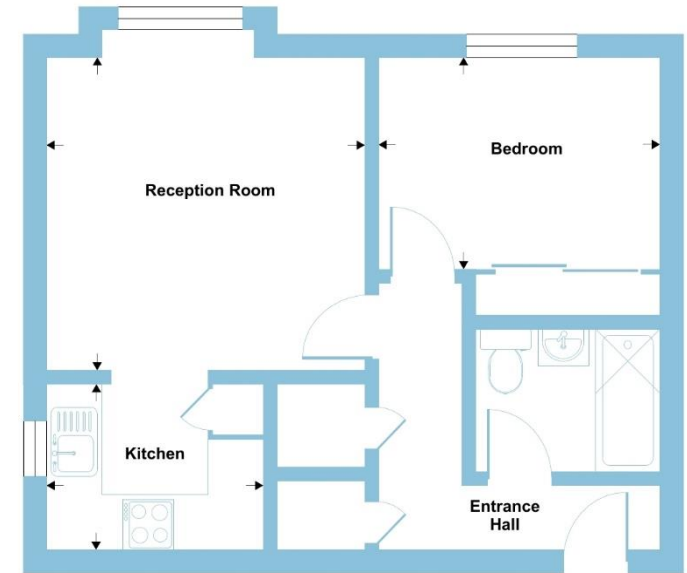
check out more properties at [barnfields.co.uk](https://www.barnfields.co.uk)



Property Ref:
ENF104542 - 0003

1. MONEY LAUNDERING REGULATIONS Intending purchasers will be asked to produce identification documentation at a later stage and we would ask for your co-operation in order that there is no delay in agreeing the sale. 2. These particulars do not constitute part or all of an offer or contract. 3. The measurements indicated are supplied for guidance only and as such must be considered incorrect. Potential buyers are advised to recheck measurements before committing to any expense. 4. We have not tested any apparatus, equipment, fixtures or services and it is in the buyers interest to check the working condition of any appliances. 5. Where an EPC, or a Home Report (Scotland only) is held for this property, it is available for inspection at the branch by appointment. If you require a printed version of a Home Report, you will need to pay a reasonable production charge reflecting printing and other costs. 6. We are not able to offer an opinion either written or verbal on the content of these reports and this must be obtained from your legal representative. 7. Whilst we take care in preparing these reports, a buyer should ensure that his/her legal representative confirms as soon as possible all matters relating to title including the extent and boundaries of the property and other important matters before exchange of contracts.

Barnfields is a trading name of Sequence (UK) Limited which is registered in England and Wales under company number 4268443, Registered Office is Cumbria House, 16-20 Hockliffe Street, Leighton Buzzard, Bedfordshire, LU7 1GN. VAT Registration Number is 500 2481 05.



FIRST FLOOR



Floor plan produced in accordance with RICS Property Measurement Standards incorporating International Property Measurement Standards (IPMS2 Residential). © richcom 2024. Produced for Barnard Marcus. REF: 1163717



020 8363 3394



info@barnfields.com



1a Windmill Hill, Enfield, Middlesex, EN2 6SE



[barnfields.co.uk](https://www.barnfields.co.uk)