



Potash House, Canning Square, Enfield, EN1 4BP

welcome to

Potash House, Canning Square, Enfield

Barnfields are pleased to offer for sale this spacious one bedroom top floor apartment with magnificent views of the London skyline (best viewed in person) and a westerly facing terrace. Built less than 10 years ago, the property offers modern living space in a convenient location close to good bus routes, the A10 and the M25 motorway plus just a short walk from the Historic Forty Hall Estate and Country Park and David Lloyd Sports Club.





Stairs Lead Up To
3rd (Top Floor).

Flat Door
Opens to:-

Hallway
Wood flooring, large double glazed window to side, three storage cupboards one housing combined washer dryer, radiator, wall mounted entryphone system.

Bedroom
14' 3" x 9' 11" at widest (4.34m x 3.02m at widest)
A spacious room with fitted carpet, double glazed window to rear, radiator, built-in wardrobe.

Bathroom
Panelled bath with shower over and glass screen, low level WC with concealed cistern, hand basin, large inset mirror, fully tiled walls and floor, chrome heated towel rail.

Lounge / Diner
21' 1" at widest x 15' 8" at widest (6.43m at widest x 4.78m at widest)

Kitchen Area
Range of wall and base units with toning worktops, stainless steel sink and drainer, built-in fridge/freezer, plumbing for dishwasher, built-in oven with ceramic induction hob, stainless steel splashback and extractor hood above, tiled splashbacks, double glazed window to side, wood flooring.

Lounge Area
Continued wood flooring, radiator, spotlights, far reaching views, double glazed windows and door to:-

Terrace
A decked westerly facing terrace with magnificent far reaching views over the London skyline (best viewed in person).



view this property online barnfields.co.uk/Property/ENF104508





welcome to

Potash House, Canning Square, Enfield

- Views Of London Skyline
- Spacious Bedroom
- Lounge / Diner
- West Facing Terrace
- Top Floor

Tenure: Leasehold EPC Rating: B

This is a Leasehold property with details as follows; Term of Lease 99 years from 25 Jun 2015. Should you require further information please contact the branch. Please Note additional fees could be incurred for items such as Leasehold packs.

£274,000

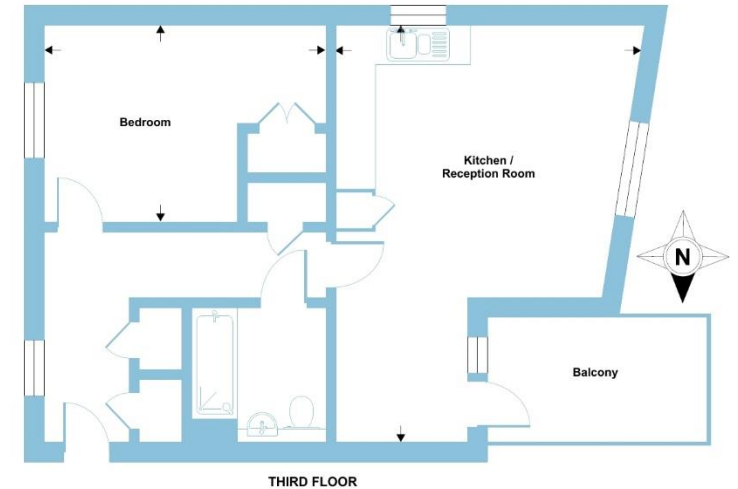


Please note the marker reflects the postcode not the actual property



Canning Square, Enfield, EN1

Approximate Area = 564 sq ft / 52.4 sq m
For identification only - Not to scale



check out more properties at [barnfields.co.uk](https://www.barnfields.co.uk)



Property Ref:
ENF104508 - 0005

1. MONEY LAUNDERING REGULATIONS Intending purchasers will be asked to produce identification documentation at a later stage and we would ask for your co-operation in order that there is no delay in agreeing the sale. 2. These particulars do not constitute part or all of an offer or contract. 3. The measurements indicated are supplied for guidance only and as such must be considered incorrect. Potential buyers are advised to recheck measurements before committing to any expense. 4. We have not tested any apparatus, equipment, fixtures or services and it is in the buyers interest to check the working condition of any appliances. 5. Where an EPC, or a Home Report (Scotland only) is held for this property, it is available for inspection at the branch by appointment. If you require a printed version of a Home Report, you will need to pay a reasonable production charge reflecting printing and other costs. 6. We are not able to offer an opinion either written or verbal on the content of these reports and this must be obtained from your legal representative. 7. Whilst we take care in preparing these reports, a buyer should ensure that his/her legal representative confirms as soon as possible all matters relating to title including the extent and boundaries of the property and other important matters before exchange of contracts.

Barnfields is a trading name of Sequence (UK) Limited which is registered in England and Wales under company number 4268443, Registered Office is Cumbria House, 16-20 Hockliffe Street, Leighton Buzzard, Bedfordshire, LU7 1GN. VAT Registration Number is 500 2481 05.

 Certified Property Measurer
Floor plan produced in accordance with RICS Property Measurement Standards incorporating International Property Measurement Standards (IPMS2 Residential). © richcom 2022. Produced for Barnard Marcus. REF: 1149572 


barnfields



020 8363 3394



info@barnfields.com



1a Windmill Hill, Enfield, Middlesex, EN2 6SE



[barnfields.co.uk](https://www.barnfields.co.uk)