



Austen Court, Winchmore Hill Road, London, N21 1QN

welcome to

Austen Court, Winchmore Hill Road, London

A superb McCarthy and Stone built, first floor retirement apartment in this most sought after development close to Southgate shopping centre and Underground Station (Piccadilly Line) and adjacent to Oakwood Park with gated access alongside the development.

The particularly well presented apartment features:-





Entrance Hall

Fitted carpet, deep storage cupboard.

Lounge

14' x 12' 2" (4.27m x 3.71m)

Fitted carpet, views over gardens towards Oakwood Park, electric radiator, double doors to kitchen.

Kitchen

8' 7" x 7' 9" (2.62m x 2.36m)

Views over garden, comprehensively fitted comprising base units with worktops, inset stainless steel sink unit, inset ceramic hob unit, built-in double oven, vinyl floor.

Bedroom

17' 6" x 8' 10" (5.33m x 2.69m)

Fitted carpet, built-in three door mirror wardrobes, electric radiator, views over garden.

Shower Room / WC

Walk-in shower cubicle, wash hand basin with cupboard under, low flush WC (modern white suite), vinyl floor, tiled walls.

Outside

Ample parking facilities for residents and guests. Beautifully tended gardens with seating area, various shrubs and plants, double door access from communal lounge.



view this property online barnfields.co.uk/Property/ENF104429



welcome to

Austen Court, Winchmore Hill Road, London

- Very Spacious Double Bedroom
- Good Sized Attractive Lounge With Views Over Gardens
- Fitted Kitchen
- Modern Shower Room / WC
- Large Communal Lounge And Communal Laundry Room

Tenure: Leasehold EPC Rating: B

This is a Leasehold property with details as follows; Term of Lease 125 years from 01 Mar 2007. Should you require further information please contact the branch. Please Note additional fees could be incurred for items such as Leasehold packs.

£225,000



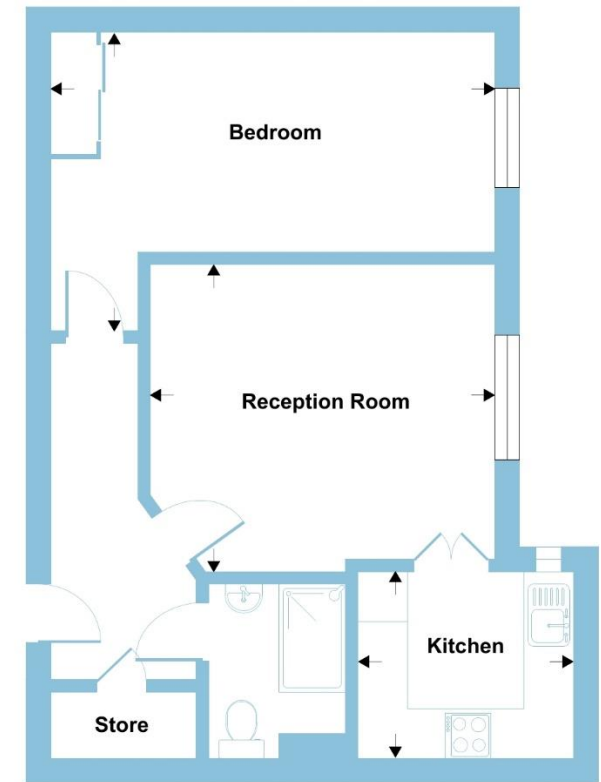
Please note the marker reflects the postcode not the actual property



Winchmore Hill Road, London, N21

Approximate Area = 543 sq ft / 50.4 sq m

For identification only - Not to scale



FIRST FLOOR



Floor plan produced in accordance with RICS Property Measurement Standards incorporating International Property Measurement Standards (IPMS Residential). © nichcom 2024. Produced for Barnard Marcus. REF: 1137602



check out more properties at [barnfields.co.uk](https://www.barnfields.co.uk)



Property Ref:
ENF104429 - 0003

1. MONEY LAUNDERING REGULATIONS Intending purchasers will be asked to produce identification documentation at a later stage and we would ask for your co-operation in order that there is no delay in agreeing the sale. 2. These particulars do not constitute part or all of an offer or contract. 3. The measurements indicated are supplied for guidance only and as such must be considered incorrect. Potential buyers are advised to recheck measurements before committing to any expense. 4. We have not tested any apparatus, equipment, fixtures or services and it is in the buyers interest to check the working condition of any appliances. 5. Where an EPC, or a Home Report (Scotland only) is held for this property, it is available for inspection at the branch by appointment. If you require a printed version of a Home Report, you will need to pay a reasonable production charge reflecting printing and other costs. 6. We are not able to offer an opinion either written or verbal on the content of these reports and this must be obtained from your legal representative. 7. Whilst we take care in preparing these reports, a buyer should ensure that his/her legal representative confirms as soon as possible all matters relating to title including the extent and boundaries of the property and other important matters before exchange of contracts.

Barnfields is a trading name of Sequence (UK) Limited which is registered in England and Wales under company number 4268443, Registered Office is Cumbria House, 16-20 Hockliffe Street, Leighton Buzzard, Bedfordshire, LU7 1GN. VAT Registration Number is 500 2481 05.



020 8363 3394



info@barnfields.com



1a Windmill Hill, Enfield, Middlesex, EN2 6SE



[barnfields.co.uk](https://www.barnfields.co.uk)