



Blake Court, Newsholme Drive, London, N21 1SQ

welcome to
Blake Court, Newsholme Drive, London

Barnfields are delighted to offer this spacious two bedroom, ground floor retirement apartment in a secure gated development adjacent to Enfield Golf Course, close to Sainsburys Supermarket and with bus services into Enfield Town and Winchmore Hill Centre.

The development boasts an excellent restaurant, communal dining room, lounge, laundry services and social activities for residents to enjoy. There is an on-site Duty Manager 24 hours per day.



Entrance Hall

Fitted carpet, radiator, storage cupboard, emergency pull cord, coving to ceiling, airing cupboard, heating controls.

Lounge

16' 2" x 12' 7" (4.93m x 3.84m)

Fitted carpet, feature fireplace with electric fire, coving to ceiling, emergency pull cord, TV/telephone points, radiator, door to kitchen, two double glazed windows overlooking communal gardens.

Kitchen / Diner

10' 1" x 8' 2" (3.07m x 2.49m)

Comprising wall and base units with contrasting worksurfaces, inset one and a half bowl resin sink and drainer, integrated fridge, freezer, washing machine, 4 ring electric hob, electric oven with extractor fan over, emergency pull cord, radiator, double glazed window to rear.

Bedroom One

12' 5" x 10' 1" (3.78m x 3.07m)

Fitted carpet, coving to ceiling, radiator, emergency pull cord, door to dressing room, double glazed window to front overlooking communal garden.

Dressing Area

6' 8" max x 6' 2" (2.03m max x 1.88m)

Fitted carpet, wardrobes and shelving.

Bedroom Two

11' 5" x 9' 5" (3.48m x 2.87m)

Fitted carpet, coving to ceiling, radiator, emergency pull cord, double glazed window to front overlooking communal garden.

Bathroom

8' 3" x 8' (2.51m x 2.44m)

Comprising panelled bath with shower attachment, low flush WC, wash hand basin, half tiled walls, radiator, extractor fan, emergency pull cord.

Communal Areas

The property enjoys a communal lounge, dining room and restaurant.

Outside

Communal Gardens

Beautifully maintained communal gardens surround the block. There is ample parking for residents and guests.



view this property online barnfields.co.uk/Property/ENF104458





welcome to

Blake Court, Newsholme Drive, London

- No Chain
- Two Bedrooms
- Dressing Area From Master
- Parking Facilities For Residents And Guests
- Communal Dining Room, Lounge And Garden
- Over 65's Only

Tenure: Leasehold EPC Rating: C

£300,000



Please note the marker reflects the postcode not the actual property

check out more properties at [barnfields.co.uk](https://www.barnfields.co.uk)

This is a Leasehold property. We are awaiting further details about the Term of the lease. For further information please contact the branch. Please note additional fees could be incurred for items such as Leasehold packs.



Property Ref:
ENF104458-0002

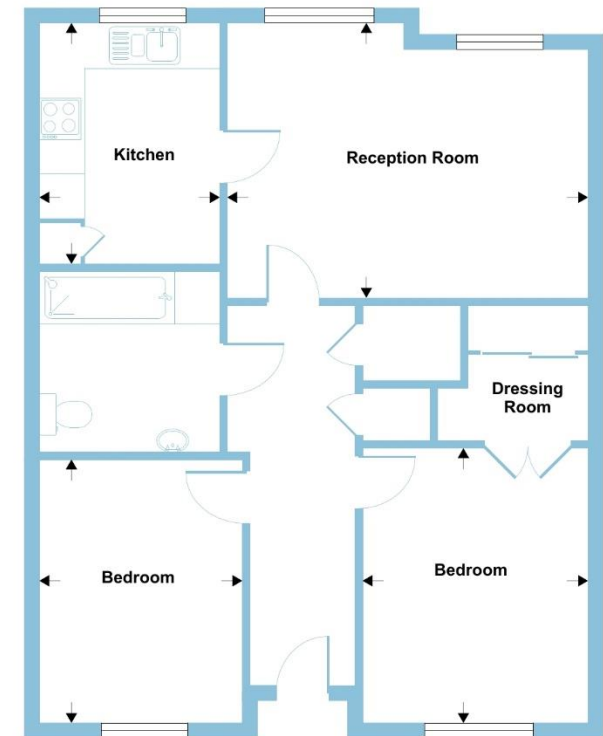
1. MONEY LAUNDERING REGULATIONS Intending purchasers will be asked to produce identification documentation at a later stage and we would ask for your co-operation in order that there is no delay in agreeing the sale. 2. These particulars do not constitute part or all of an offer or contract. 3. The measurements indicated are supplied for guidance only and as such must be considered incorrect. Potential buyers are advised to recheck measurements before committing to any expense. 4. We have not tested any apparatus, equipment, fixtures or services and it is in the buyers interest to check the working condition of any appliances. 5. Where an EPC, or a Home Report (Scotland only) is held for this property, it is available for inspection at the branch by appointment. If you require a printed version of a Home Report, you will need to pay a reasonable production charge reflecting printing and other costs. 6. We are not able to offer an opinion either written or verbal on the content of these reports and this must be obtained from your legal representative. 7. Whilst we take care in preparing these reports, a buyer should ensure that his/her legal representative confirms as soon as possible all matters relating to title including the extent and boundaries of the property and other important matters before exchange of contracts.

Barnfields is a trading name of Sequence (UK) Limited which is registered in England and Wales under company number 4268443, Registered Office is Cumbria House, 16-20 Hockliffe Street, Leighton Buzzard, Bedfordshire, LU7 1GN. VAT Registration Number is 500 2481 05.

Newsholme Drive, London, N21

Approximate Area = 735 sq ft / 68.2 sq m

For identification only - Not to scale



GROUND FLOOR

 Certified Property Measurer
Floor plan produced in accordance with RICS Property Measurement Standards incorporating International Property Measurement Standards (IPMS2 Residential). © rics.com 2023. Produced for Barnard Marcus. REF: 1053061 





020 8363 3394



info@barnfields.com



1a Windmill Hill, Enfield, Middlesex, EN2 6SE



[barnfields.co.uk](https://www.barnfields.co.uk)