



Holly Tree Lodge, The Ridgeway, Enfield, EN2 8QT

welcome to

Holly Tree Lodge, The Ridgeway, Enfield

A beautifully appointed two bedroom, two bathroom ground floor apartment situated in this modern block built approximately 30 years ago, within close proximity of Gordon Hill Rail Station (Moorgate Line) and local shops and within easy access of Enfield Town with its multiple shopping facilities, parks, schools and transport hub.



Entrance Hall

Wood laminate floor, double radiator, coving to ceiling, video entryphone system, storage cupboards.

Lounge

18' 3" x 13' (5.56m x 3.96m)

Wood laminate floor, coving to ceiling, radiator, door to kitchen.

Kitchen

11' 9" x 6' 10" (3.58m x 2.08m)

Fitted in a range of light grey units, comprising modern base and wall units with a single bowl stainless steel sink inset to worksurface, gas hob with extractor fan over, integrated electric oven and grill, plumbing for washing machine, integrated fridge-freezer, larder cupboard, ceramic tiled floor, coving to ceiling, sunken spotlights to ceiling, gas central heating boiler, window to side.

Bedroom One

13' 8" x 9' 9" (4.17m x 2.97m)

Fitted carpet, coving to ceiling, radiator, door to en-suite shower room.

En-Suite Shower Room

Comprising vanity wash hand basin with cupboards under, low flush WC with concealed cistern, extractor fan, ceramic tiled floor, radiator, large shower cubicle with sliding glass door, part tiled walls.

Bedroom Two

11' 4" x 8' 10" (3.45m x 2.69m)

Fitted carpet, radiator, coving to ceiling.

Family Bathroom

Comprises vanity wash hand basin with cupboards under, mixer tap over, low flush WC, panelled bath with mixer tap and shower attachment, glass shower screen, part fully tiled walls, ceramic tiled floor, radiator, extractor fan.

Outside

Communal gardens to front are laid to lawn with mature trees and attractive brick retaining wall, allocated parking space to rear.



view this property online barnfields.co.uk/Property/ENF104331







welcome to

Holly Tree Lodge, The Ridgeway, Enfield

- Large Lounge
- En-Suite To Master Bedroom
- Chain Free
- Allocated Parking Space
- Video Entryphone System

Tenure: Leasehold EPC Rating: C

This is a Leasehold property with details as follows; Term of Lease 125 years from 25 Dec 1993. Should you require further information please contact the branch. Please Note additional fees could be incurred for items such as Leasehold packs.

£360,000



Please note the marker reflects the postcode not the actual property

check out more properties at [barnfields.co.uk](https://www.barnfields.co.uk)



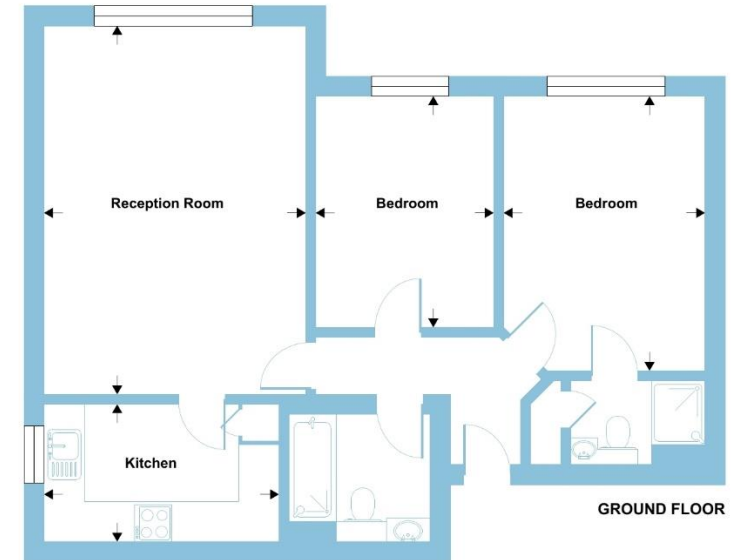
Property Ref:
ENF104331 - 0003

1. MONEY LAUNDERING REGULATIONS Intending purchasers will be asked to produce identification documentation at a later stage and we would ask for your co-operation in order that there is no delay in agreeing the sale. 2. These particulars do not constitute part or all of an offer or contract. 3. The measurements indicated are supplied for guidance only and as such must be considered incorrect. Potential buyers are advised to recheck measurements before committing to any expense. 4. We have not tested any apparatus, equipment, fixtures or services and it is in the buyers interest to check the working condition of any appliances. 5. Where an EPC, or a Home Report (Scotland only) is held for this property, it is available for inspection at the branch by appointment. If you require a printed version of a Home Report, you will need to pay a reasonable production charge reflecting printing and other costs. 6. We are not able to offer an opinion either written or verbal on the content of these reports and this must be obtained from your legal representative. 7. Whilst we take care in preparing these reports, a buyer should ensure that his/her legal representative confirms as soon as possible all matters relating to title including the extent and boundaries of the property and other important matters before exchange of contracts.

Barnfields is a trading name of Sequence (UK) Limited which is registered in England and Wales under company number 4268443, Registered Office is Cumbria House, 16-20 Hockliffe Street, Leighton Buzzard, Bedfordshire, LU7 1GN. VAT Registration Number is 500 2481 05.

Holly Tree Lodge, The Ridgeway, Enfield, EN2

Approximate Area = 720 sq ft / 66.8 sq m
For identification only - Not to scale



Floor plan produced in accordance with RICS Property Measurement Standards incorporating International Property Measurement Standards (IPMS2 Residential). © richiecom 2024. Produced for Barnard Marcus. REF: 1111381




barnfields



020 8363 3394



info@barnfields.com



1a Windmill Hill, Enfield, Middlesex, EN2 6SE



[barnfields.co.uk](https://www.barnfields.co.uk)