



Woodridge Close, Enfield, EN2 8HJ

welcome to
Woodridge Close, Enfield

An opportunity to acquire this bright and spacious, first floor two bedroom apartment in this desirable development off The Ridgeway, conveniently located for Enfield Town multiple shopping centre and Gordon Hill Rail Station (Moorgate Line).

The accommodation features:-





Entrance Hall

Fitted carpet, electric radiator, double airing cupboard/storage cupboard housing hot water tank with immersion heater.

Lounge

17' x 10' 3" (5.18m x 3.12m)
Fitted carpet, electric radiator.

Kitchen

7' 2" x 6' 8" (2.18m x 2.03m)
Comprehensively fitted comprising base units with worktops, matching wall cabinets, inset sink unit, inset ceramic hob with fume extractor hood over, built-in oven, built-in fridge-freezer, ceramic tiled floor.



Bedroom One

13' 3" x 11' 5" (4.04m x 3.48m)
Fitted carpet, electric radiator, double built-in wardrobe cupboard.

En-Suite Shower Room / WC

Shower cubicle, pedestal wash hand basin, low flush WC (white suite), fully tiled walls, warm air heater.

Bedroom Two

10' 6" x 7' 9" (3.20m x 2.36m)
Fitted carpet.

Guests Bathroom / WC

Panelled bath, pedestal wash hand basin, low flush WC, fully tiled walls, warm air heater.

Outside

Communal Areas

Pleasant communal areas and gardens surround the block. There are ample parking facilities for residents and guests.



view this property online barnfields.co.uk/Property/ENF104091





welcome to

Woodridge Close, Enfield

- Spacious Attractive Lounge
- Fitted Kitchen
- Two Bedrooms
- Two Bathrooms (One En-Suite)
- No Chain

Tenure: Leasehold EPC Rating: C

This is a Leasehold property. We are awaiting further details about the Term of the lease. For further information please contact the branch. Please note additional fees could be incurred for items such as Leasehold packs.

£315,000



Please note the marker reflects the postcode not the actual property

check out more properties at [barnfields.co.uk](https://www.barnfields.co.uk)



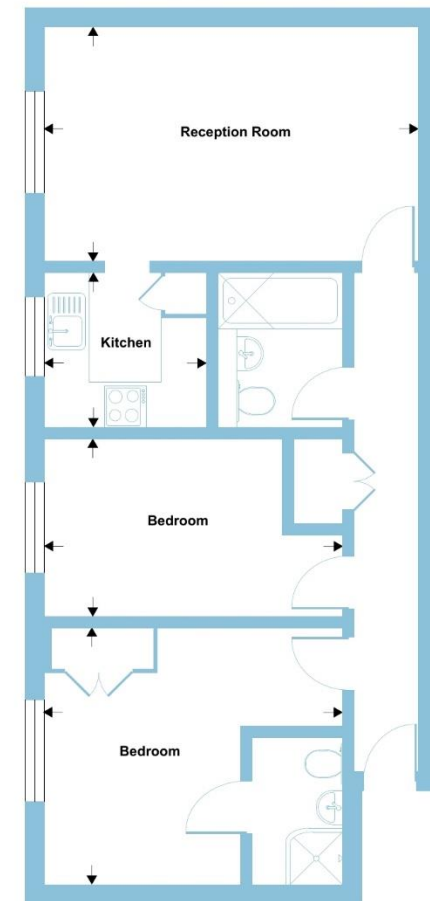
Property Ref:
ENF104091 - 0004

1. MONEY LAUNDERING REGULATIONS Intending purchasers will be asked to produce identification documentation at a later stage and we would ask for your co-operation in order that there is no delay in agreeing the sale. 2. These particulars do not constitute part or all of an offer or contract. 3. The measurements indicated are supplied for guidance only and as such must be considered incorrect. Potential buyers are advised to recheck measurements before committing to any expense. 4. We have not tested any apparatus, equipment, fixtures or services and it is in the buyers interest to check the working condition of any appliances. 5. Where an EPC, or a Home Report (Scotland only) is held for this property, it is available for inspection at the branch by appointment. If you require a printed version of a Home Report, you will need to pay a reasonable production charge reflecting printing and other costs. 6. We are not able to offer an opinion either written or verbal on the content of these reports and this must be obtained from your legal representative. 7. Whilst we take care in preparing these reports, a buyer should ensure that his/her legal representative confirms as soon as possible all matters relating to title including the extent and boundaries of the property and other important matters before exchange of contracts.

Barnfields is a trading name of Sequence (UK) Limited which is registered in England and Wales under company number 4268443, Registered Office is Cumbria House, 16-20 Hockliffe Street, Leighton Buzzard, Bedfordshire, LU7 1GN. VAT Registration Number is 500 2481 05.

Woodridge Close, EN2

Approximate Area = 608 sq ft / 56.4 sq m
For identification only - Not to scale



FIRST FLOOR

Floor plan produced in accordance with RICS Property Measurement Standards incorporating International Property Measurement Standards (IPMS2 Residential). © nichewcom 2024. Produced for Barnard Marcus. REF: 1096999



020 8363 3394



info@barnfields.com



1a Windmill Hill, Enfield, Middlesex, EN2 6SE



[barnfields.co.uk](https://www.barnfields.co.uk)