



The Ash Bucks Hill, Kings Langley

In Excess of £950,000

proffitt
& holt





The Ash Bucks Hill

Kings Langley, Kings Langley

Proffitt and Holt are delighted to offer to the market this excellent example of a three bedroom detached family home located in one of the most sought after villages in Hertfordshire, Chipperfield. The property is well proportioned and is well presented throughout and boasts ample parking, picturesque and far reaching views and a generous games room (currently housing a full size table tennis table). EPC-EER: D Council Tax Band: G

Chipperfield is one of the most sought-after villages in south west Hertfordshire, with over 100 acres of woodland and a reputable JMI school, which is highlighted for its excellent results. There are many active sports and social groups, four popular pubs and a busy café/bistro. For a more comprehensive range of shopping facilities, the larger towns of Watford and Hemel Hempstead are within seven and six miles drive respectively. For the commuter, Kings Langley mainline station provides a service into Euston (approximately 30 minutes), whilst Junction 20 of the M25 is approximately 3.5 miles away. Tenure: Freehold

EPC Energy Efficiency Rating: D

EPC Environmental Impact Rating: D





Broadband speeds available

Ultrafast

1600Mb

Average download speed of the fastest package at this postcode*

Suitable for**

Web & social

Flawless video calls

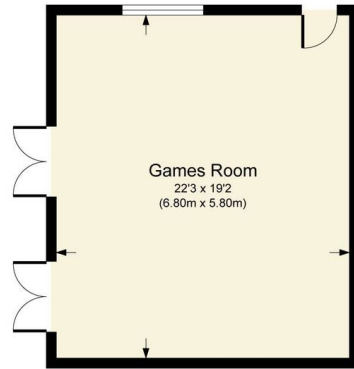
4K streaming

Online gaming

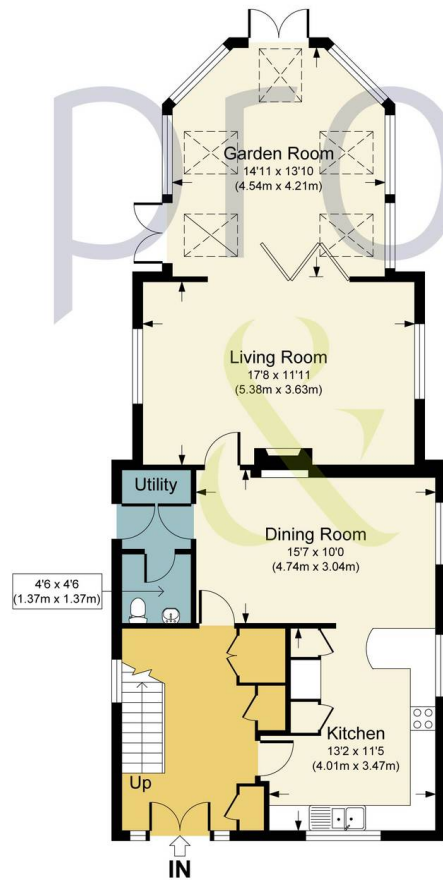
[Compare broadband deals](#)



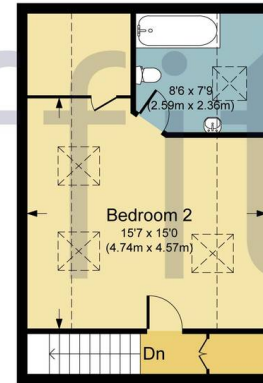




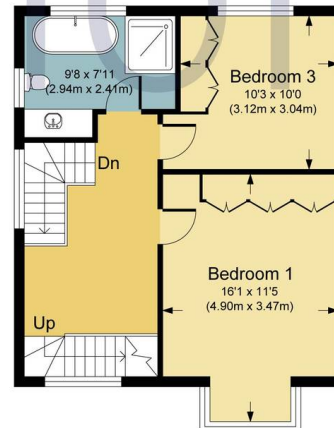
Restricted Head Height



Ground Floor



Second Floor



First Floor

THE ASH, WD4

APPROX. GROSS INTERNAL FLOOR AREA 2171.18 SQ FT / 201.71 SQ M. INC. SHED

PHOLTKL: THIS IMAGE IS ILLUSTRATIVE ONLY - NOT TO SCALE. COPYRIGHT: THE IMAGE TAILOR LTD. 2023.





Proffitt & Holt

Proffitt & Holt, 41 High Street - WD4 8AB

01923 270333 • kings@proffitt-holt.co.uk • www.proffitt-holt.co.uk/

