



Plot 2, 16 Hempstead Road, Kings Langley
£575,000

proffitt
& holt





Plot 2, 16 Hempstead Road

Kings Langley, Kings Langley

The accommodation is set over three floors with plot two comprising (to the ground floor) an open plan kitchen/breakfast room with doors out to the rear garden and a downstairs wc. To the first floor there is a generous living room, shower room and stairs rising to the top floor housing two well-proportioned bedrooms (one with en suite shower room).

Tenure: Freehold

EPC Energy Efficiency Rating: B

EPC Environmental Impact Rating:





Broadband speeds available

Ultrafast

1600Mb

Average download speed of the fastest package at this postcode*

Suitable for**

Web & social

Flawless video calls

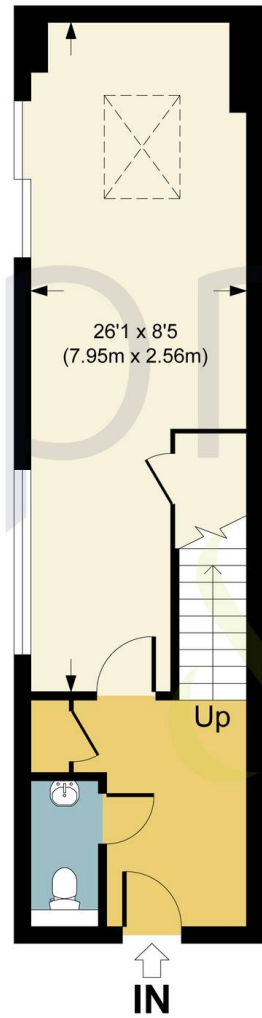
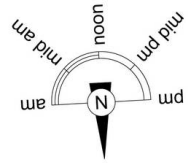
4K streaming

Online gaming

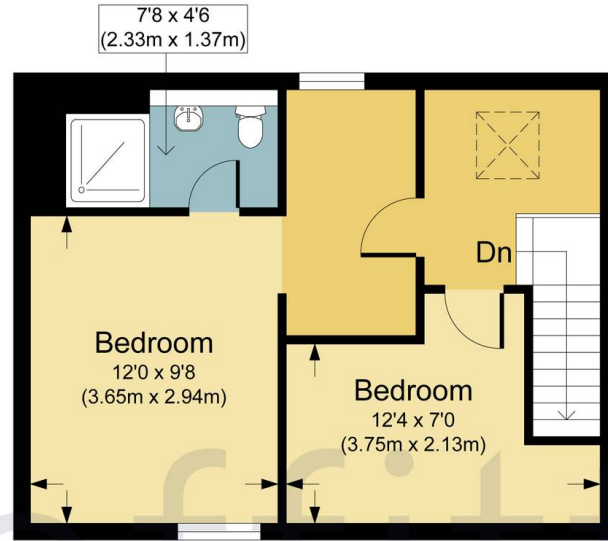
[Compare broadband deals](#)



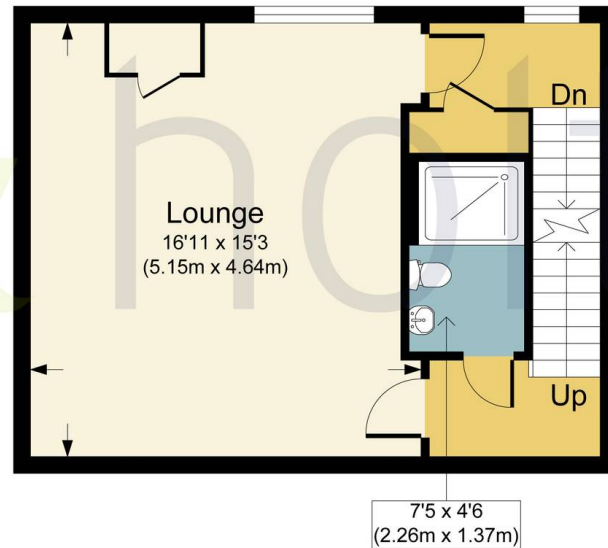




Ground Floor



Second Floor



First Floor

PLOT 2, 16 HEMPSTEAD ROAD WD4

APPROX. GROSS INTERNAL FLOOR AREA 1046.57 SQ FT / 97.23 SQ M.
PHOLTKL: THIS IMAGE IS ILLUSTRATIVE ONLY - NOT TO SCALE. COPYRIGHT:THE IMAGE TAILOR LTD. 2024.





Proffitt & Holt

Proffitt & Holt, 41 High Street - WD4 8AB

01923 270333 • kings@proffitt-holt.co.uk • www.proffitt-holt.co.uk/

