

**£335,000**  
**66 Dore Avenue**  
PO16 8DW

## PROPERTY SUMMARY

Offering a generous corner plot, we are pleased to welcome this three bedroom end terraced home with ample parking and a detached garage. Situated on the hillslopes with views towards the Spinnaker Tower, the property offers good family accommodation. The property provides a spacious lounge, a dining area, a conservatory, three good size bedrooms and a modern refitted bathroom. Outside, the rear garden is staggered and low maintenance, with rear/side access as well a pretty front garden. Please call our Portchester Office to arrange a viewing!





## **PORCH**

**LIVING ROOM** 13' 07" x 12' 03" (4.14m x 3.73m)

**DINING ROOM** 10' 04" x 8' 2" (3.15m x 2.49m)

**KITCHEN** 11' 0" x 7' 03" (3.35m x 2.21m)

**CONSERVATORY** 14' 11" x 5' 10" (4.55m x 1.78m)

**BEDROOM 1** 15' 5" x 9' 3" (4.7m x 2.82m)

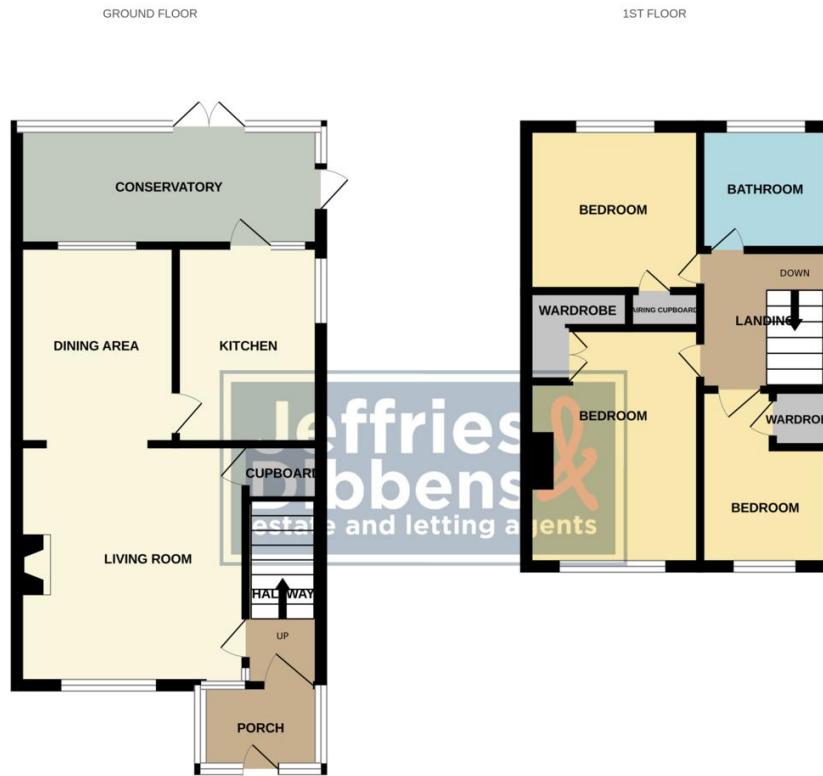
**BEDROOM 2** 9' 3" x 9' 2" (2.82m x 2.79m)

**BEDROOM 3** 10' 03" x 6' 9" (3.12m x 2.06m)

**BATHROOM** 6' 03" x 6' 2" (1.91m x 1.88m)

**GARAGE** 15' 10" x 8' 8" (4.83m x 2.64m)

**REAR GARDEN**



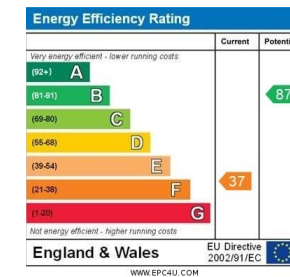
Whilst every attempt has been made to ensure the accuracy of the floorplan contained herein, measurements of doors, windows, rooms and any other items are approximate and no responsibility is taken for any error, omission or mis-statement. This plan is for illustrative purposes only and should be used as such by any prospective purchaser. The services, systems and appliances shown have not been tested and no guarantee as to their operability or efficiency can be given.  
Made with Metropix (C)2025

**LOCAL AUTHORITY**  
Fareham Borough Council

**TENURE**  
Freehold

**COUNCIL TAX BAND**  
Band C

**VIEWINGS**  
By prior appointment only



Agents Note: Whilst every care has been taken to prepare these particulars, they are for guidance purposes only. All measurements are approximate and are for general guidance purposes only and whilst every care has been taken to ensure their accuracy, they should not be relied upon and potential buyers/tenants are advised to recheck the measurements

**Jeffries  
Dibbens**  
estate and letting agents

**OFFICE ADDRESS**  
78 West Street, Portchester,  
Fareham, PO16 9UN

**CONTACT**  
023 9243 5000  
portchester@jeffries.co.uk  
www.jdea.co.uk