

£275,000
17 Waltham Close
Portchester, PO16 8EQ

PROPERTY SUMMARY

This well-presented two-bedroom mid-terrace home is located on the popular Portchester Hillslopes within close proximity to Portchester and the Train Station. The accommodation boasts a spacious living/dining room, a fitted kitchen, a bathroom and two double bedrooms. Other benefits include a staggered landscaped garden with rear access, views over the Solent from the front of the property and gas central heating. Please call our Portchester Office to arrange a viewing!





PORCH 4' 05" x 3' 02" (1.35m x 0.97m)

LOUNGE/DINER 18' 8" x 12' 5" (5.69m x 3.78m)

KITCHEN 12' 5" x 8' 2" (3.78m x 2.49m)

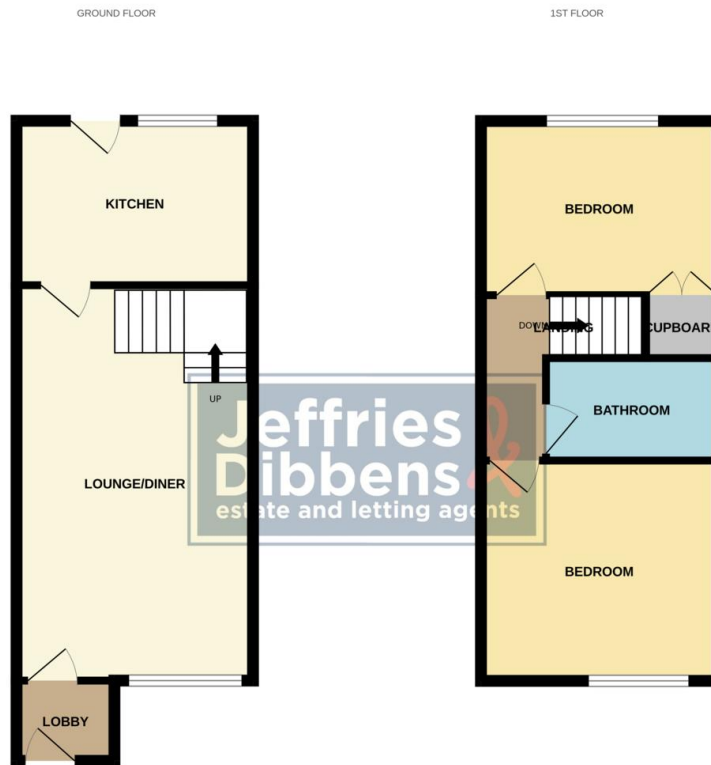
LANDING

BEDROOM 12' 6" x 10' 3" (3.81m x 3.12m)

BEDROOM 12' 6" x 8' 2" (3.81m x 2.49m)

BATHROOM 8' 10" x 4' 11" (2.69m x 1.5m)

REAR GARDEN



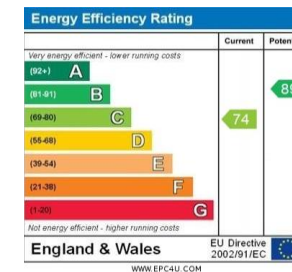
Whilst every attempt has been made to ensure the accuracy of the floorplan contained herein, measurements of doors, windows, rooms and any other items are approximate and no responsibility is taken for any error, omission or misstatement. This plan is for illustrative purposes only and should be used as such for any prospective purchaser. The services, systems and appliances shown have not been tested and no guarantee as to their operability or efficiency can be given.
Made with Metropix 02025

LOCAL AUTHORITY
Fareham Borough Council

TENURE
Freehold

COUNCIL TAX BAND
Band B

VIEWINGS
By prior appointment only



Agents Note: Whilst every care has been taken to prepare these particulars, they are for guidance purposes only. All measurements are approximate and are for general guidance purposes only and whilst every care has been taken to ensure their accuracy, they should not be relied upon and potential buyers/tenants are advised to recheck the measurements

Jeffries & Dibbens
estate and letting agents

OFFICE ADDRESS
78 West Street, Portchester,
Fareham, PO16 9UN

CONTACT
023 9243 5000
portchester@jeffries.co.uk
www.jdea.co.uk