



£385,000
6 Seaway Grove
Portchester, PO16 9HZ

PROPERTY SUMMARY

We're pleased to present to the market this well presented semi detached bungalow located on Seaway Grove, Portchester, only a short walk to the shoreline. The property consists of three good size bedrooms, a modern fitted shower room, a spacious 22' lounge/diner, a kitchen and a conservatory. A particular selling point of the property is the low maintenance rear garden with a large Summer House with power and lighting located at the back of the garden. Other benefits include off road parking and gas central heating. To arrange your viewing contact our Portchester Office today!





FRONT Off road parking, side access to rear garden.

HALLWAY

BEDROOM ONE 12' 05 into bay" x 10' 04" (3.78m x 3.15m)

BEDROOM TWO 9' 04" x 8' 04" (2.84m x 2.54m)

BEDROOM THREE 11' 10" x 6' 10" (3.61m x 2.08m)

SHOWER ROOM

LOUNGE/DINER 22' 05" x 10' 04" (6.83m x 3.15m)

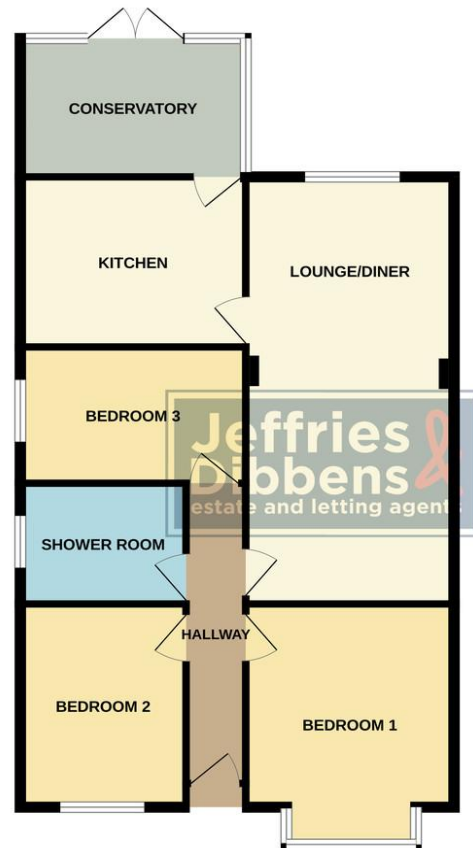
KITCHEN 9' 11" x 9' 07" (3.02m x 2.92m)

CONSERVATORY 9' 01" x 7' 09" (2.77m x 2.36m)

REAR GARDEN

SUMMER HOUSE 18' 10" x 15' 05" (5.74m x 4.7m) Power & Lighting.

GROUND FLOOR



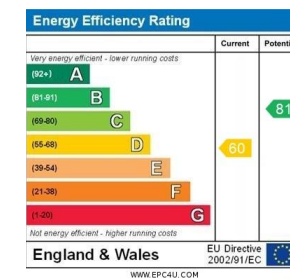
Whilst every attempt has been made to ensure the accuracy of the floorplan contained here, measurements of doors, windows, rooms and any other items are approximate and no responsibility is taken for any error, omission or mis-statement. This plan is for illustrative purposes only and should be used as such by any prospective purchaser. The services, systems and appliances shown have not been tested and no guarantee as to their operability or efficiency can be given.
Made with Metropix ©2024

LOCAL AUTHORITY
Fareham Borough Council

TENURE
Freehold

COUNCIL TAX BAND
Band C

VIEWINGS
By prior appointment only



Agents Note: Whilst every care has been taken to prepare these particulars, they are for guidance purposes only. All measurements are approximate and are for general guidance purposes only and whilst every care has been taken to ensure their accuracy, they should not be relied upon and potential buyers/tenants are advised to recheck the measurements

**Jeffries
Dibbens**
estate and letting agents

OFFICE ADDRESS
78 West Street, Portchester,
Fareham, PO16 9UN

CONTACT
023 9243 5000
portchester@jeffries.co.uk
www.jdea.co.uk