

GUIDE PRICE

£200,000-£215,000

1 Desborough Close

Paulsgrove, PO6 4DS

PROPERTY SUMMARY

We are pleased to present to the market this three bedroom Non Standard Construction end terrace family home located in Desborough Close, Paulsgrove. The accommodation boasts an entrance hall, a living room with a fireplace, a kitchen/dining room with access to the south facing garden as well as three good size bedrooms and a modernised bathroom on to the first floor. Externally, the rear garden includes a patio area, a large storage shed and side access to the front of the property. Please contact our Portchester Office to arrange a viewing!





FRONT

LIVING ROOM 13' 10" x 12' 01" (4.22m x 3.68m)

KITCHEN/DINER 20' 11" x 8' 06" (6.38m x 2.59m)

LANDING

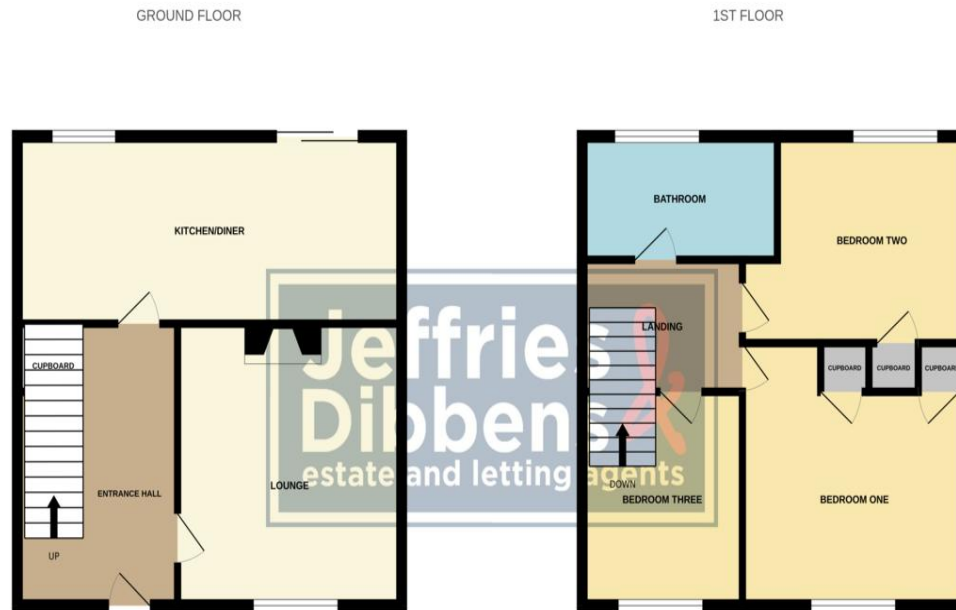
BEDROOM 1 12' 0" x 12' 01" (3.66m x 3.68m)

BEDROOM 2 10' 07" x 8' 07" (3.23m x 2.62m)

BEDROOM 3 8' 10" x 8' 08" (2.69m x 2.64m)

BATHROOM

REAR GARDEN



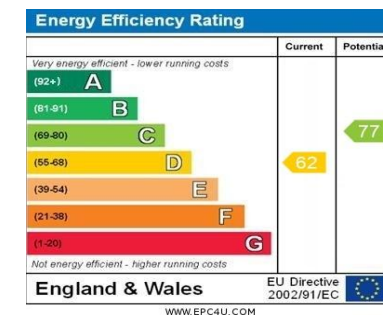
Whilst every attempt has been made to ensure the accuracy of the floorplan contained here, measurements of doors, windows, rooms and any other items are approximate and no responsibility is taken for any error, omission or mis-statement. This plan is for illustrative purposes only and should be used as such by any prospective purchaser. The services, systems and appliances shown have not been tested and no guarantee as to their operability or efficiency can be given.
Made with Metropix ©2024

LOCAL AUTHORITY
Portsmouth City Council

TENURE
Freehold

COUNCIL TAX BAND
Band A

VIEWINGS
By prior appointment only



Agents Note: Whilst every care has been taken to prepare these particulars, they are for guidance purposes only. All measurements are approximate and are for general guidance purposes only and whilst every care has been taken to ensure their accuracy, they should not be relied upon and potential buyers/tenants are advised to recheck the measurements

**Jeffries
Dibbens**
estate and letting agents

OFFICE ADDRESS
78 West Street, Portchester,
Fareham, PO16 9UN

CONTACT
023 9243 5000
portchester@jeffries.co.uk
www.jdea.co.uk