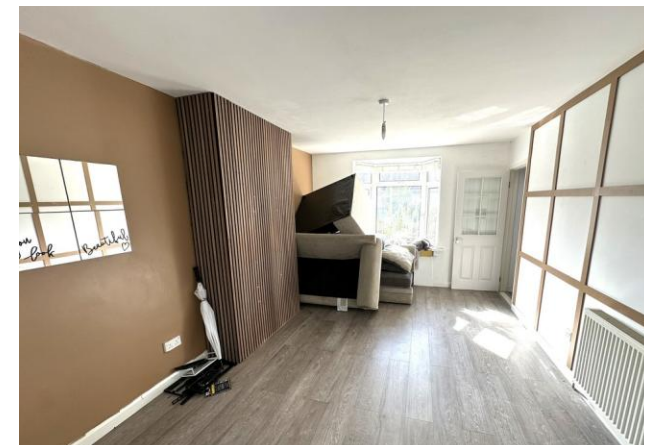




£240,000
19 Stratton Close
Paulsgrove, PO6 3QE

PROPERTY SUMMARY

Situated close to local transport links and nicely situated within a cul-de-sac is this cottage style end terrace home. Formerly a Military personnel home this property provides good accommodation throughout. The ground floor provides a spacious lounge, kitchen, bathroom (partial refitting required) conservatory and utility space, whilst the first floor provides two bedrooms both with access to the four piece Jack and Jill en suite. The outside provides a rear garden with office/garden room and on street bay parking (non-allocated). No onward chain.





HALL

LOUNGE 14' 10" x 11' 0" (4.52m x 3.35m)

BATHROOM

KITCHEN 11' 8" x 8' 8" (3.56m x 2.64m)

CONSERVATORY 14' 3" x 6' 9" (4.34m x 2.06m)

UTILITY ROOM 6' 9" x 6' 4" (2.06m x 1.93m)

LANDING

BEDROOM 15' 0" x 12' 0" (4.57m x 3.66m)

BEDROOM 8' 9" x 8' 8" (2.67m x 2.64m)

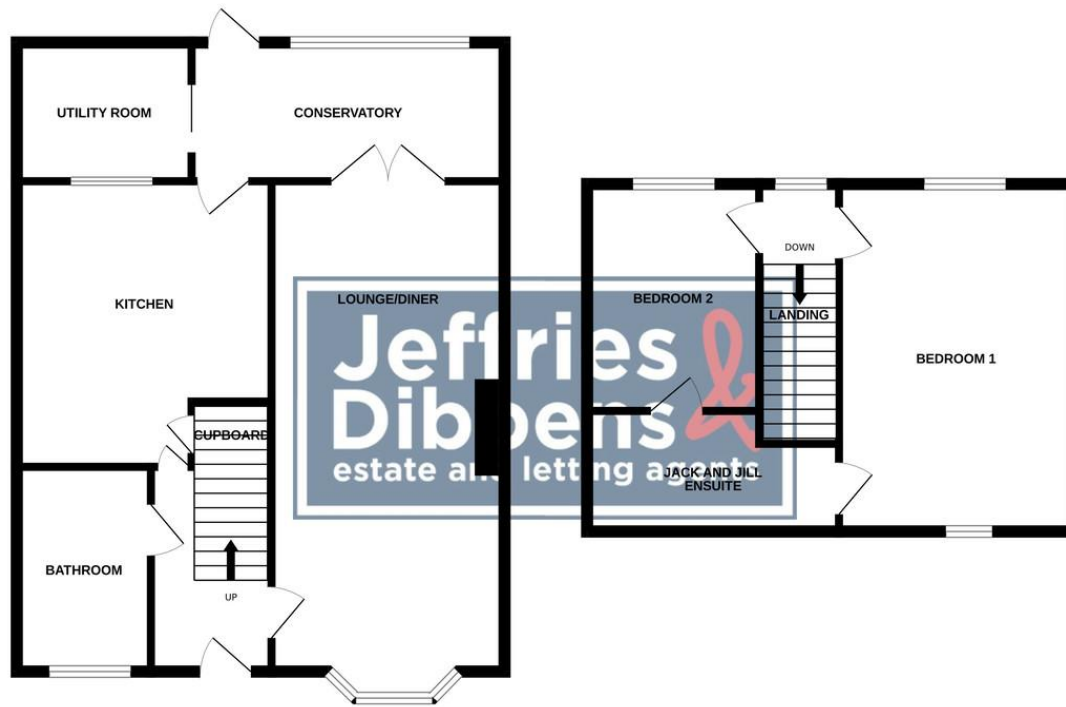
JACK AND JILL EN SUITE

REAR GARDEN

GYM/OFFICE/BAR SPACE

GROUND FLOOR

1ST FLOOR



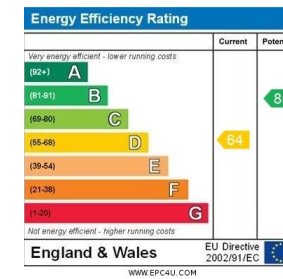
Whilst every attempt has been made to ensure the accuracy of the floorplan contained here, measurements of doors, windows, rooms and any other items are approximate and no responsibility is taken for any error, omission or mis-statement. This plan is for illustrative purposes only and should be used as such by any prospective purchaser. The services, systems and appliances shown have not been tested and no guarantee as to their operability or efficiency can be given.
Made with Metropix ©2024

LOCAL AUTHORITY
Portsmouth City Council

TENURE
Freehold

COUNCIL TAX BAND
Band A

VIEWINGS
By prior appointment only



Agents Note: Whilst every care has been taken to prepare these particulars, they are for guidance purposes only. All measurements are approximate and are for general guidance purposes only and whilst every care has been taken to ensure their accuracy, they should not be relied upon and potential buyers/tenants are advised to recheck the measurements

**Jeffries
Dibbens &**
estate and letting agents

OFFICE ADDRESS
78 West Street, Portchester,
Fareham, PO16 9UN

CONTACT
023 9243 5000
portchester@jeffries.co.uk
www.jdea.co.uk