



£300,000
Sebastian Grove
Waterlooville, PO7 8LD

PROPERTY SUMMARY

Tucked away in a quiet cul-de-sac in the very popular Tempest area of Waterlooville, we are delighted to offer for sale this 2 bedroom house, which has been modernised throughout by the current owners and is sure to attract immediate interest and internal viewings are highly recommended. The property has a large number of benefits including 2 first floor double bedrooms, modern fitted kitchen, lounge/dining room and modern fitted bathroom suite. Externally there is a garage and a south facing rear garden. To arrange your viewing contact us as sole agents today.

2 

1 

1 





PORCH Inner door to lounge.

LOUNGE/DINER 18' 11" x 12' 5" (5.77m x 3.78m) Window to front aspect, two sets radiators, stairs to first floor landing, door to:

KITCHEN 12' 4" x 8' 0" (3.76m x 2.44m) Window and door to rear aspect, range of wall and base units incorporating sink unit, space for freestanding fridge freezer, integral washing machine, space for range oven with extractor hood over., cupboard housing boiler.

FIRST FLOOR LANDING Doors to:

BEDROOM 1 12' 6" x 10' 6" (3.81m x 3.2m) Window to front aspect, radiator.

BEDROOM 2 12' 5" x 8' 1" (3.78m x 2.46m) Window to rear aspect, radiator, built in storage.

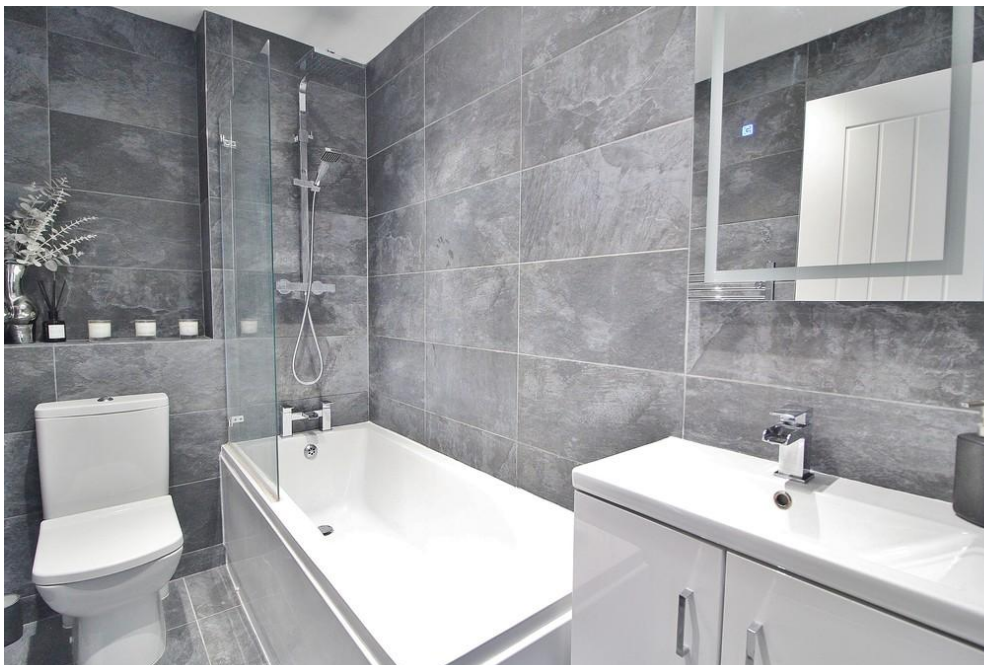
BATHROOM Heated towel rail, panel enclosed bath with shower over, wash hand basin and WC.

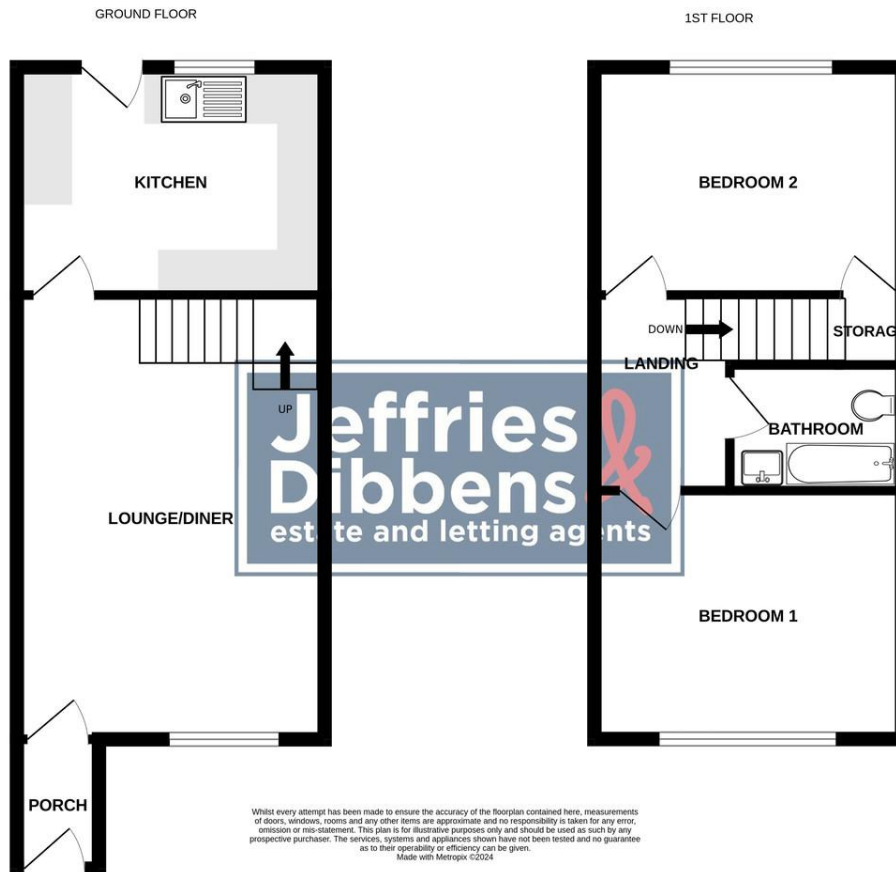
OUTSIDE

REAR GARDEN Laid to lawn with patio area, gated rear access.

FRONT Pathway and steps leading to front door.

GARAGE Located in a block, up and over door.



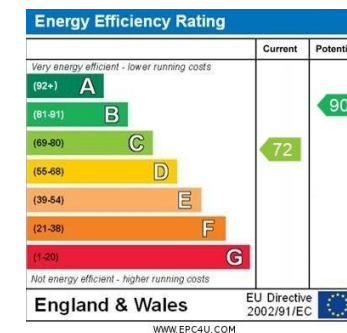


LOCAL AUTHORITY
Havant Borough Council

TENURE
Freehold

COUNCIL TAX BAND
Band B

VIEWINGS
By prior appointment only



Agents Note: Whilst every care has been taken to prepare these particulars, they are for guidance purposes only. All measurements are approximate and are for general guidance purposes only and whilst every care has been taken to ensure their accuracy, they should not be relied upon and potential buyers/tenants are advised to recheck the measurements

**Jeffries
Dibbens &**
estate and letting agents

OFFICE ADDRESS

226 London Road, Waterlooville,
Hampshire, PO7 7HP

CONTACT

023 9223 1100
waterlooville@jeffries.co.uk
www.jdea.co.uk