

**£435,000**  
**23 Southdown Road**  
Drayton, PO6 2ED





We are delighted to welcome to the sales market this three bedroom 1930's style semi-detached family home, situated in the popular hillslope location of Southdown Road, Drayton. The well-presented property is within the catchment for Court lane and Springfield Schools and is a short distance from Cosham High Street, QA Hospital, bus routes, motorways links, recreation grounds and many other local shopping amenities. The accommodation comprises; entrance hall, 15' lounge, modern fitted kitchen, dining room, utility room, WC and conservatory to the ground floor. On the first floor you will find three generous bedrooms and a modern shower room. Additional benefits include a well-established rear garden, garage, off road parking, log burner and a host of character features throughout.

3   
1   
2 





**ENTRANCE HALL** 16' 3" x 7' 9" (4.95m x 2.36m)

**LOUNGE** 15' 9" x 13' 2" (4.8m x 4.01m)

**DINING ROOM** 13' 9" x 11' 3" (4.19m x 3.43m)

**UTILITY ROOM** 10' 1" x 8' 4" (3.07m x 2.54m)

**WC** 3' 3" x 3' 3" (0.99m x 0.99m)

**CONSERVATORY** 12' 2" x 10' 11" (3.71m x 3.33m)

**LANDING**

**BEDROOM ONE** 15' 9" x 13' 2" (4.8m x 4.01m)

**BEDROOM TWO** 14' 0" x 11' 4" (4.27m x 3.45m)

**BEDROOM THREE** 12' 9" x 8' 1" (3.89m x 2.46m)

**SHOWER ROOM** 7' 3" x 5' 7" (2.21m x 1.7m)

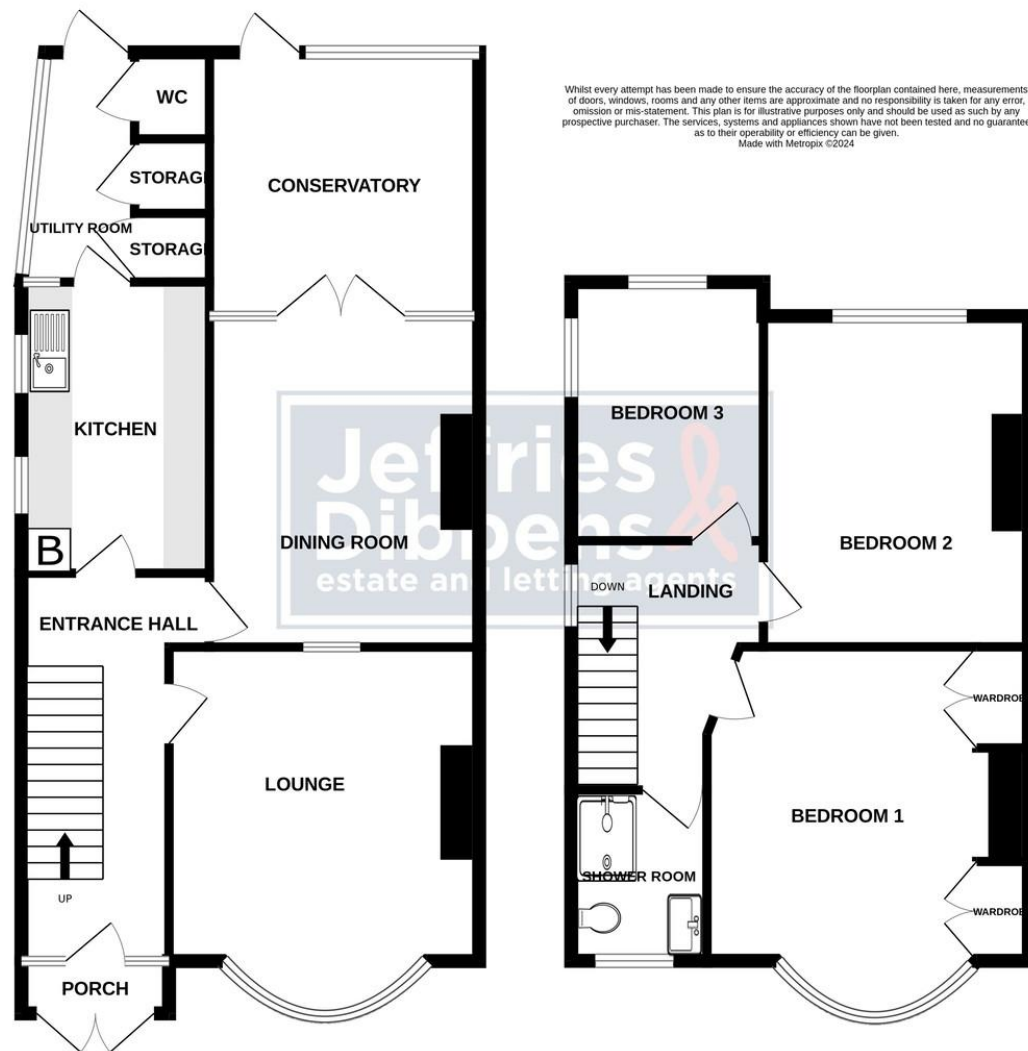
**GARDEN**

**GARAGE** 15' 1" x 8' 4" (4.6m x 2.54m) with power and electric.



GROUND FLOOR

1ST FLOOR

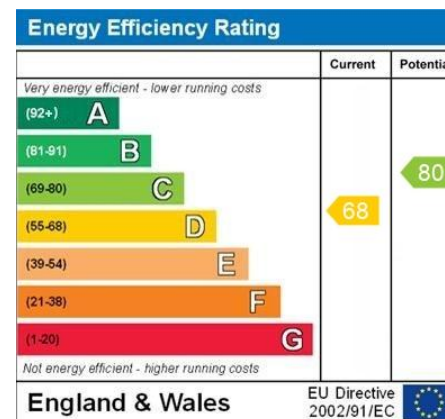


**LOCAL AUTHORITY**  
Portsmouth City Council

**TENURE**  
Freehold

**COUNCIL TAX BAND**  
Band D

**VIEWINGS**  
By prior appointment only



Agents Note: Whilst every care has been taken to prepare these particulars, they are for guidance purposes only. All measurements are approximate and are for general guidance purposes only and whilst every care has been taken to ensure their accuracy, they should not be relied upon and potential buyers/tenants are advised to recheck the measurements

**Jeffries  
Dibbens &**  
estate and letting agents

**OFFICE ADDRESS**

196 Havant Road, Drayton,  
Portsmouth, Hampshire,  
PO6 2EH

**CONTACT**

023 9237 3341  
drayton@jeffries.co.uk  
www.jdea.co.uk