

£315,000

39 Hawthorn Crescent

Portsmouth, PO6 2TH

PROPERTY SUMMARY

Offered with no forward chain and requiring full modernisation, we are delighted to present this three-bedroom end-of-terrace home in Hawthorn Crescent, Highbury. The property features two spacious reception rooms, a kitchen, a shower room, a lean-to, and a downstairs WC. Upstairs, you will find three double bedrooms and a family bathroom. Externally, the home benefits from both front and rear gardens, an outbuilding, and a garage. To arrange a viewing, contact our Drayton Office today!





FRONT Shared driveway to garage, front door to property.

HALLWAY

LOUNGE 17' 7" x 14' 5" (5.36m x 4.39m)

DINING ROOM 15' 2" x 10' 7" (4.62m x 3.23m)

KITCHEN 11' 7" x 6' 6" (3.53m x 1.98m)

REAR LOBBY

SHOWER ROOM

WC

LEAN TO

FIRST FLOOR LANDING

BEDROOM ONE 17' 7" x 14' 6" (5.36m x 4.42m)

BEDROOM TWO 11' 8" x 8' 7" (3.56m x 2.62m)

BEDROOM THREE 12' 0" x 8' 6" (3.66m x 2.59m)

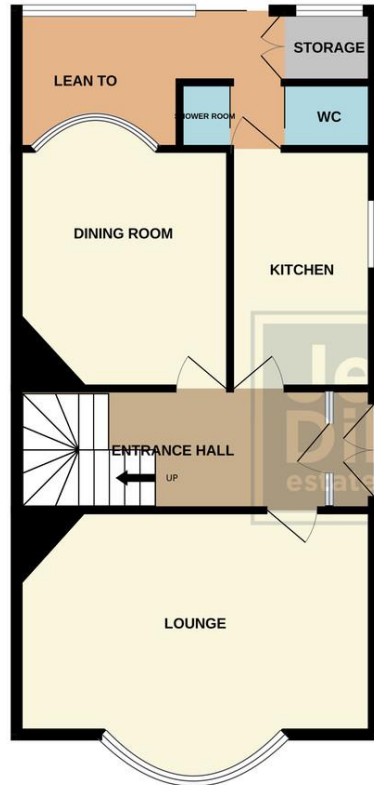
BATHROOM

REAR GARDEN

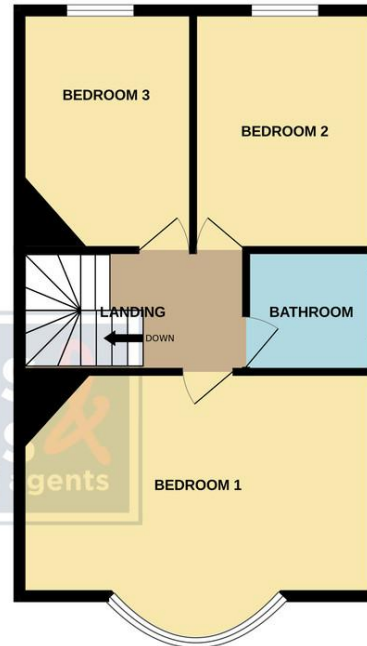
OUTBUILDING

GARAGE

GROUND FLOOR



1ST FLOOR



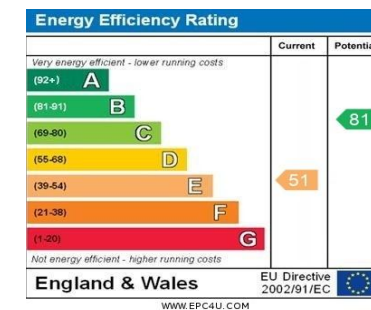
Whilst every attempt has been made to ensure the accuracy of the floorplan contained here, measurements of doors, windows, rooms and any other items are approximate and no responsibility is taken for any error, omission or mis-statement. This plan is for illustrative purposes only and should be used as such by any prospective purchaser. The services, systems and appliances shown have not been tested and no guarantee as to their operability or efficiency can be given.
Made with Metropix ©2025

LOCAL AUTHORITY
Portsmouth City Council

TENURE
Freehold

COUNCIL TAX BAND
Band C

VIEWINGS
By prior appointment only



Agents Note: Whilst every care has been taken to prepare these particulars, they are for guidance purposes only. All measurements are approximate and are for general guidance purposes only and whilst every care has been taken to ensure their accuracy, they should not be relied upon and potential buyers/tenants are advised to recheck the measurements

**Jeffries
Dibbens &**
estate and letting agents

OFFICE ADDRESS

196 Havant Road, Drayton,
Portsmouth, Hampshire, PO6
2EH

CONTACT

023 9237 3341
drayton@jeffries.co.uk
www.jdea.co.uk