

£300,000

357 Chatsworth Avenue

Cosham, PO6 2UW

PROPERTY SUMMARY

Offered with NO FORWARD CHAIN, we're pleased to present to the market this three bedroom terraced house situated in the popular residential location of Chatsworth Avenue. The property consists of a hallway, two reception rooms, a kitchen and a conservatory, ascending the stairs to the first floor you will find three bedrooms and a shower room. Externally there is a good size rear garden and access to a garage as well as off road parking located to the front of the property. To arrange your viewing contact our Drayton Office today!

3 

1 

2 





FRONT Off road parking.

PORCH

HALLWAY

LOUNGE 15' 7" x 11' 0" (4.75m x 3.35m)

DINING ROOM 14' 4" x 12' 5" (4.37m x 3.78m)

KITCHEN 15' 1" x 9' 6" (4.6m x 2.9m)

CONSERVATORY 6' 1" x 6' 0" (1.85m x 1.83m)

LANDING

BEDROOM ONE 12' 6" x 11' 5" (3.81m x 3.48m)

BEDROOM TWO 13' 0" x 9' 5" (3.96m x 2.87m)

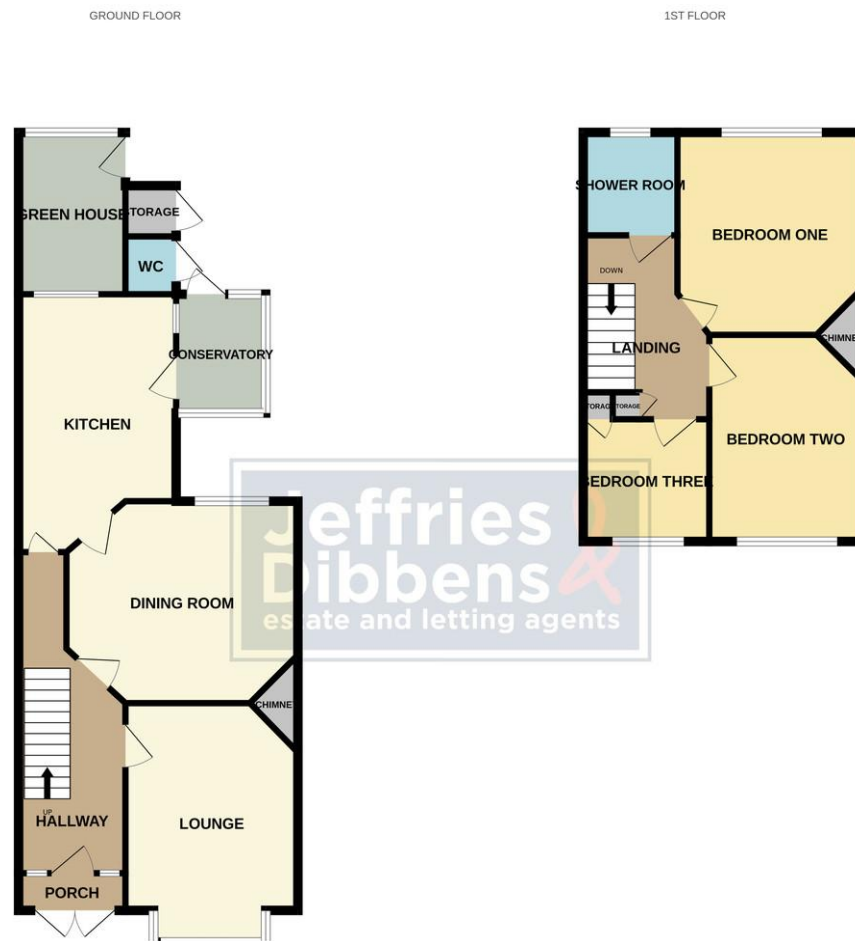
BEDROOM THREE 7' 9" x 7' 7" (2.36m x 2.31m)

SHOWER ROOM

REAR GARDEN

GARAGE 17' 6" x 9' 0" (5.33m x 2.74m)





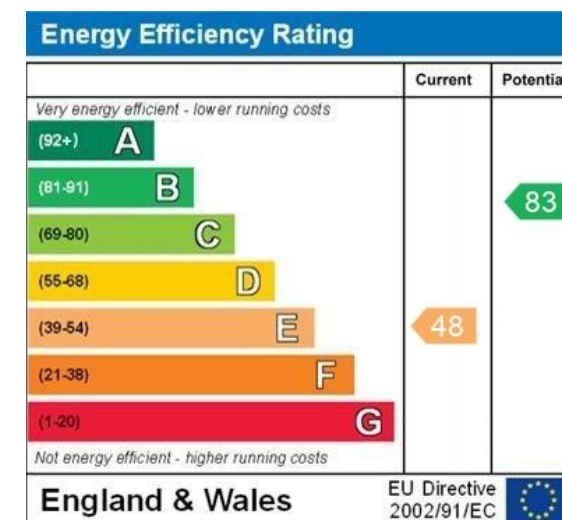
Whilst every attempt has been made to ensure the accuracy of the floorplan contained here, measurements of doors, windows, rooms and any other items are approximate and no responsibility is taken for any error, omission or mis-statement. This plan is for illustrative purposes only and should be used as such by any prospective purchaser. The services, systems and appliances shown have not been tested and no guarantee as to their operability or efficiency can be given.
Made with Metropix 6/2025

LOCAL AUTHORITY
Portsmouth City Council

TENURE
Freehold

COUNCIL TAX BAND
Band C

VIEWINGS
By prior appointment only



**Jeffries
Dibbens &**
estate and letting agents

OFFICE ADDRESS
196 Havant Road, Drayton,
Portsmouth, Hampshire,
PO6 2EH

CONTACT
023 9237 3341
drayton@jeffries.co.uk
www.jdea.co.uk

Agents Note: Whilst every care has been taken to prepare these particulars, they are for guidance purposes only. All measurements are approximate and are for general guidance purposes only and whilst every care has been taken to ensure their accuracy, they should not be relied upon and potential buyers/tenants are advised to recheck the measurements