

GUIDE PRICE

£475,000 - £485,000

3 Parlour Way

Portsmouth, PO6 1DY

PROPERTY SUMMARY

Situated on a newly built development in central Drayton you will find this spacious four bedroom detached house. The property consists of a lounge, a spacious kitchen/diner and a down stairs WC. To the first floor you will find the family bathroom and four good size bedrooms the master bedroom boasting ensuite facilities. Externally there is a west facing rear garden with access to the garage and side access to the driveway which provides off road parking for multiple vehicles. To arrange your viewing contact our Drayton Office today!





FRONT Driveway to the side of the property leading to the garage.

HALLWAY

WC

LOUNGE 19' 11" x 10' 9" (6.07m x 3.28m)

KITCHEN/DINER 18' 3" x 13' 5" (5.56m x 4.09m)

LANDING

BEDROOM ONE 10' 10" x 10' 8" (3.3m x 3.25m)

ENSUITE

BEDROOM TWO 12' 5" x 9' 1" (3.78m x 2.77m)

BEDROOM THREE 11' 2" x 7' 0" (3.4m x 2.13m)

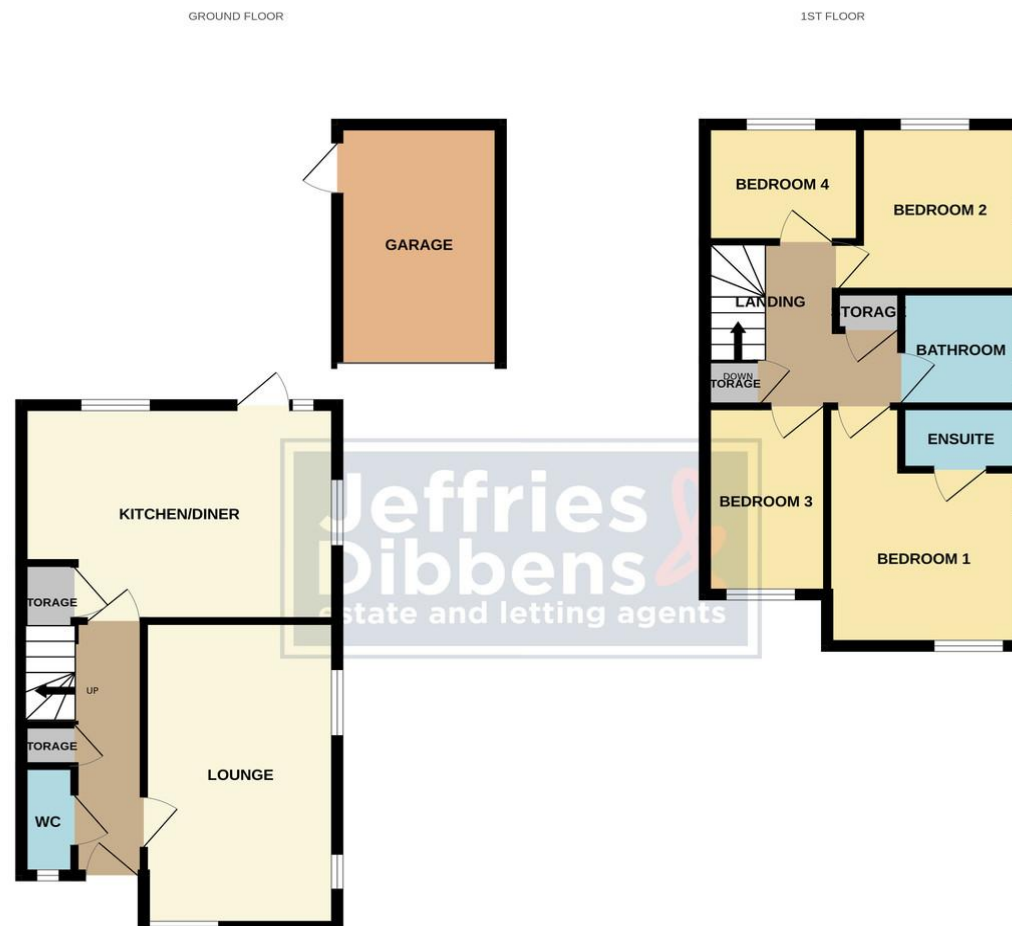
BEDROOM FOUR 8' 10" x 8' 9" (2.69m x 2.67m)

BATHROOM

REAR GARDEN

GARAGE

Please note that we have been made aware that there is a estate charge of £250.00 per annum.



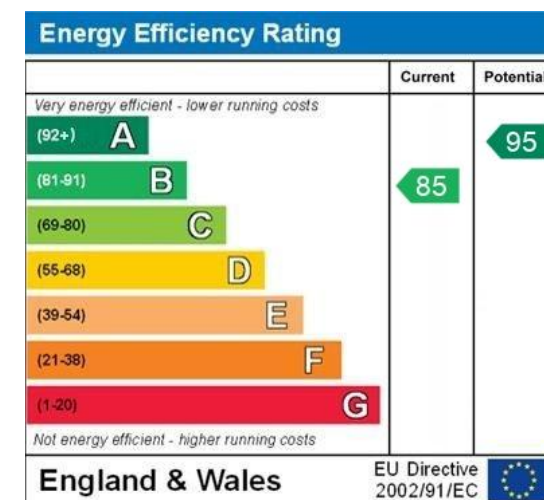
Whilst every attempt has been made to ensure the accuracy of the floorplan contained here, measurements of doors, windows, rooms and any other items are approximate and no responsibility is taken for any error, omission or mis-statement. This plan is for illustrative purposes only and should be used as such by any prospective purchaser. The services, systems and appliances shown have not been tested and no guarantee as to their operability or efficiency can be given.
Made with Metropix ©2025

LOCAL AUTHORITY
Portsmouth City Council

TENURE
Freehold

COUNCIL TAX BAND
Band E

VIEWINGS
By prior appointment only



**Jeffries
Dibbensen**
estate and letting agents

OFFICE ADDRESS
196 Havant Road, Drayton,
Portsmouth, Hampshire,
PO6 2EH

CONTACT
023 9237 3341
drayton@jeffries.co.uk
www.jdea.co.uk

Agents Note: Whilst every care has been taken to prepare these particulars, they are for guidance purposes only. All measurements are approximate and are for general guidance purposes only and whilst every care has been taken to ensure their accuracy, they should not be relied upon and potential buyers/tenants are advised to recheck the measurements