

OFFERS IN EXCESS OF

£725,000

207 Havant Road

Drayton, PO6 1DA

We are delighted to welcome to the market this deceptively large five bedroom detached family home in the sought after location of Havant Road, Drayton. Situated in the heart of Drayton it is within the catchment for both Solent and Springfield Schools and easy access of local shopping amenities, bus routes and road links. The spacious property is set over two floors and has 2488 sq ft of living space comprising; entrance hall, three reception rooms, bedroom five / reception room, cloakroom, utility room and open plan kitchen / breakfast room on the ground floor. On the first floor you will find a modern bathroom suite and four bedrooms with bedroom one benefitting from a walk-in wardrobe and bedroom two offering en-suite facilities. Additional benefits to the property include off road parking for multiple cars, landscaped terraced rear garden with an impressive detached summer house / outbuilding, further hardstand to the rear, double glazing and gas central heating.

5 

2 

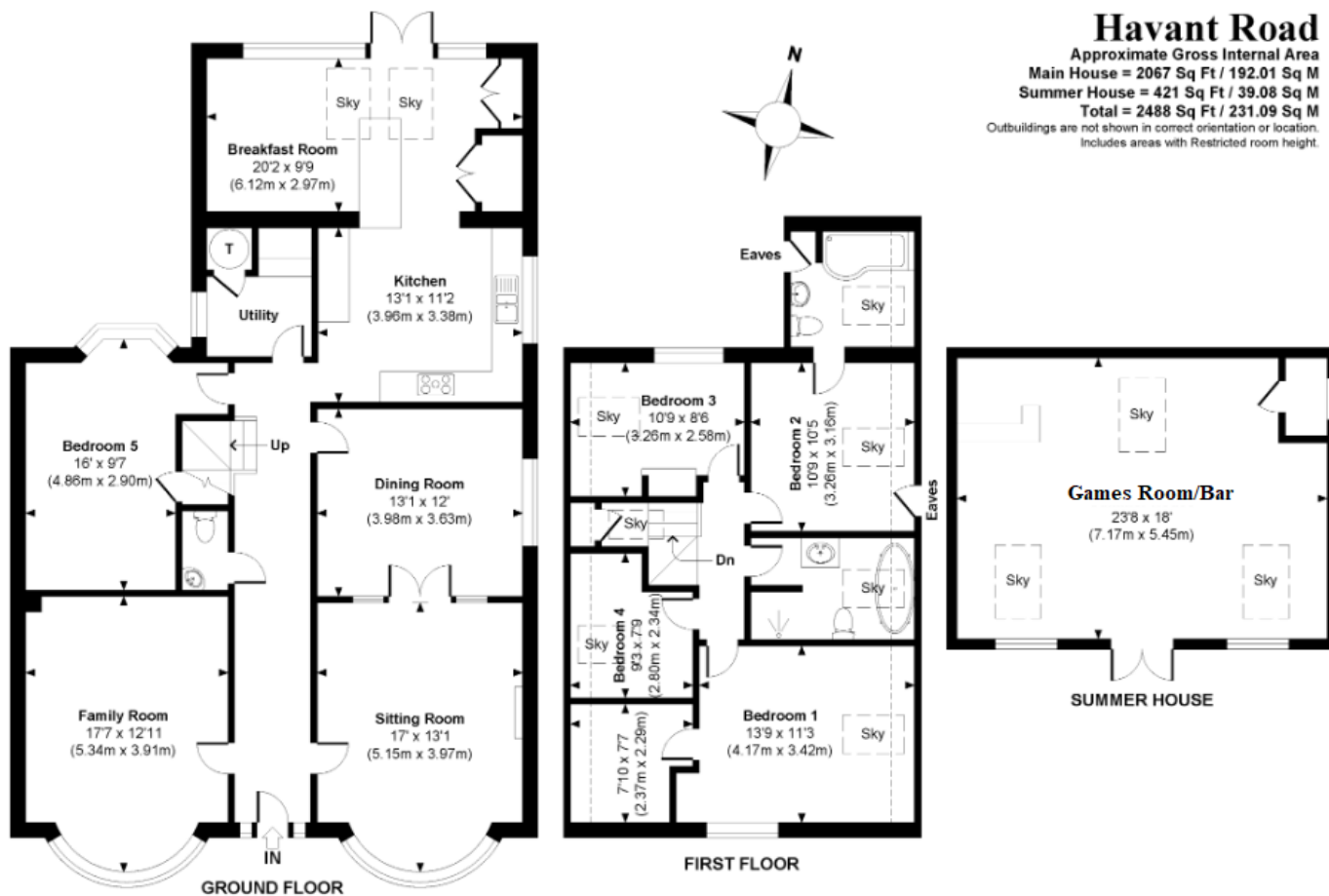
2 











LOCAL AUTHORITY
 Portsmouth City Council

TENURE
 Freehold

COUNCIL TAX BAND
 Band F

VIEWINGS
 By prior appointment only

Score	Energy rating	Current	Potential
92+	A		
81-91	B		
69-80	C		78 C
55-68	D	66 D	
39-54	E		
21-38	F		
1-20	G		

**Jeffries
Dibbens &**
 estate and letting agents

OFFICE ADDRESS
 196 Havant Road, Drayton,
 Portsmouth, Hampshire, PO6
 2EH

CONTACT
 023 9237 3341
 drayton@jeffries.co.uk
 www.jdea.co.uk

Agents Note: Whilst every care has been taken to prepare these particulars, they are for guidance purposes only. All measurements are approximate and are for general guidance purposes only and whilst every care has been taken to ensure their accuracy, they should not be relied upon and potential buyers/tenants are advised to recheck the measurements