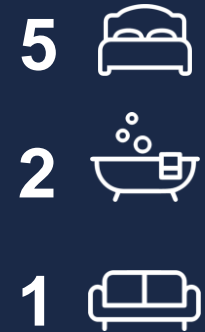


£390,000

6 Acorn Close

Farlington, PO6 1AU

Positioned in the quiet cul de sac location of Acorn Close, Farlington you will find this spacious five bedroom extended family home. The property has been enhanced by the current owners to now offer ample accommodation over three floors including; a modern kitchen/diner, a family living area, a snug, a utility room and a downstairs shower room all to the ground floor. Ascending the stairs to the first floor you will find the first three bedrooms and family bathroom with a further two bedrooms located to the second floor. Externally you will find a low maintenance rear garden and off road parking located to the front of the property. Acorn Close also has the added benefit of falling within the Solent and Springfield School Catchments. To arrange your viewing contact our Drayton Office today!





ENTRANCE HALL

SHOWER ROOM 11' 10" x 2' 8" (3.61m x 0.81m)

UTILITY ROOM 7' 9" x 5' 7" (2.36m x 1.7m)

OFFICE/SNUG 11' 8" x 7' 6" (3.56m x 2.29m)

KITCHEN/DINER 15' 7" x 11' 11" (4.75m x 3.63m)

FAMILY ROOM 15' 2" x 7' 11" (4.62m x 2.41m)

FIRST FLOOR LANDING

BATHROOM 8' 11" x 5' 2" (2.72m x 1.57m)

BEDROOM 11' 11" x 10' 1" (3.63m x 3.07m)

BEDROOM 12' 3" x 8' 6" (3.73m x 2.59m)

BEDROOM 11' 9" x 6' 5" (3.58m x 1.96m)

SECOND FLOOR LANDING

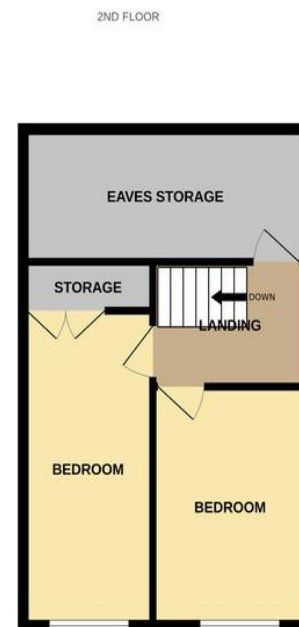
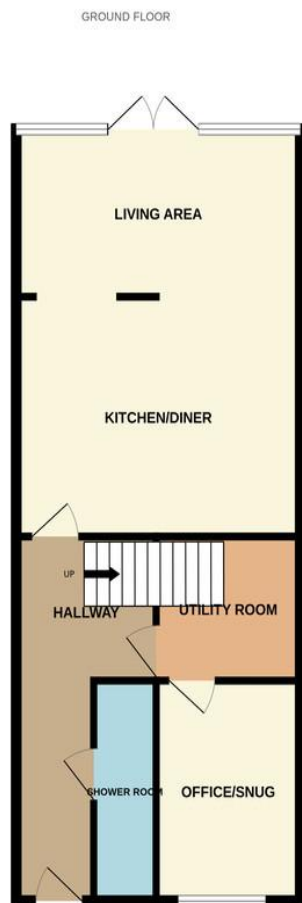
BEDROOM 14' 3" x 6' 7" (4.34m x 2.01m)

BEDROOM 11' 5" x 8' 8" (3.48m x 2.64m)

EAVES STORAGE 0m

OUTSIDE

REAR GARDEN

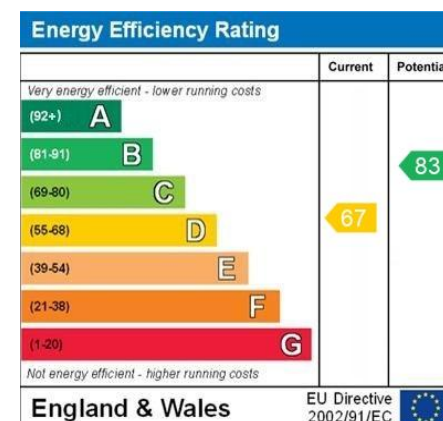


LOCAL AUTHORITY
Portsmouth City Council

TENURE
Freehold

COUNCIL TAX BAND
Band D

VIEWINGS
By prior appointment only



Agents Note: Whilst every care has been taken to prepare these particulars, they are for guidance purposes only. All measurements are approximate and are for general guidance purposes only and whilst every care has been taken to ensure their accuracy, they should not be relied upon and potential buyers/tenants are advised to recheck the measurements

Whilst every attempt has been made to ensure the accuracy of the floorplan contained here, measurements of doors, windows, rooms and any other items are approximate and no responsibility is taken for any error, omission or mis-statement. This plan is for illustrative purposes only and should be used as such by any prospective purchaser. The services, systems and appliances shown have not been tested and no guarantee as to their operability or efficiency can be given.
Made with Metropix ©2025

**Jeffries
Dibbensen**
estate and letting agents

OFFICE ADDRESS
196 Havant Road, Drayton,
Portsmouth, Hampshire,
PO6 2EH

CONTACT
023 9237 3341
drayton@jeffries.co.uk
www.jdea.co.uk