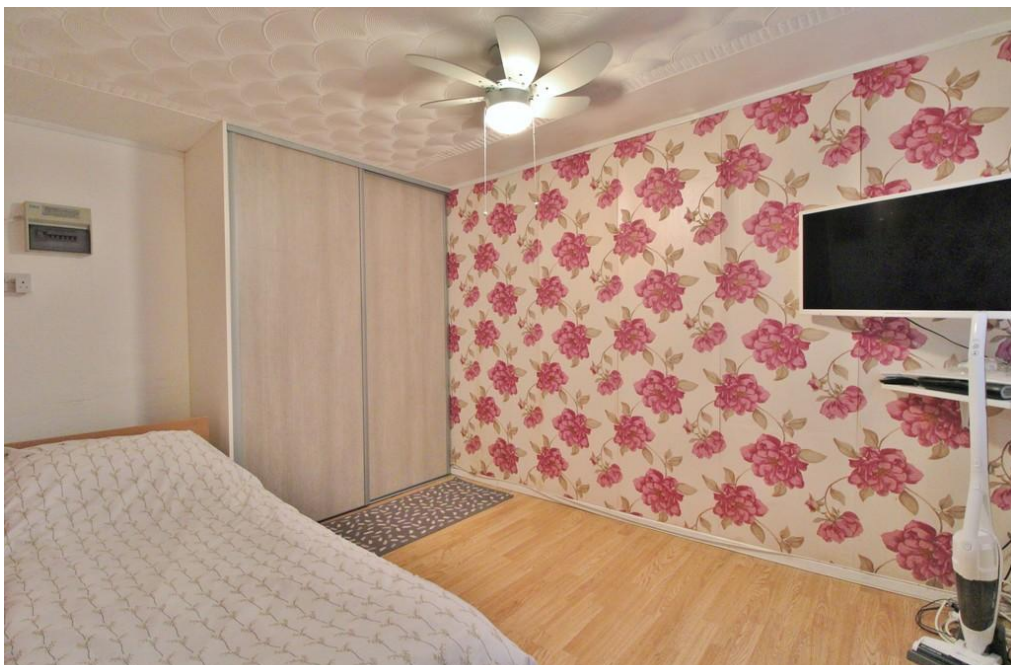


£140,000
48 Cliffdale Gardens
Portsmouth, PO6 3LZ

PROPERTY SUMMARY

NO FORWARD CHAIN! We are delighted to offer for sale this one bedroom residential park home situated in the sought after location of Cliffdale Gardens, Cosham. The property requires some modernisation and is located on popular Portsdown Hill, a short distance from Cosham High street, QA Hospital, bus routes, motorway links and many other local amenities. Other benefits include gas central heating, double glazing, allocated parking and garden area. Viewing is highly recommended and can be arranged via Jeffries and Dibbens (Drayton).





PORCH

BEDROOM 11' 5" x 7' 9" (3.48m x 2.36m)

SHOWER ROOM 6' 5" x 4' 5" (1.96m x 1.35m)

KITCHEN 11' 5" x 7' 7" (3.48m x 2.31m)

LOUNGE 11' 6" x 10' 3" (3.51m x 3.12m)

OUTSIDE

GARDEN

STORAGE

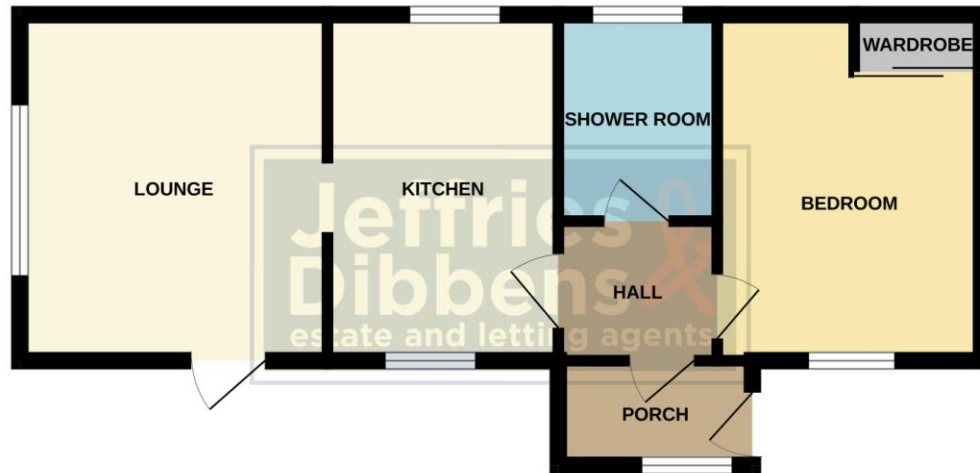
ADDITIONAL INFORMATION

Pitch fee £40.00 (approx) per week, including water rates.

www.portsmouth.gov.uk/services/housing/looking-for-a-home/mobile-home-parks



GROUND FLOOR



Whilst every attempt has been made to ensure the accuracy of the floorplan contained here, measurements of doors, windows, rooms and any other items are approximate and no responsibility is taken for any error, omission or mis-statement. This plan is for illustrative purposes only and should be used as such by any prospective purchaser. The services, systems and appliances shown have not been tested and no guarantee as to their operability or efficiency can be given.
Made with Metropix 62025

LOCAL AUTHORITY
Portsmouth City Council

TENURE
Freehold

COUNCIL TAX BAND
Band A

VIEWINGS
By prior appointment only

Agents Note: Whilst every care has been taken to prepare these particulars, they are for guidance purposes only. All measurements are approximate and are for general guidance purposes only and whilst every care has been taken to ensure their accuracy, they should not be relied upon and potential buyers/tenants are advised to recheck the measurements

**Jeffries
& Dibbens**
estate and letting agents

OFFICE ADDRESS

196 Havant Road, Drayton,
Portsmouth, Hampshire,
PO6 2EH

CONTACT

023 9237 3341
drayton@jeffries.co.uk
www.jdea.co.uk