

£299,999
4 Merz Close
Portsmouth, PO6 2LF

We're pleased to present to the market this three bedroom terrace property located in the central Drayton location of Merz Close on the popular Parkside Estate. The accommodation consists of a lounge, a kitchen/diner and a downstairs WC. To the first floor you will find three bedrooms of which the master boasting en-suite facilities. Externally there is a low maintenance rear garden and allocated parking located opposite the property. The also boasts gas central heating, double glazing and owned solar panels To arrange your viewing contact our Drayton Office today!





PORCH

ENTRANCE HALL

CLOAKROOM

LOUNGE 17' 2" x 12' 1" (5.23m x 3.68m)

KITCHEN/DINER 15' 2" x 9' 2" (4.62m x 2.79m)

FIRST FLOOR LANDING

BEDROOM ONE 12' x 11' 5" (3.66m x 3.48m)

EN-SUITE

BEDROOM TWO 9' 1" x 8' (2.77m x 2.44m)

BEDROOM THREE 8' x 5' 11" (2.44m x 1.8m)

BATHROOM

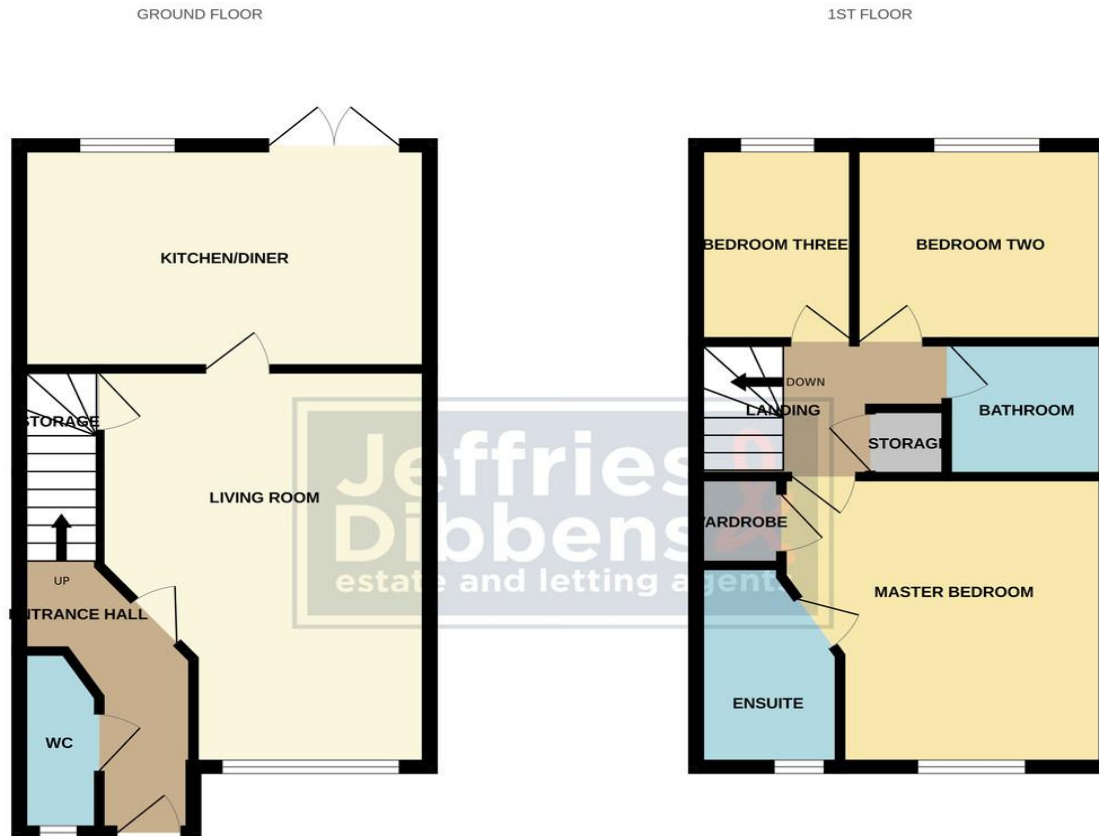
OUTSIDE

REAR GARDEN

OFF ROAD PARKING

AGENTS NOTE: Please be aware that the current vendor is in the process of purchasing the freehold.



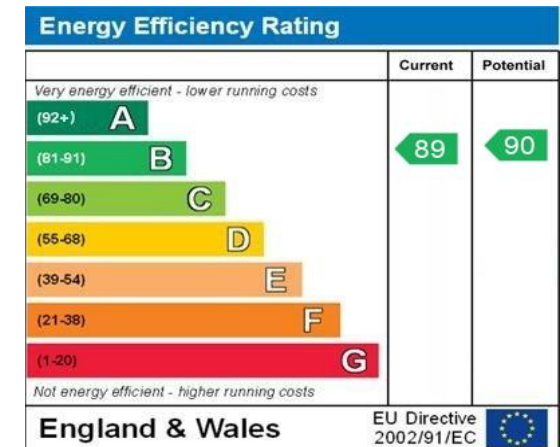


LOCAL AUTHORITY
Portsmouth City Council

TENURE
Leasehold

COUNCIL TAX BAND
Band C

VIEWINGS
By prior appointment only



Agents Note: Whilst every care has been taken to prepare these particulars, they are for guidance purposes only. All measurements are approximate and are for general guidance purposes only and whilst every care has been taken to ensure their accuracy, they should not be relied upon and potential buyers/tenants are advised to recheck the measurements

**Jeffries
Dibbensen**
estate and letting agents

OFFICE ADDRESS
196 Havant Road, Drayton,
Portsmouth, Hampshire,
PO6 2EH

CONTACT
023 9237 3341
drayton@jeffries.co.uk
www.jdea.co.uk