



£515,000
66 South Road
Drayton, PO6 1QD

We are delighted to offer for sale this extended three/four bedroom detached bungalow with off road parking and garage in the popular location of South Road, Drayton. The property is well presented throughout offers versatile accommodation. The ground floor consists of an entrance hall, a 21'11 sitting room, shower room, a 21'11 kitchen/diner, bedroom three and a family room / fourth bedroom. To the first floor, you'll find a further two double bedrooms with access to a four piece bathroom suite. Benefits include off road parking to the front for two / three vehicles, garage and a generous sized west facing rear garden. An internal viewing is highly recommended and can be arranged by contacting Jeffries and Dibbens (Drayton).

- 3 
- 2 
- 2 





ENTRANCE HALL

SITTING ROOM 21' 7" x 11' 1" (6.58m x 3.38m)

KITCHEN/DINER 20' 11" x 9' 6" (6.38m x 2.9m)

FAMILY ROOM / BEDROOM FOUR 15' 1" x 10' 2" (4.6m x 3.1m)

SHOWER ROOM

BEDROOM ONE 15' 1" x 13' 5" (4.6m x 4.09m)

BEDROOM TWO 14' 9" x 11' 9" (4.5m x 3.58m)

BEDROOM THREE 15' 1" x 10' 5" (4.6m x 3.18m)

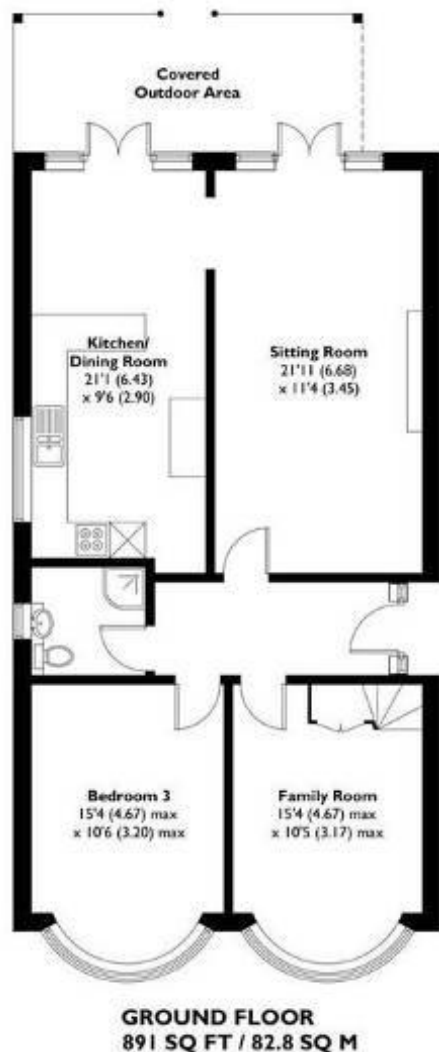
BATHROOM

SUMMER HOUSE 9' 2" x 5' 6" (2.79m x 1.68m)

GARAGE 21' 7" x 11' 1" (6.58m x 3.38m)

PARKING Off road parking for two / three vehicles.



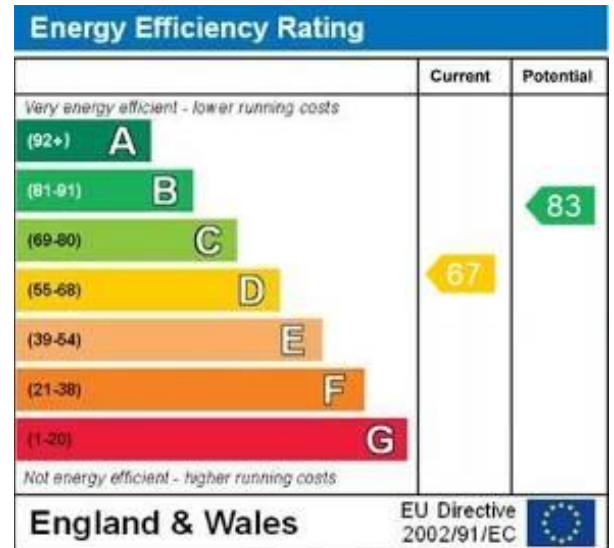


LOCAL AUTHORITY
Portsmouth City Council

TENURE
Freehold

COUNCIL TAX BAND
Band D

VIEWINGS
By prior appointment only



This plan is for layout guidance only. Not drawn to scale unless stated. Windows and door openings are approximate. Whilst every care is taken in the preparation of this plan, please check all dimensions, shapes and compass bearings before making any decisions reliant upon them.

**Jeffries
Dibbens &**
estate and letting agents

OFFICE ADDRESS
196 Havant Road, Drayton,
Portsmouth, Hampshire, PO6
2EH

CONTACT
023 9237 3341
drayton@jeffries.co.uk
www.jdea.co.uk

Agents Note: Whilst every care has been taken to prepare these particulars, they are for guidance purposes only. All measurements are approximate and are for general guidance purposes only and whilst every care has been taken to ensure their accuracy, they should not be relied upon and potential buyers/tenants are advised to recheck the measurements